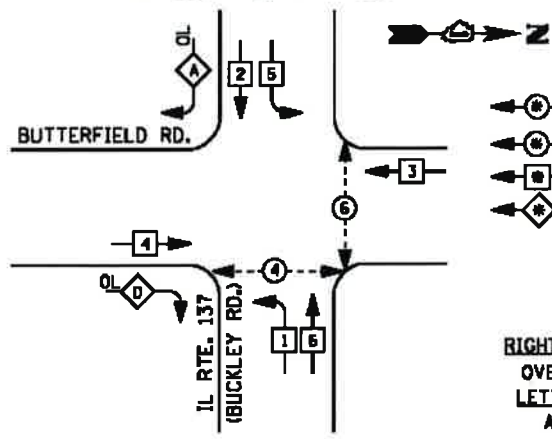


CONTROLLER SEQUENCE



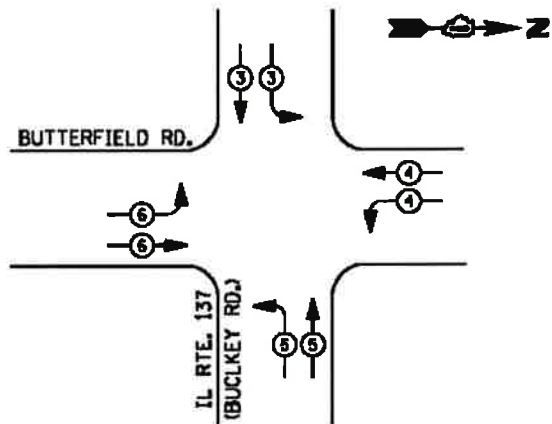
PHASE DESIGNATION DIAGRAM

LEGEND

- DUAL ENTRY PHASE
- PEDESTRIAN PHASE
- SINGLE ENTRY PHASE
- OVERLAP
- NUMBER REFERS TO ASSOCIATED PHASE

RIGHT TURN OVERLAP PHASE DESIGNATION

OVERLAP LETTER	PERMISSIVE PHASE	PROTECTED PHASE
A	= 2	+ 4
D	= 4	+ 1



EMERGENCY VEHICLE PREEMPTION SEQUENCE

EMERGENCY VEHICLE PREEMPTORS				
EMERGENCY VEHICLE PREEMPTOR	3	4	5	6
MOVEMENT				

I. D. Q. T. TRAFFIC SIGNAL INSTALLATION ELECTRICAL SERVICE REQUIREMENTS

TYPE	NO. LAMPS	WATTAGE		% OPERATIONS	TOTAL WATTAGE
		INCAND.	LED		
SIGNAL (RED)	18	135	17	0.50	153
(YELLOW)	18	135	25	0.25	113
(GREEN)	22	135	15	0.25	83
ARROW	8	135	12	0.10	10
PED. SIGNAL	4	90	25	1.00	100
CONTROLLER	1	100	100	1.00	100
ILLUM. SIGN		252	25	0.05	
VIDEO SYSTEM		150	-	1.00	
TOTAL =					559

ENERGY COSTS- BILLED TO: IDOT DISTRICT 1
201 WEST CENTER COURT
SCHALMBURG, IL 60196-1096

ENERGY SUPPLY - CONTACT: TERRI BLECK
PHONE: 847-816-5239
COMMONWEALTH EDISON



RECORD DRAWINGS

Date (MM/DD/YYYY) 04/05/2016
Signed: *Lenny Venezia*
Print(First_Last) Lenny Venezia

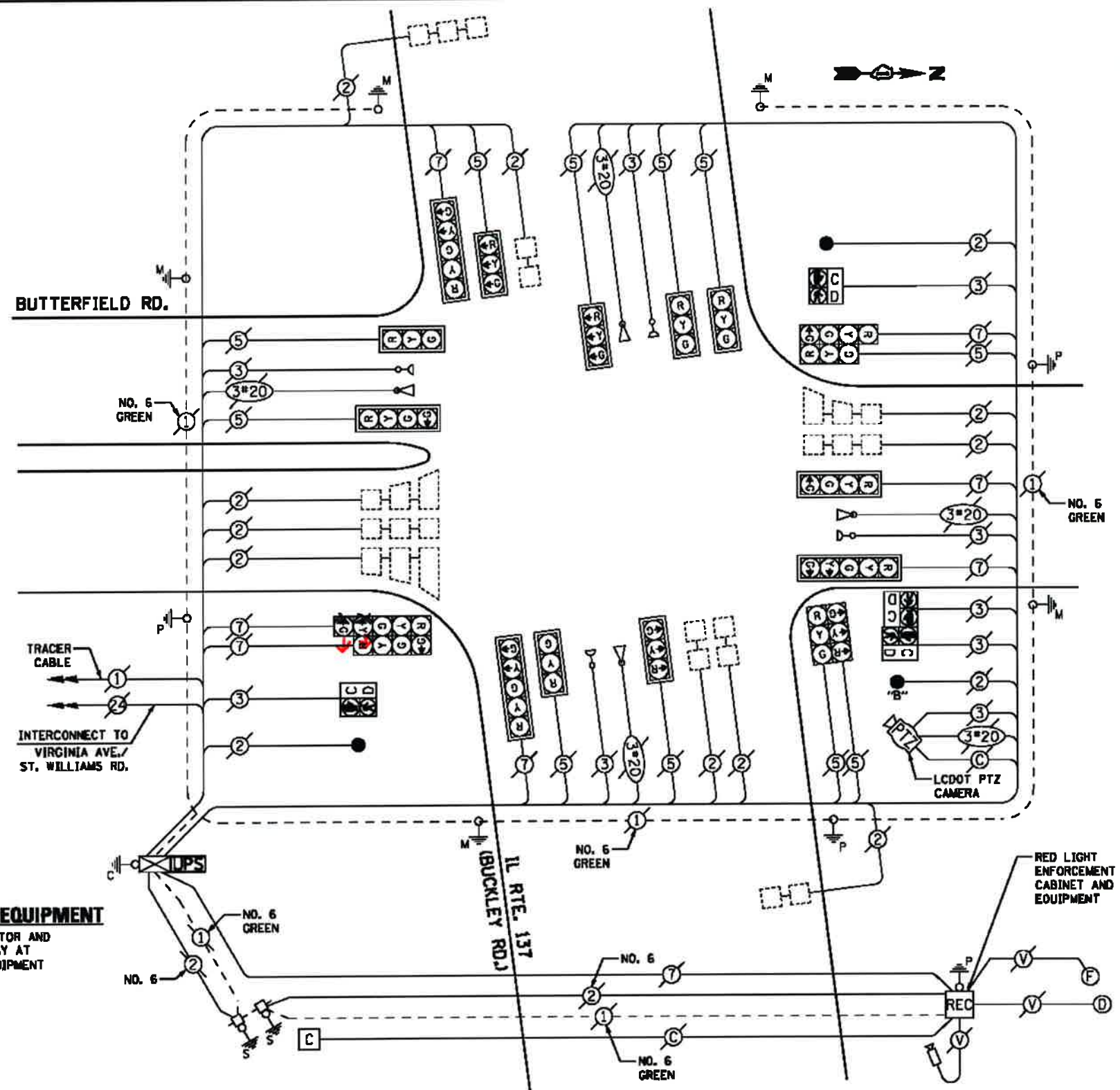
REMOVAL OF EXISTING TRAFFIC SIGNAL EQUIPMENT

THE FOLLOWING ITEMS SHALL BE REMOVED BY THE CONTRACTOR AND SHALL BE DISPOSED OF BY THEM OUTSIDE THE RIGHT-OF-WAY AT THEIR EXPENSE. THE SALVAGE VALUE OF THE REMOVED EQUIPMENT SHALL BE REFLECTED IN THE CONTRACT BID PRICE.

3 EACH PEDESTRIAN PUSH-BUTTON

SCHEDULE OF QUANTITIES

QUANTITY	UNIT	ITEM
1	EACH	MAINTENANCE OF EXISTING TRAFFIC SIGNAL INSTALLATION
1	EACH	MODIFY EXISTING CONTROLLER CABINET
1	EACH	REMOVE EXISTING TRAFFIC SIGNAL EQUIPMENT
1	EACH	UNINTERRUPTIBLE POWER SUPPLY, SPECIAL
3	EACH	PEDESTRIAN PUSH-BUTTON, NON-LATCHING



CABLE PLAN

NOTE: PUSHBUTTON "B" SHALL PLACE A CALL IN PHASES 4 AND 6.

STATE OF ILLINOIS
DEPARTMENT OF TRANSPORTATION

IL ROUTE 137 (BUCKLEY ROAD) AT BUTTERFIELD ROAD
SCHEDULE OF QUANTITIES, CABLE PLAN, PHASE DESIGNATION DIAGRAM,
AND EMERGENCY VEHICLE PREEMPTION SEQUENCE

SECTION	COUNTY	TOTAL SHEETS	SHEET NO.
2014-0907S	LAKE	76	57
CONTRACT NO. 62A42			

TS #7095
LIBERTYVILLE

FILE NAME: I:\Projects\2014\2014-0907S\172-6 IDOT No. 14- Signal\14-822 Version LEPT\Working\Sheet Files\TRF\TRF_CABLE.dgn