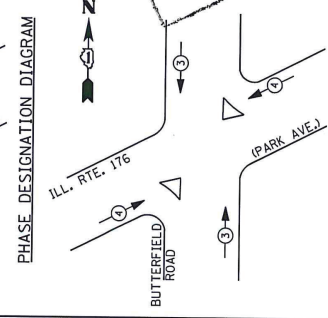


RIGHT TURN OVERLAP PHASE DESIGNATION
 OVERLAP LETTER PHASE PROTECTED PHASE
 B = 4 + + 5
 D = 8 + + 1



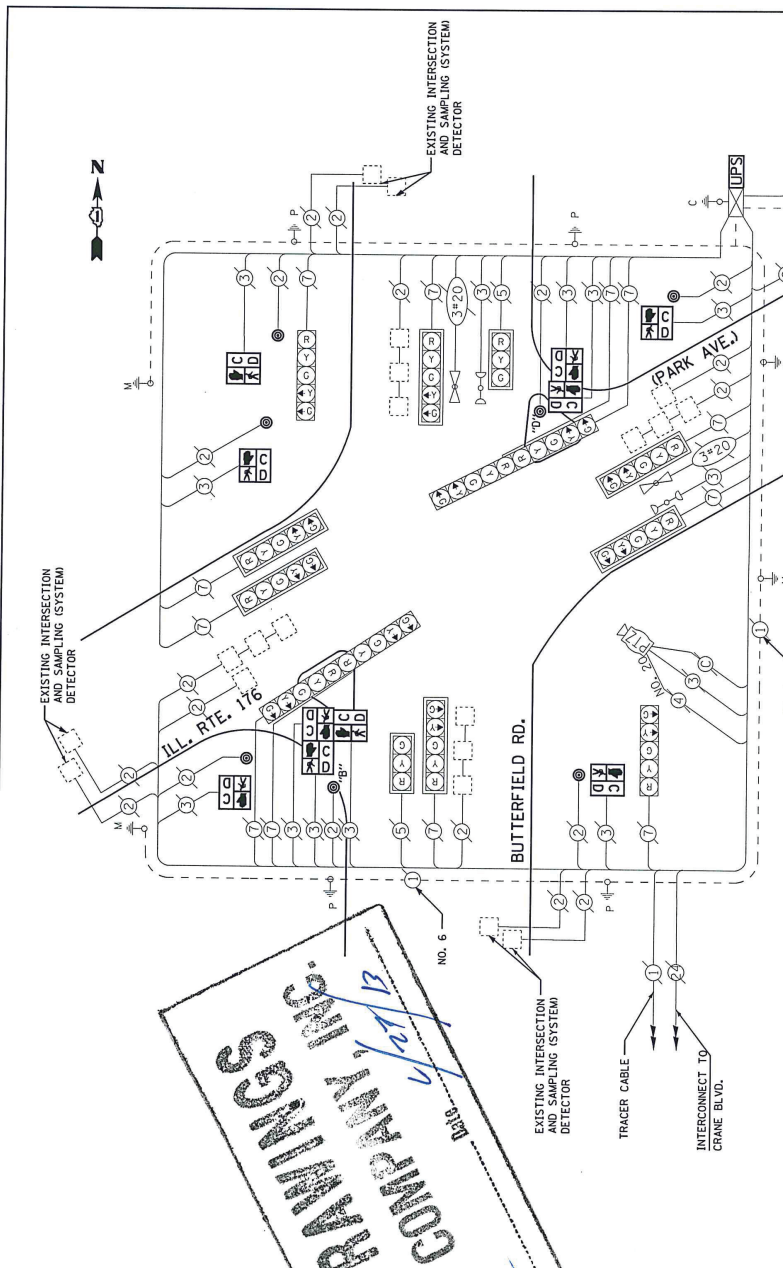
EMERGENCY VEHICLE PREEMPTORS	
EMERGENCY VEHICLE PREEMPTOR	3
MOVEMENT	4

I. D. O. T.
 TRAFFIC SIGNAL INSTALLATION
 ELECTRICAL SERVICE REQUIREMENTS

TYPE	NO. LAMPS	WATTAGE (INCAND.)	% OPERATIONS	TOTAL WATTAGE	
SIGNAL (RED)	14	1,35	17	0.50	119
(YELLOW)	14	1,35	25	0.25	88
(GREEN)	14	1,35	15	0.25	53
ARROW	24	1,35	12	0.10	29
PED. SIGNAL	10	1,00	25	1.00	250
CONTROLLER	1	1,00	100	1.00	100
ILLUM. SIGN	1	252	25	0.05	150
VIDEO SYSTEM	1	150	-	1.00	150
FLASHER LED					789

ENERGY COSTS- BILLED TO: DOT-DISTRICT 1
 ZOI WEST CENTER COURT
 SCHOMBURG, IL 60196-1096
 CONTACT JERRI BLECK
 PHONE 847-846-5239
 COMMONWEALTH EDISON

FILE NAME	DESIGNED	DATE
NS\Projects\112024\04ppg-000\Sheet 1.dwg	DR	
	REVISED	
	REVISED	
	REVISED	
	REVISED	



REMOVAL OF EXISTING TRAFFIC SIGNAL EQUIPMENT
 THE FOLLOWING ITEMS SHALL BE REMOVED BY THE CONTRACTOR AND SHALL BE DISPOSED OF BY THEM OUTSIDE THE RIGHT-OF-WAY AT THEIR EXPENSE. THE SALVAGE VALUE OF THE REMOVED EQUIPMENT SHALL BE REFLECTED IN THE CONTRACT BID PRICE.
 10 EACH PEDESTRIAN SIGNAL HEAD
 7 EACH PEDESTRIAN PUSH-BUTTON

SCHEDULE OF QUANTITIES

QUANTITY	UNIT	ITEM
6	EACH	REMOVAL OF EXISTING TRAFFIC SIGNAL INSTALLATION
1	EACH	PEDESTRIAN SIGNAL HEAD, LED, 2-FACE, BRACKET MOUNTED WITH COUNTDOWN TIMER
1	EACH	PEDESTRIAN SIGNAL HEAD, LED, 3-FACE, BRACKET MOUNTED WITH COUNTDOWN TIMER
1	EACH	MODULAR TRAFFIC SIGNAL HEAD
1	EACH	REMOVE EXISTING TRAFFIC SIGNAL EQUIPMENT
1	EACH	INTERRUPTIBLE POWER SUPPLY, SPECIAL
1	EACH	PEDESTRIAN PUSH-BUTTON, NON-LATCHING

NOTE:
 PUSH BUTTON "B" SHALL PLACE A CALL IN PHASES 4 AND 6
 PUSH BUTTON "D" SHALL PLACE A CALL IN PHASES 2 AND 8.