

**ADDENDUM NO. 1
TO THE
BIDDING DOCUMENTS
FOR
BID NUMBER #24210
WRF IMPROVEMENTS**

PW # 2022.117, 2022.118, 2022.119, 2022.120

**FOR
LAKE COUNTY DEPARTMENT OF PUBLIC WORKS**

DATE: February 8, 2024

TO ALL BIDDERS BIDDING ON THE ABOVE PROJECT:

All Bidders submitting a Bid on the above Contract shall carefully read this Addendum and give it consideration in the preparation of their Bid.

I. The following are revisions to the Specifications:

1. The following revision shall be made to SECTION 01 11 00A – CONTRACT A SUMMARY OF WORK:
 - A. Add the following after Paragraph 1.03.G:

H. Secondary Effluent bypass around Structure 50 will be required for work including but not limited to channel construction shown on 050-S-2 and associated structural removals, and influent valves 50-FCV-5-20 and 50-FCV-5-21. Provide Secondary Effluent bypass around Structure 50 in accordance with Section 01 53 06 – Temporary Bypass Piping Systems.
2. The following revision shall be made to SECTION 01 11 00B – CONTRACT B SUMMARY OF WORK:
 - B. Replace Paragraph 1.03.D.3 in its entirety with the following:
 3. Owner will isolate and drain clarifiers. Owner will clean launders after tanks are drained.

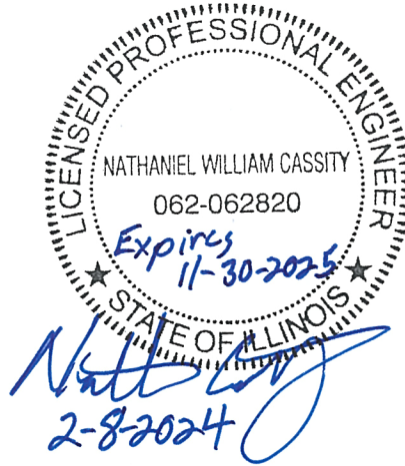
II. The following are revisions to the Drawings which pertain to Contract A:

1. Sheet 24, Drawing 050-R-2, delete Drawing 050-R-2 and add a revised Drawing 050-R-2 attached to this Addenda.
2. Sheet 29, Drawing 050-S-2, delete Drawing 050-S-2 and add a revised Drawing 050-S-2 attached to this Addenda.
3. Sheet 37, Drawing 050-M-2, delete Drawing 050-M-2 and add a revised Drawing 050-M-2 attached to this Addenda.
4. Sheet 40, Drawing 050-M-5, delete Drawing 050-M-5 and add a revised Drawing 050-M-5 attached to this Addenda.

- III. Any revisions to any of the Contract Documents made by this Addendum shall be considered as the same revision to any and all related areas of the Contract Documents not specifically called out in this Addendum.
- IV. The Bidder shall acknowledge receipt of this Addendum by inserting the date and number in the spaces provided in the BID FORM.

DONOHUE & ASSOCIATES, INC.
SHEBOYGAN, WISCONSIN

Nathan Cassity, PE

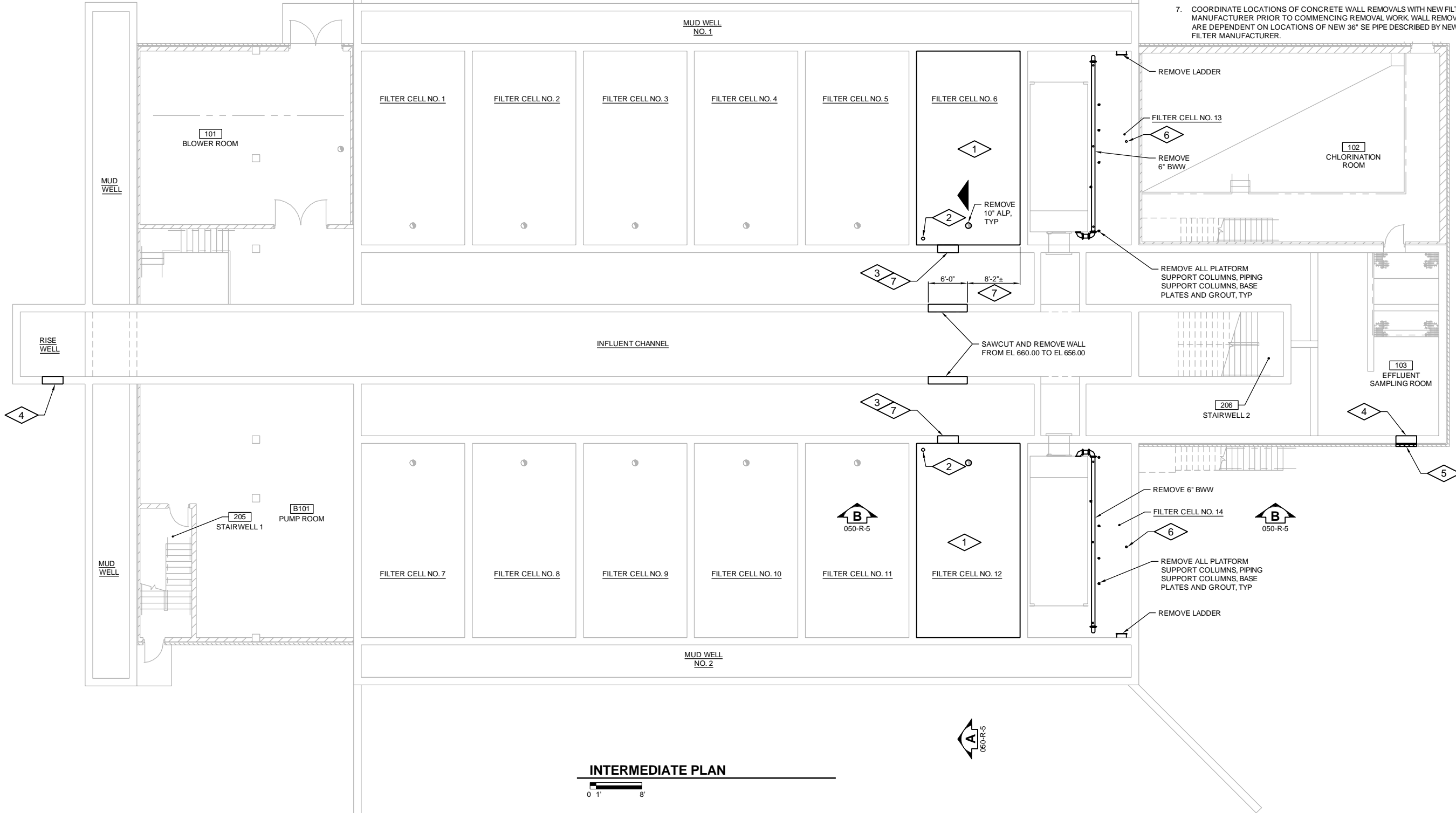


GENERAL NOTES:

- CONTRACTOR TO FIELD VERIFY EXISTING CONDITIONS, DIMENSIONS, AND ELEVATIONS PRIOR TO CONSTRUCTION AND/OR FABRICATION.
- FULL TONE COMPONENTS TO BE REMOVED.
- SAWCUT AND REMOVE CONCRETE TO THE LIMITS NOTED. IN EXPOSED AREAS NOT COVERED BY NEW CONSTRUCTION, REMOVE REINFORCEMENT AND EMBEDMENTS 1" BEYOND FINISHED SURFACE AND PATCH SURFACE WITH PATCHING MORTAR TO MATCH ADJACENT FINISHED SURFACE.
- REMOVE CONCRETE ANCHORS, ANCHOR BOLTS, AND OTHER EMBEDMENTS FOR MATERIALS AND EQUIPMENT BEING REMOVED. IN EXPOSED AREAS NOT COVERED BY NEW CONSTRUCTION, REMOVE CONCRETE ANCHORS, ANCHOR BOLTS, AND OTHER EMBEDMENTS 1" BEYOND FINISHED SURFACE AND PATCH SURFACE WITH PATCHING MORTAR. FINISH SURFACE TO MATCH ADJACENT FINISHED SURFACE.
- WHERE EQUIPMENT IS INDICATED TO BE REMOVED, REMOVE ALL ASSOCIATED POWER AND CONTROL WIRING AND CONDUIT BACK TO SOURCE. REMOVE JUNCTION BOXES AND PULL BOXES ASSOCIATED WITH THE REMOVED CONDUITS. WHERE CONDUIT SYSTEM CONTAINS CIRCUITS TO OTHER EQUIPMENT THAT REMAINS, RETAIN THESE CIRCUITS AND RELOCATE EXISTING CONDUIT AND EXTEND EXISTING CIRCUITS AS REQUIRED FOR THE INSTALLATION OF NEW EQUIPMENT.
- REMOVE ALL SUPPORTS ASSOCIATED WITH REMOVED PIPING, DUCTWORK, CONDUIT, AND EQUIPMENT. REMOVE RODS AND FASTENERS FROM CEILINGS, FLOORS, AND WALLS WITH CARE. WHERE SURFACE HAS BEEN MARRED, CHIPPED, SPAWLED, ETC. AS A RESULT OF REMOVAL, PATCH SURFACE WITH PATCHING MORTAR AND FINISH TO MATCH ADJACENT FINISHED SURFACE.
- REMOVE EXISTING CONCRETE PADS OF ANY EQUIPMENT BEING REMOVED. REMOVE CONCRETE REINFORCEMENT A MINIMUM OF 1" BEYOND FINISHED SURFACE AT ANY LOCATION WHERE NEW CONCRETE PAD WILL NOT COVER ROUGH SURFACE OF REMOVED PAD. PATCH SURFACE WITH PATCHING MORTAR AND FINISH TO MATCH ADJACENT FINISHED SURFACE.
- WHERE OPENINGS ARE LEFT IN WALLS, SLABS, OR CEILINGS DUE TO REMOVED PIPING, DUCTWORK, EQUIPMENT, OR OTHER WORK, PATCH OPENING TO MATCH ADJACENT SURFACES UNLESS NOTED OTHERWISE. THE PERIMETER OF OPENINGS IN CONCRETE WALLS AND SLABS EXPOSED TO EARTH, WEATHER, OR WATER SHALL BE LINED WITH A GASKET TYPE WATERSTOP PRIOR TO PATCHING OF THE WALL. OPENINGS IN PRECAST CONCRETE ROOF MEMBERS ARE TO BE PATCHED WITH CONCRETE AND DOWELED TO THE EXISTING ROOF MEMBERS UNLESS NOTED OTHERWISE. ROOFING SYSTEM SHALL BE PATCHED TO PREVENT ANY LEAKING AT THE OPENING.

PLAN NOTES:

- CONTRACTOR TO REMOVE ALL CONCRETE FILL DOWN TO BASE SLAB ELEVATION 649.00 AND ALL ASSOCIATED FILTER EQUIPMENT FROM SAND FILTER BASINS. REMOVE DETERIORATED CONCRETE ON WALLS AND FLOOR OF TANK CELLS DOWN TO SOUND CONCRETE. DO NOT CUT OR REMOVE EXISTING REINFORCEMENT IN WALLS OR BASE SLAB. CONTRACTOR TO CLEAN AND PREPARE TANK FOR NEW WORK.
- REMOVE BALL FLOAT AND ASSOCIATED APPURTENANCES.
- SAWCUT AND REMOVE WALL FOR NEW PROCESS PIPING. SEE M DRAWINGS FOR ADDITIONAL DETAILS AND (S)Z1.
- CORE DRILL AND REMOVE WALL FOR NEW BYPASS PIPING. SEE M DRAWINGS FOR ADDITIONAL DETAILS.
- EXTERIOR BRICK VENEER SHALL BE TEMPORARILY SUPPORTED AS REQUIRED DURING CONSTRUCTION OF BYPASS PIPING. SEE M DRAWINGS FOR DETAILS. SALVAGE REMOVED BRICK FOR REINSTALLATION.
- REMOVE STEM ON EXISTING MUD VALVE. SALVAGE STEM MOUNTING BRACKET FOR REINSTALLATION.
- COORDINATE LOCATIONS OF CONCRETE WALL REMOVALS WITH NEW FILTER MANUFACTURER PRIOR TO COMMENCING REMOVAL WORK. WALL REMOVALS ARE DEPENDENT ON LOCATIONS OF NEW 36" SE PIPE DESCRIBED BY NEW FILTER MANUFACTURER.



INTERMEDIATE PLAN



Revision Number	Revision Description	Date
01	ADDENDUM NO. 1	02/08/2024

Designed By	KAR/CDP
Drawn By	KAR/CDP
Checked By	WJR/SDR
Approved By	NWC/SDR
Filename	DPR50RP1.DWG
Project No.	14207.A
Project Date	JAN 2024

LAKE COUNTY DEPARTMENT OF PUBLIC WORKS
WRF IMPROVEMENTS
FILTER IMPROVEMENTS
CONTRACT A
BATTERY B FILTER BUILDING
REMOVAL PLAN



Sheet No.	24
Drawing No.	

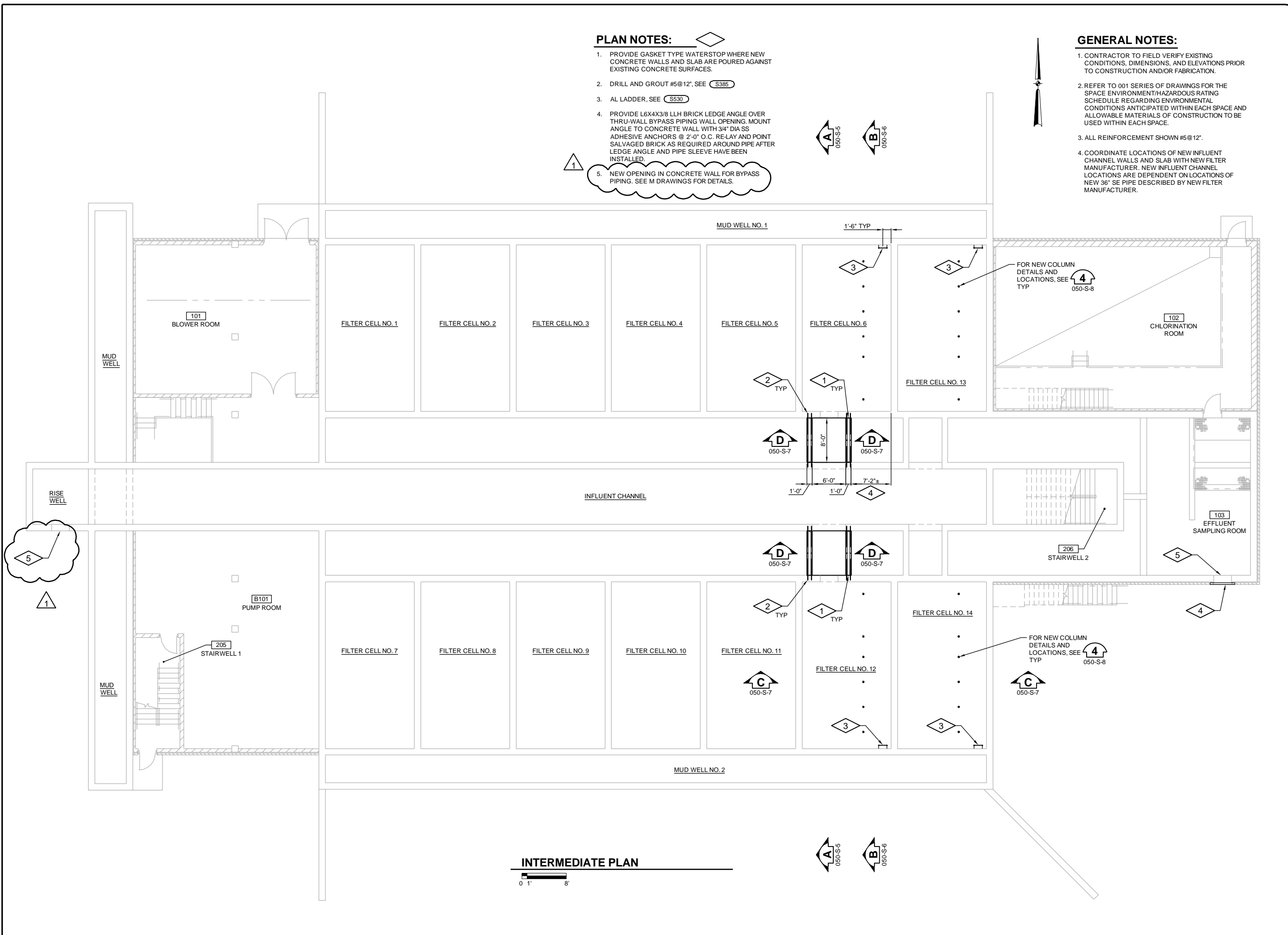
050-R-2

PLAN NOTES:

1. PROVIDE GASKET TYPE WATERSTOP WHERE NEW CONCRETE WALLS AND SLAB ARE POURED AGAINST EXISTING CONCRETE SURFACES.
2. DRILL AND GROUT #5@12", SEE S385
3. AL LADDER, SEE S530
4. PROVIDE L6X4X3/8 LLH BRICK LEDGE ANGLE OVER THRU-WALL BYPASS PIPING WALL OPENING. MOUNT ANGLE TO CONCRETE WALL WITH 3/4" DIA SS ADHESIVE ANCHORS @ 2'-0" O.C. RE-LAY AND POINT SALVAGED BRICK AS REQUIRED AROUND PIPE AFTER LEDGE ANGLE AND PIPE SLEEVE HAVE BEEN INSTALLED.
5. NEW OPENING IN CONCRETE WALL FOR BYPASS PIPING. SEE M DRAWINGS FOR DETAILS.

GENERAL NOTES:

1. CONTRACTOR TO FIELD VERIFY EXISTING CONDITIONS, DIMENSIONS, AND ELEVATIONS PRIOR TO CONSTRUCTION AND/OR FABRICATION.
2. REFER TO 001 SERIES OF DRAWINGS FOR THE SPACE ENVIRONMENT/HAZARDOUS RATING SCHEDULE REGARDING ENVIRONMENTAL CONDITIONS ANTICIPATED WITHIN EACH SPACE AND ALLOWABLE MATERIALS OF CONSTRUCTION TO BE USED WITHIN EACH SPACE.
3. ALL REINFORCEMENT SHOWN #5@12".
4. COORDINATE LOCATIONS OF NEW INFLUENT CHANNEL WALLS AND SLAB WITH NEW FILTER MANUFACTURER. NEW INFLUENT CHANNEL LOCATIONS ARE DEPENDENT ON LOCATIONS OF NEW 36" SE PIPE DESCRIBED BY NEW FILTER MANUFACTURER.



INTERMEDIATE PLAN



Date	02/08/2024
Checked By	NWC
Drawn By	CDP
Revision Description	ADDENDUM NO. 1
Revision Number	01
Designed By	CDP
Drawn By	CDP
Checked By	SDR
Approved By	SDR
Filename	DPR50SP1.DWG
Project No.	14207.A
Project Date	JAN 2024

LAKE COUNTY DEPARTMENT OF PUBLIC WORKS
WRF IMPROVEMENTS
FILTER IMPROVEMENTS
CONTRACT A
BATTERY B FILTER BUILDING
PLAN



Sheet No. 29
Drawing No.

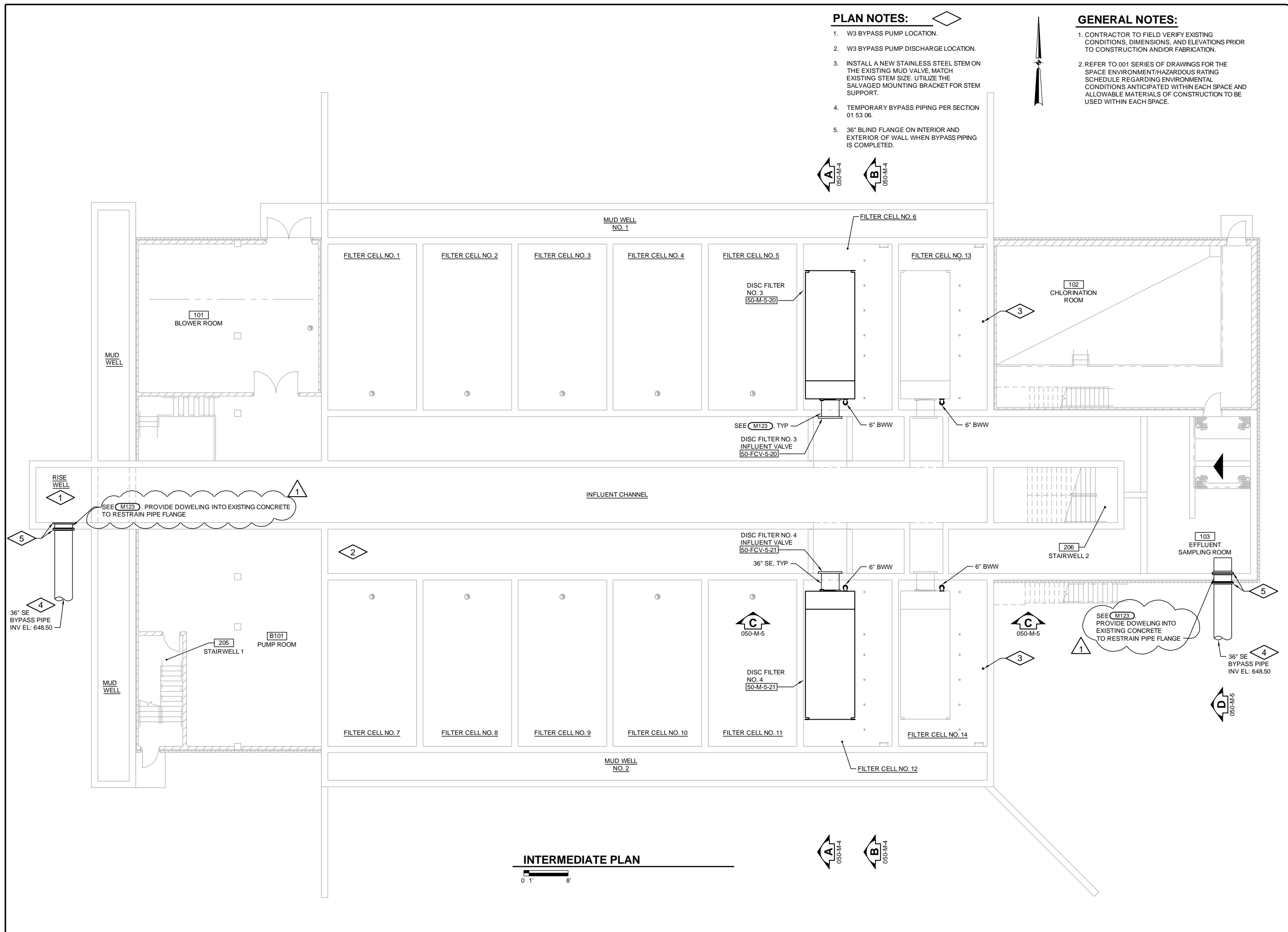
050-S-2

PLAN NOTES:

1. W3 BYPASS PUMP LOCATION.
2. W3 BYPASS PUMP DISCHARGE LOCATION.
3. INSTALL A NEW STAINLESS STEEL STEM ON THE EXISTING MUD VALVE, MATCH EXISTING STEM SIZE. UTILIZE THE SALVAGED MOUNTING BRACKET FOR STEM SUPPORT.
4. TEMPORARY BYPASS PIPING PER SECTION 01 53 06.
5. 36" BLIND FLANGE ON INTERIOR AND EXTERIOR OF WALL WHEN BYPASS PIPING IS COMPLETED.

GENERAL NOTES:

1. CONTRACTOR TO FIELD VERIFY EXISTING CONDITIONS, DIMENSIONS, AND ELEVATIONS PRIOR TO CONSTRUCTION AND/OR FABRICATION.
2. REFER TO 001 SERIES OF DRAWINGS FOR THE SPACE ENVIRONMENT/HAZARDOUS RATING SCHEDULE REGARDING ENVIRONMENTAL CONDITIONS ANTICIPATED WITHIN EACH SPACE AND ALLOWABLE MATERIALS OF CONSTRUCTION TO BE USED WITHIN EACH SPACE.



INTERMEDIATE PLAN

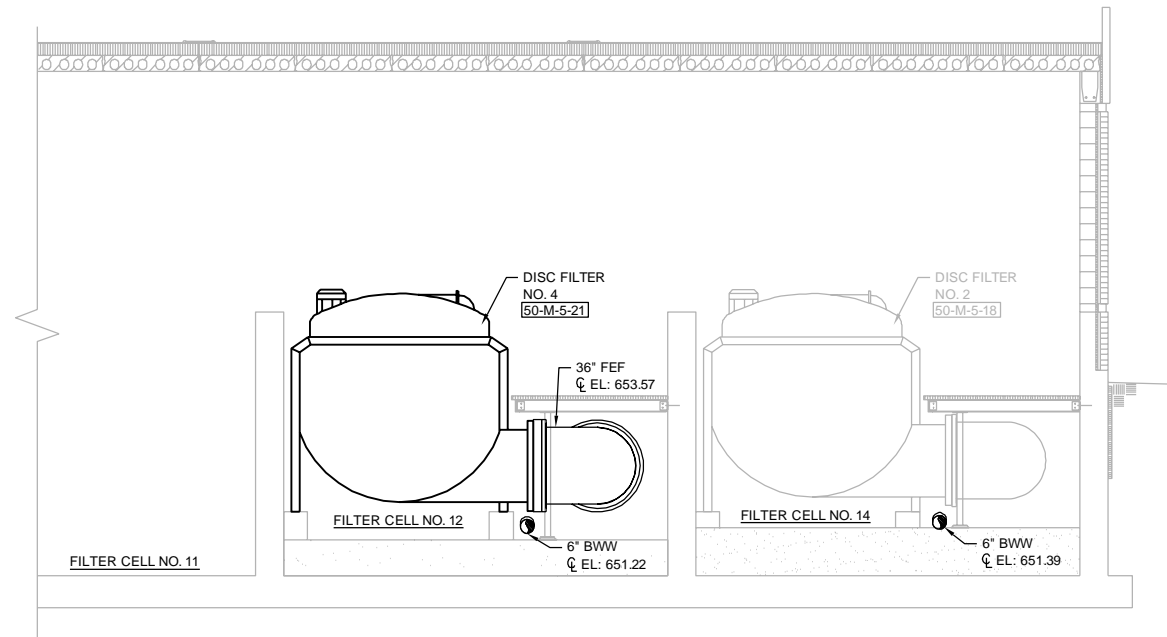


Revision Number	Revision Description	Checked By	Date
01	ADDENDUM NO. 1	NWC	02/08/2024

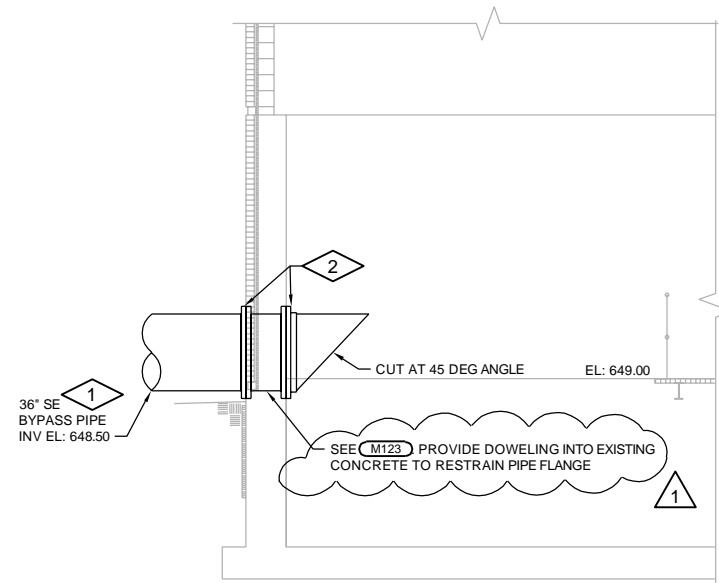
Designed By	KAR
Drawn By	KAR
Checked By	WJR
Approved By	NWC
Filename	DPR50MP1.DWG
Project No.	14207.A
Project Date	JAN 2024

LAKE COUNTY DEPARTMENT OF PUBLIC WORKS	
WRF IMPROVEMENTS	
CONTRACT A	
BATTERY B FILTER BUILDING PLAN	

DONOHUE	
Sheet No.	37
Drawing No.	050-M-2



SECTION C
 050-M-1
 050-M-2
 050-M-3



SECTION D
 050-M-2

GENERAL NOTES:

1. CONTRACTOR TO FIELD VERIFY EXISTING CONDITIONS, DIMENSIONS, AND ELEVATIONS PRIOR TO CONSTRUCTION AND/OR FABRICATION.
2. REFER TO 001 SERIES OF DRAWINGS FOR THE SPACE ENVIRONMENT/HAZARDOUS RATING SCHEDULE REGARDING ENVIRONMENTAL CONDITIONS ANTICIPATED WITHIN EACH SPACE AND ALLOWABLE MATERIALS OF CONSTRUCTION TO BE USED WITHIN EACH SPACE.

PLAN NOTES:

1. TEMPORARY BYPASS PIPING PER SECTION 01 53 06.
2. 36" BLIND FLANGE ON INTERIOR AND EXTERIOR OF WALL WHEN BYPASS PIPING IS COMPLETED.

Revision Number	Revision Description	Checked By	Date
01	ADDENDUM NO. 1	NWC	02/08/2024

Designed By	KAR
Drawn By	KAR
Checked By	WJR
Approved By	NWC
Filename	DPR50MS1.DWG
Project No.	14207.A
Project Date	JAN 2024

LAKE COUNTY DEPARTMENT OF PUBLIC WORKS
 WRF IMPROVEMENTS
 FILTER IMPROVEMENTS
 CONTRACT A
 BATTERY B FILTER BUILDING
 SECTIONS



Sheet No. 40
 Drawing No.

050-M-5