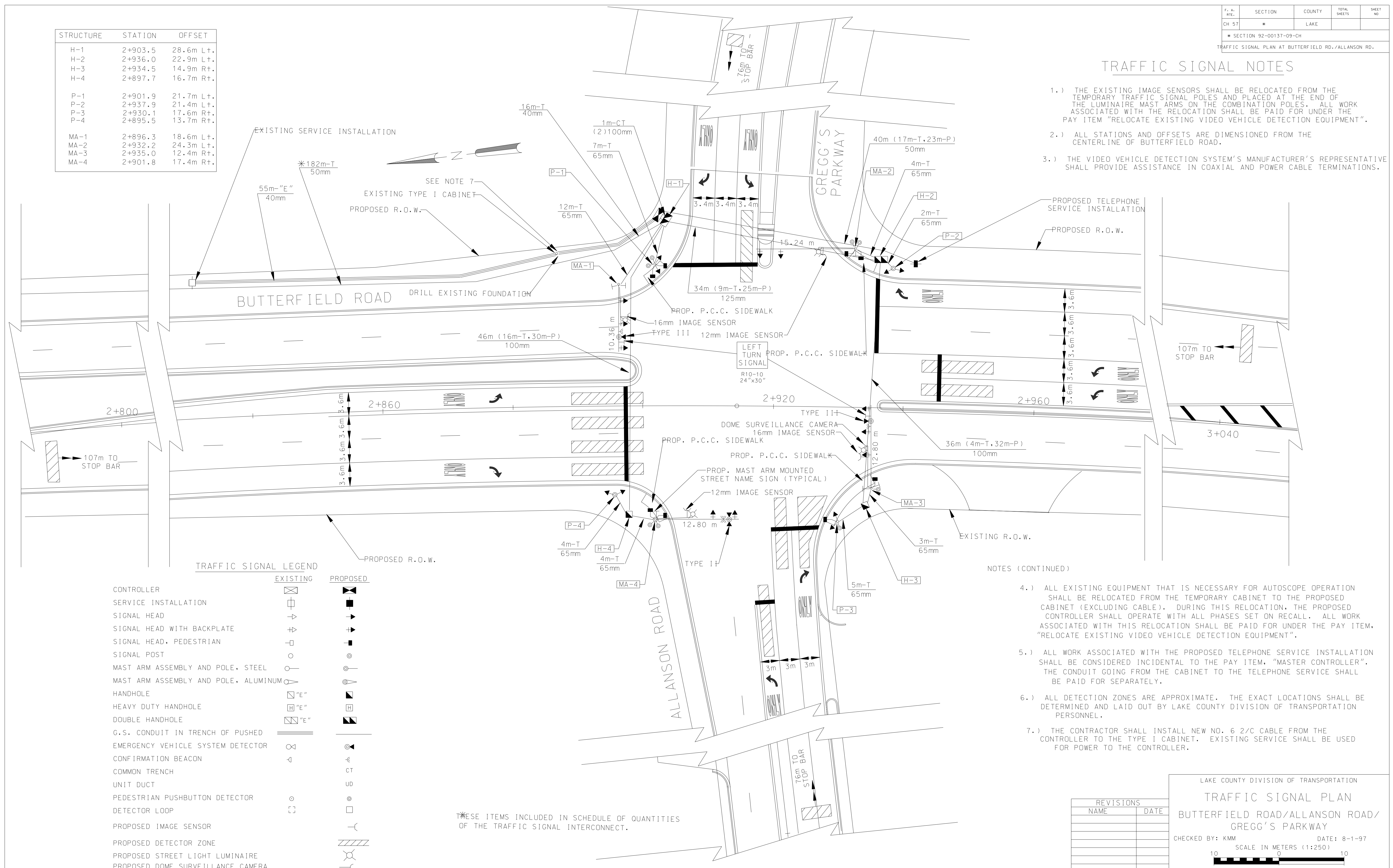


F. A. RFE.	SECTION	COUNTY	TOTAL SHEETS	SHEET NO.
CH 57	*	LAKE		
* SECTION 92-00137-09-CH				
TRAFFIC SIGNAL PLAN AT BUTTERFIELD RD./ALLANSON RD.				

### TRAFFIC SIGNAL NOTES

- 1.) THE EXISTING IMAGE SENSORS SHALL BE RELOCATED FROM THE TEMPORARY TRAFFIC SIGNAL POLES AND PLACED AT THE END OF THE LUMINAIRE MAST ARMS ON THE COMBINATION POLES. ALL WORK ASSOCIATED WITH THE RELOCATION SHALL BE PAID FOR UNDER THE PAY ITEM "RELOCATE EXISTING VIDEO VEHICLE DETECTION EQUIPMENT".
- 2.) ALL STATIONS AND OFFSETS ARE DIMENSIONED FROM THE CENTERLINE OF BUTTERFIELD ROAD.
- 3.) THE VIDEO VEHICLE DETECTION SYSTEM'S MANUFACTURER'S REPRESENTATIVE SHALL PROVIDE ASSISTANCE IN COAXIAL AND POWER CABLE TERMINATIONS.

STRUCTURE	STATION	OFFSET
H-1	2+903.5	28.6m Lt.
H-2	2+936.0	22.9m Lt.
H-3	2+934.5	14.9m Rt.
H-4	2+897.7	16.7m Rt.
P-1	2+901.9	21.7m Lt.
P-2	2+937.9	21.4m Lt.
P-3	2+930.1	17.6m Rt.
P-4	2+895.5	13.7m Rt.
MA-1	2+896.3	18.6m Lt.
MA-2	2+932.2	24.3m Lt.
MA-3	2+935.0	12.4m Rt.
MA-4	2+901.8	17.4m Rt.



#### TRAFFIC SIGNAL LEGEND

	EXISTING	PROPOSED
CONTROLLER		
SERVICE INSTALLATION		
SIGNAL HEAD		
SIGNAL HEAD WITH BACKPLATE		
SIGNAL HEAD, PEDESTRIAN		
SIGNAL POST		
MAST ARM ASSEMBLY AND POLE, STEEL		
MAST ARM ASSEMBLY AND POLE, ALUMINUM		
HANDHOLE		
HEAVY DUTY HANDHOLE		
DOUBLE HANDHOLE		
G.S. CONDUIT IN TRENCH OF PUSHED		
EMERGENCY VEHICLE SYSTEM DETECTOR		
CONFIRMATION BEACON		
COMMON TRENCH		
UNIT DUCT		
PEDESTRIAN PUSHBUTTON DETECTOR		
DETECTOR LOOP		
PROPOSED IMAGE SENSOR		
PROPOSED DETECTOR ZONE		
PROPOSED STREET LIGHT LUMINAIRE		
PROPOSED DOME SURVEILLANCE CAMERA		

THESE ITEMS INCLUDED IN SCHEDULE OF QUANTITIES OF THE TRAFFIC SIGNAL INTERCONNECT.

#### NOTES (CONTINUED)

- 4.) ALL EXISTING EQUIPMENT THAT IS NECESSARY FOR AUTOSCOPE OPERATION SHALL BE RELOCATED FROM THE TEMPORARY CABINET TO THE PROPOSED CABINET (EXCLUDING CABLE). DURING THIS RELOCATION, THE PROPOSED CONTROLLER SHALL OPERATE WITH ALL PHASES SET ON RECALL. ALL WORK ASSOCIATED WITH THIS RELOCATION SHALL BE PAID FOR UNDER THE PAY ITEM, "RELOCATE EXISTING VIDEO VEHICLE DETECTION EQUIPMENT".
- 5.) ALL WORK ASSOCIATED WITH THE PROPOSED TELEPHONE SERVICE INSTALLATION SHALL BE CONSIDERED INCIDENTAL TO THE PAY ITEM, "MASTER CONTROLLER". THE CONDUIT GOING FROM THE CABINET TO THE TELEPHONE SERVICE SHALL BE PAID FOR SEPARATELY.
- 6.) ALL DETECTION ZONES ARE APPROXIMATE. THE EXACT LOCATIONS SHALL BE DETERMINED AND LAID OUT BY LAKE COUNTY DIVISION OF TRANSPORTATION PERSONNEL.
- 7.) THE CONTRACTOR SHALL INSTALL NEW NO. 6 2/C CABLE FROM THE CONTROLLER TO THE TYPE I CABINET. EXISTING SERVICE SHALL BE USED FOR POWER TO THE CONTROLLER.

REVISIONS	
NAME	DATE

LAKE COUNTY DIVISION OF TRANSPORTATION

### TRAFFIC SIGNAL PLAN

BUTTERFIELD ROAD/ALLANSON ROAD/  
GREGG'S PARKWAY

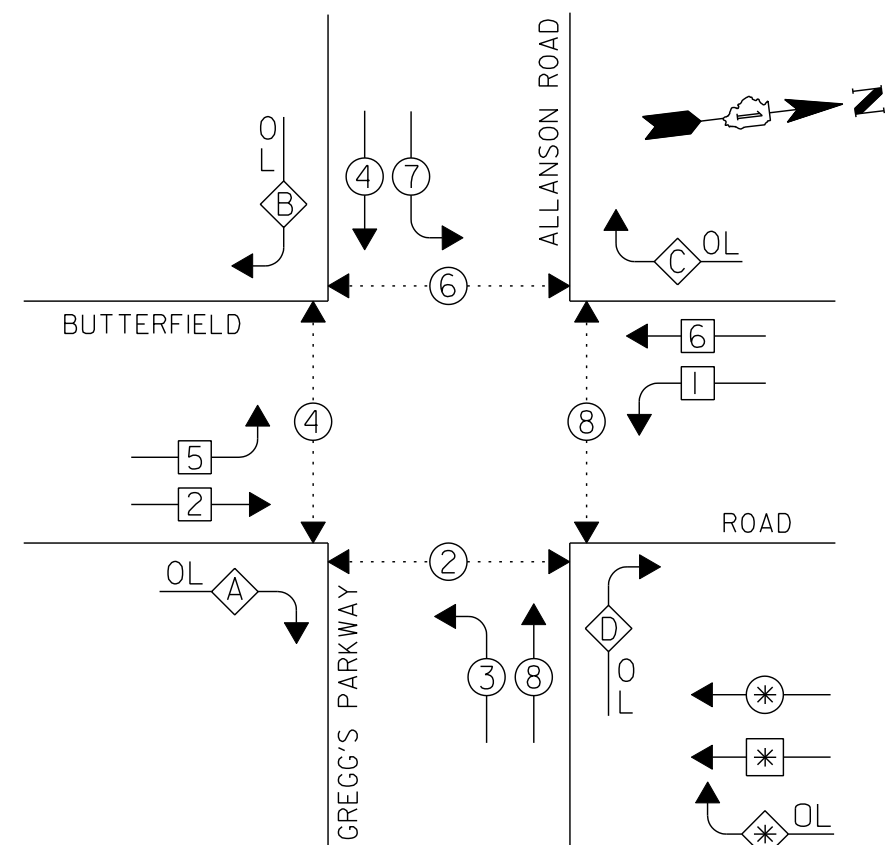
CHECKED BY: KMM DATE: 8-1-97

SCALE IN METERS (1:250)

CABLE PLAN LEGEND

- |          |          |   |
|----------|----------|---|
| EXISTING | PROPOSED |   |
|          |          | 8' TRAFFIC SIGNAL SECTION   |
|          |          | 12' TRAFFIC SIGNAL SECTION  |
|          |          | 12' PEDESTRIAN SIGNAL SECTION   |
|          |          | 12' PEDESTRIAN SIGNAL SECTION   |
|          |          | CONTROLLER CABINET  |
|          |          | SERVICE INSTALLATION  |
|          |          | TELEPHONE INSTALLATION  |
|          |          | VEHICLE DETECTOR, INDUCTION LOOP  |
|          |          | MAGNETIC DETECTOR   |
|          |          | EMERGENCY VEHICLE LIGHT DETECTOR  |
|          |          | CONFIRMATION BEACON   |
|          |          | PUSHBUTTON DETECTOR   |
|          |          | 2 DENOTES NUMBER OF CONDUCTORS. ALL CABLE NO. 14 EXCEPT AS INDICATED. ALL LOOP DETECTOR CABLE TO BE SHIELDED. |
|          |          | 1 GROUND CABLE IN CONDUIT NO. 6 SOLID COPPER (GREEN)  |
|          |          | 24 FIBER OPTIC CABLE IN CONDUIT NO. 62.5/125 2-MM2F & SM2F  |
|          |          | SIGNAL FACE WITH BACKPLATE. 'P' INDICATES PROGRAMMED HEAD.  |
|          |          | "E" R R RAILROAD CONTROL CABINET  |
|          |          | "E" ILLUMINATED SIGN, FIBER OPTIC 'NO LEFT TURN'  |
|          |          | "E" ILLUMINATED SIGN, FIBER OPTIC 'NO RIGHT TURN'   |
|          |          | H/C GROUND ROD AT HANDHOLE, DOUBLE HANDHOLE, OR CONTROLLER  |
|          |          | P GROUND ROD AT POST OR MAST ARM POLE   |
|          |          | S GROUND ROD AT ELECTRIC SERVICE INSTALLATION   |
|          |          | L LUMINAIRE   |
|          |          | C COAXIAL CABLE   |
|          |          | M MACHINE VISION PROCESSOR  |
|          |          | D DOME CAMERA   |
|          |          | V VIDEO CABLE, NO. 16 3/C   |

EXISTING CONTROLLER SEQUENCE



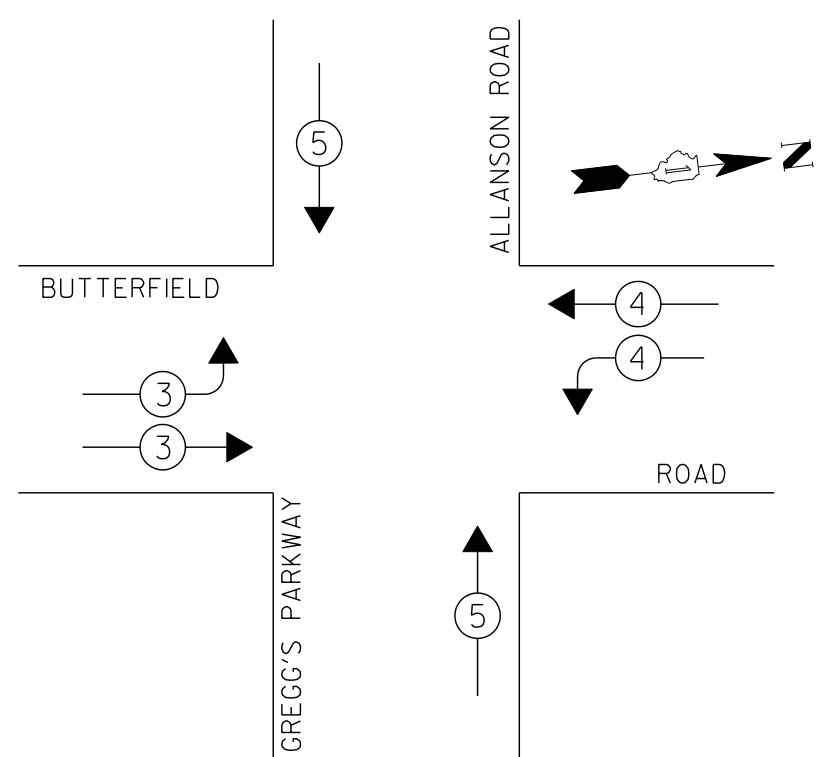
- LEGEND
- DUAL ENTRY PHASE
  - SINGLE ENTRY PHASE
  - OVERLAP
  - PEDESTRIAN PHASE
  - \* NUMBER REFERS TO ASSOCIATED PHASE

PHASE DESIGNATION DIAGRAM

RIGHT TURN OVERLAP PHASE DESIGNATION

OVERLAP LETTER	PERMISSIVE PHASE	PROTECTED PHASE
A	2	3
B	4	5
C	6	7
D	8	1

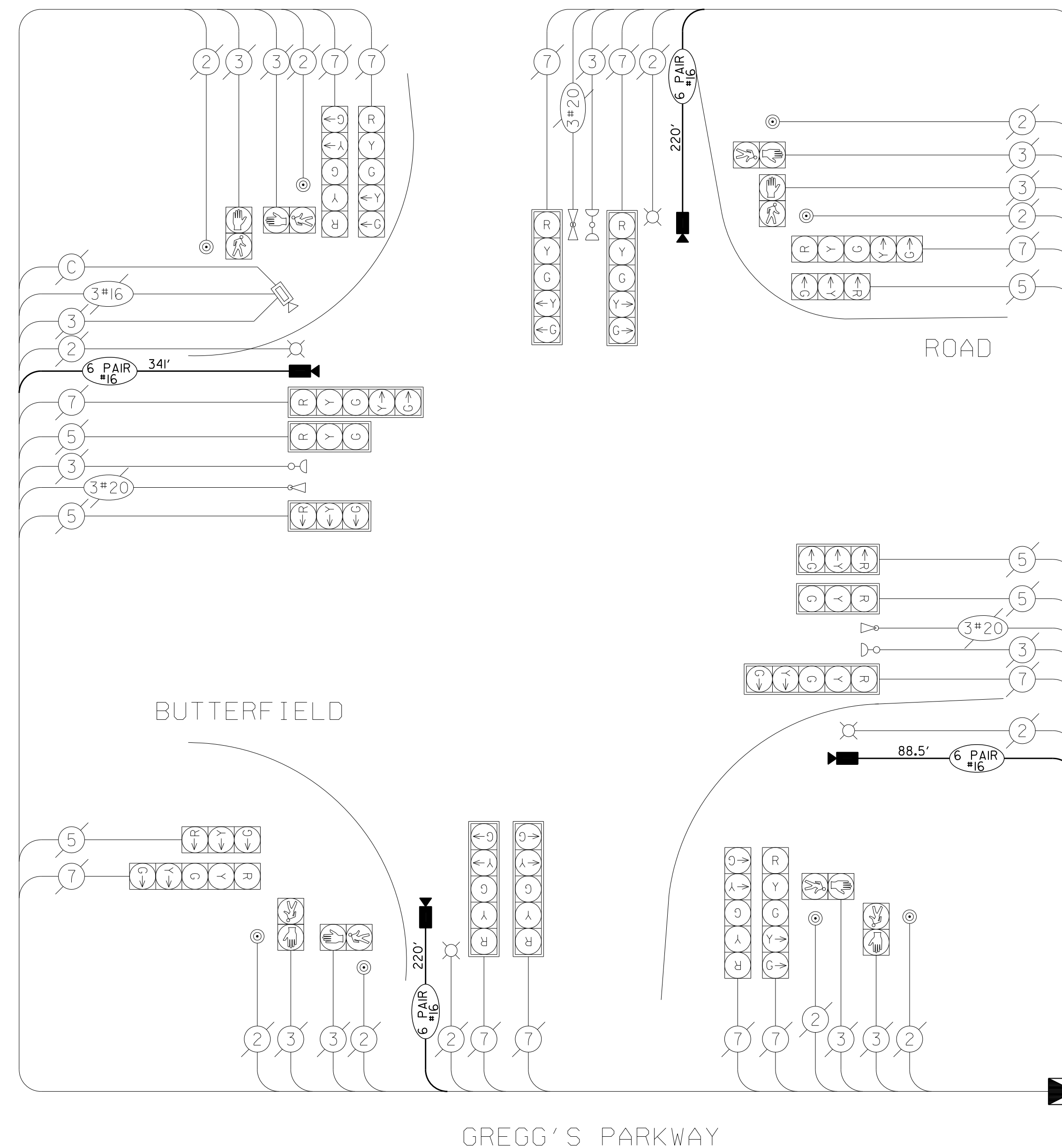
PROPOSED EMERGENCY VEHICLE PREEMPTION SEQUENCE



PROPOSED EMERGENCY VEHICLE PREEMPTOR

EMERGENCY VEHICLE PREEMPTOR	3	4	5
MOVEMENT			

ALLANSON ROAD



- TRACER CABLE NO. 14 1/C
- INTERCONNECT TO HUNTINGTON DRIVE NORTH SEE INTERCONNECT PLAN
- FIBER OPTIC CABLE NO. 62.5/125 12F MULTIMODE AND 12F SINGLE MODE

PROPOSED LOCAL AND MASTER CONTROLLER IN TYPE V CABINET

SCHEDULE OF QUANTITIES

ELECTRIC CABLE IN CONDUIT, COMMUNICATION, NO. 16 6 PAIR	FOOT	869
MAINTENANCE OF EXISTING TRAFFIC SIGNAL INSTALLATION	L SUM	1
FULL-ACTUATED CONTROLLER AND TYPE V CABINET	EACH	1
MASTER CONTROLLER	EACH	1
TRANSCEIVER - FIBER OPTIC	EACH	1
RELOCATE EXISTING EMERGENCY VEHICLE PRIORITY SYSTEM, PHASING UNIT	EACH	1
REMOVE ELECTRIC CABLE FROM CONDUIT	FOOT	869
REMOVE EXISTING TRAFFIC SIGNAL EQUIPMENT	EACH	1
VIDEO DETECTION SYSTEM	EACH	1