

A

B

C

D

E

F

1

2

3

4

5

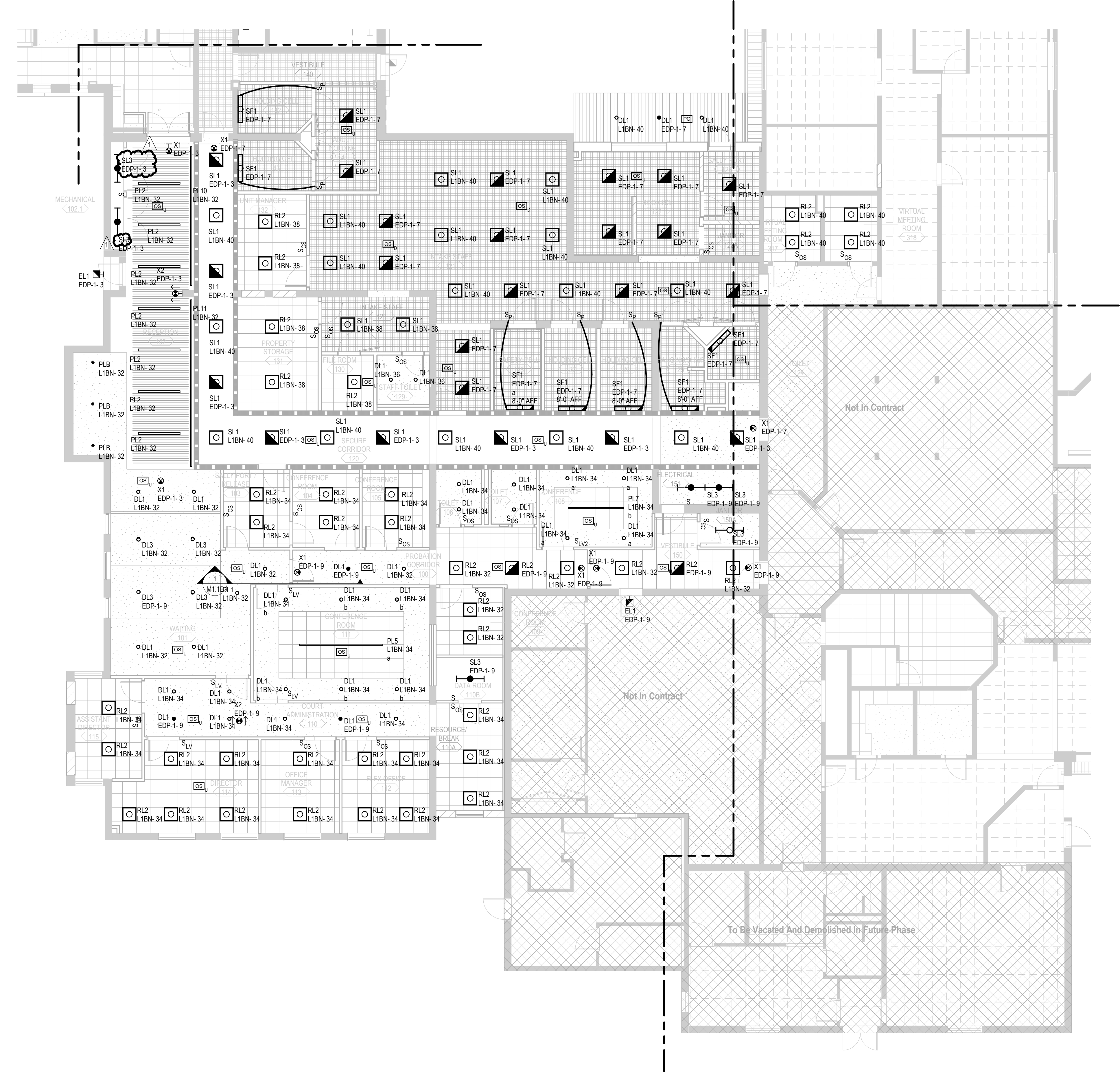
GENERAL LIGHTING NOTES

- (TYPICAL ALL LIGHTING SHEETS)
1. SEE LIGHT FIXTURE SCHEDULE AND SYMBOLS LEGEND FOR MOUNTING HEIGHTS, UNLESS NOTED OTHERWISE.
 2. PROVIDE #16AWG MINIMUM CONDUCTORS FOR ALL EXTERIOR LIGHTING CIRCUITS.
 3. SEE ARCHITECTURAL BUILDING ELEVATIONS FOR LOCATION OF BUILDING MOUNTED EXTERIOR LIGHT FIXTURES.
 4. PROVIDE BEAD OF SILICON SEALANT AROUND RECESSED BACK BOX PERIMETER AT ALL BUILDING MOUNTED EXTERIOR LIGHT FIXTURE LOCATIONS.
 5. CIRCUIT FIXTURES DENOTED WITH 'NL' AS UNSWITCHED NIGHT LIGHTS.
 6. FIXTURES DENOTED WITH LOWER CASE LETTERS SHALL BE CONTROLLED BY SWITCHES DENOTED WITH THE SAME LOWER CASE LETTER IN EACH ROOM.

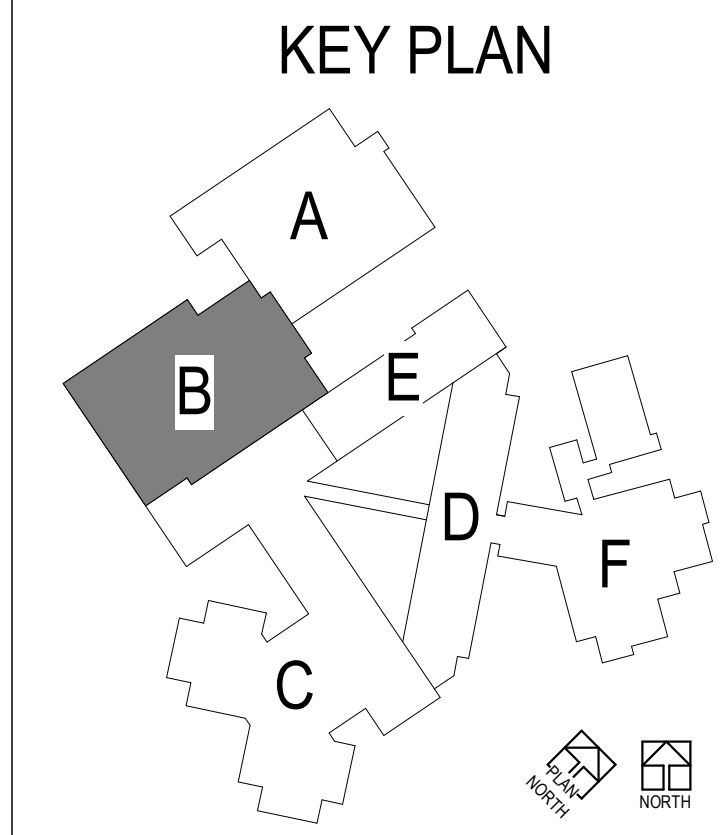


NOT FOR
CONSTRUCTION

SHEET NOTES



LEVEL 01 - AREA B - LIGHTING PLAN
E1.1B SCALE: 1/8" = 1'-0"



Robert W. Depke Juvenile Center Renovation

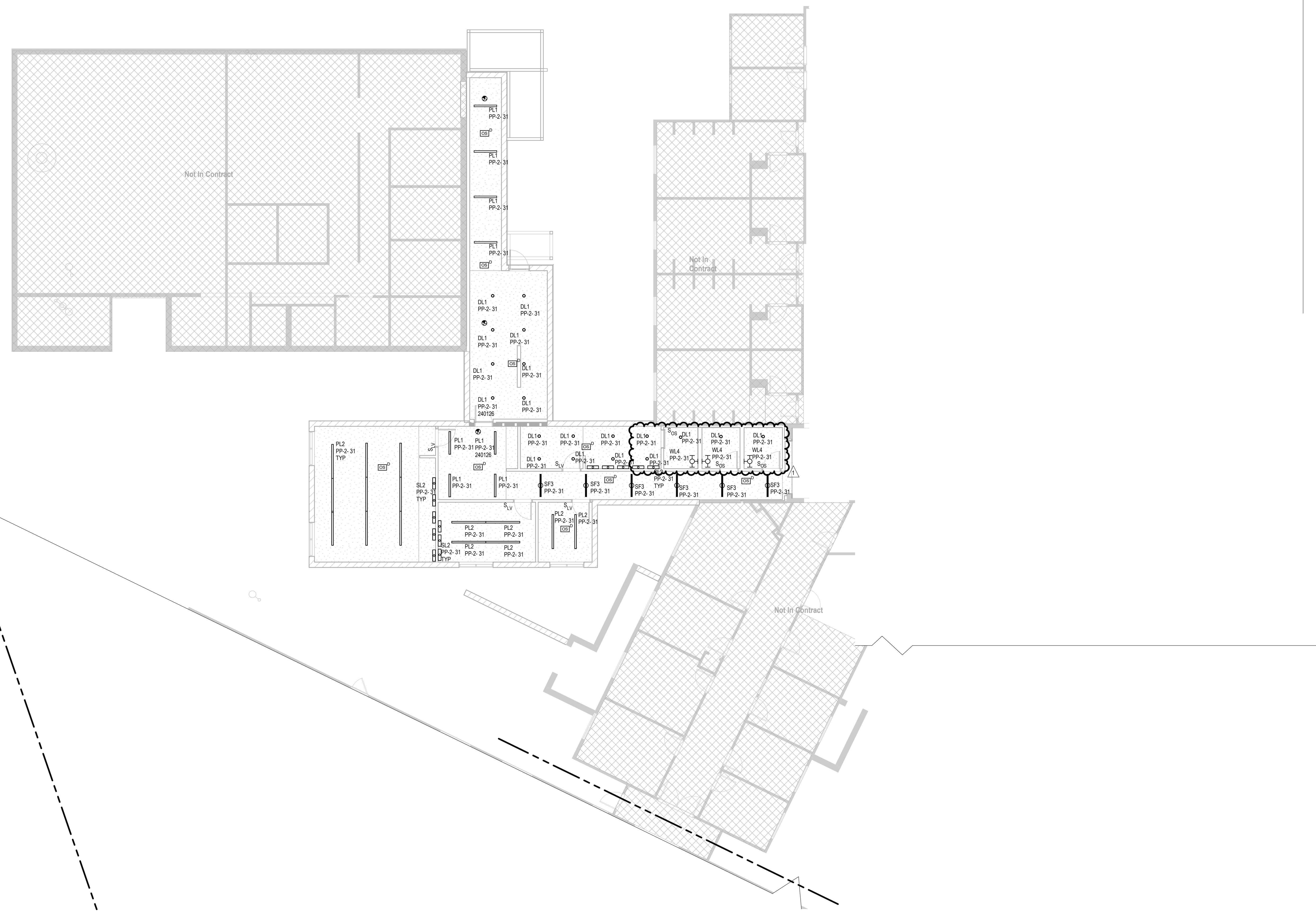
24857 North Milwaukee Avenue
Vernon Hills, Illinois 60061

BID SET
06/20/2024
REVISIONS
1 ADDENDUM #3 7.29.2024

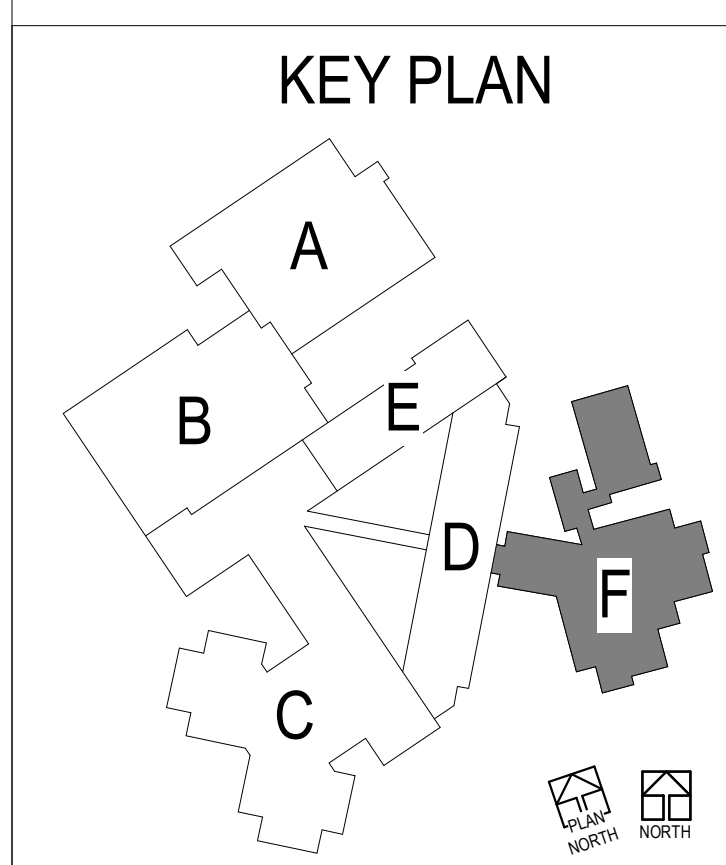
22-22114-00
LEVEL 01 - AREA
B - LIGHTING
PLAN

E1.1B

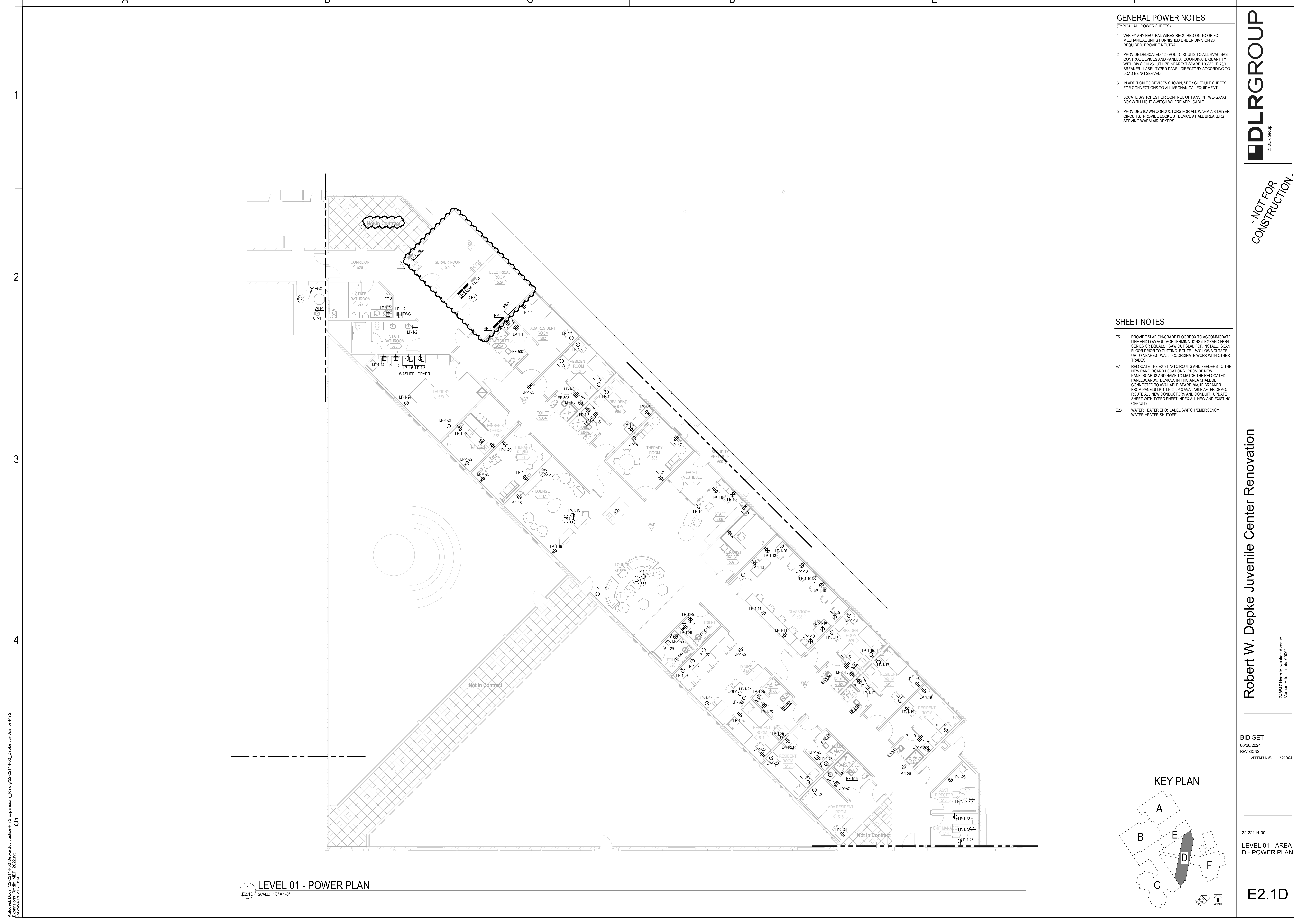
Mechanical Drawings 22-22114-00 Depke Juvenile Center Renovation - Revit 22-22114-00_Depke Juvenile Center Renovation - Revit 22-22114-00
 Expansions - Revit 22-22114-00
 7/26/2024 10:11:11 AM



LEVEL 01 - AREA F - LIGHTING PLAN
 SCALE: 1/8" = 1'-0"



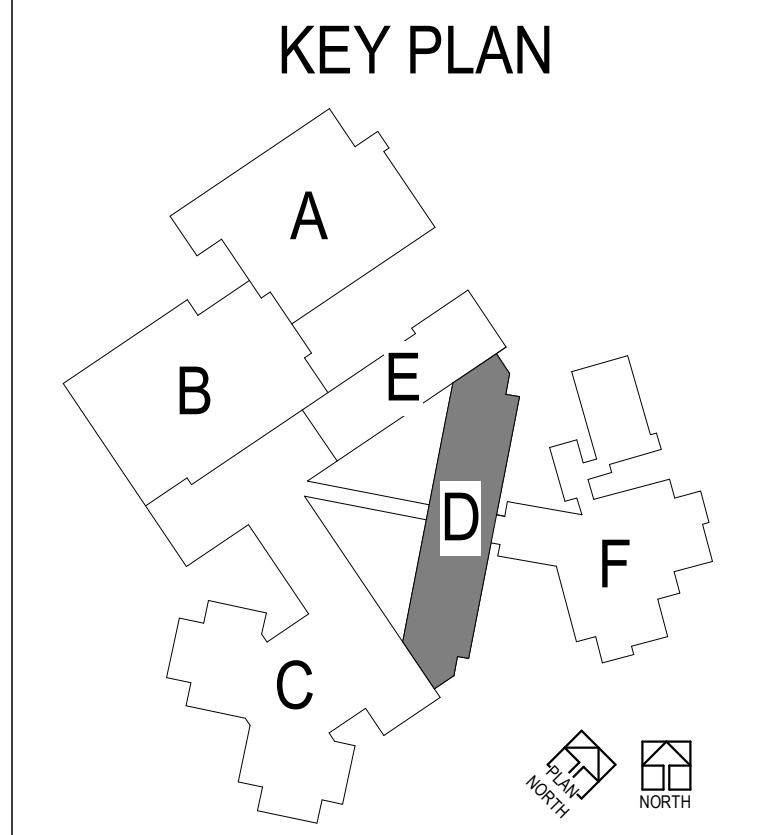
Medical Center 22-22114-00 Depke Juvenile Center Renovation - Rwdlg2222114-00_Depke Juvenile Center Renovation - Rwdlg2222114-00_Depke Juvenile Center Renovation - Rwdlg2222114-00
 7/26/2024 10:17:40 AM



1 LEVEL 01 - POWER PLAN
 E2.1D SCALE: 1/8" = 1'-0"

- GENERAL POWER NOTES**
 (TYPICAL ALL POWER SHEETS)
1. VERIFY ANY NEUTRAL WIRES REQUIRED ON 1Ø OR 3Ø MECHANICAL UNITS FURNISHED UNDER DIVISION 23. IF REQUIRED, PROVIDE NEUTRAL.
 2. PROVIDE DEDICATED 120-VOLT CIRCUITS TO ALL HVAC BAS CONTROL DEVICES AND PANELS. COORDINATE QUANTITY WITH DIVISION 23. UTILIZE NEAREST SPARE 120-VOLT, 201 BREAKER. LABEL TYPED PANEL DIRECTORY ACCORDING TO LOAD BEING SERVED.
 3. IN ADDITION TO DEVICES SHOWN, SEE SCHEDULE SHEETS FOR CONNECTIONS TO ALL MECHANICAL EQUIPMENT.
 4. LOCATE SWITCHES FOR CONTROL OF FANS IN TWO-GANG BOX WITH LIGHT SWITCH WHERE APPLICABLE.
 5. PROVIDE #10AWG CONDUCTORS FOR ALL WARM AIR DRYER CIRCUITS. PROVIDE LOCKOUT DEVICE AT ALL BREAKERS SERVING WARM AIR DRYERS.

- SHEET NOTES**
- E5 PROVIDE SLAB ON-GRADE FLOORBOX TO ACCOMMODATE LINE AND LOW VOLTAGE TERMINATIONS (LEGRAND FBR SERIES OR EQUAL). SAW CUT SLAB FOR INSTALL. SCAN FLOOR PRIOR TO CUTTING. ROUTE 1 1/2" LOW VOLTAGE UP TO NEAREST WALL. COORDINATE WORK WITH OTHER TRADES.
 - E7 RELOCATE THE EXISTING CIRCUITS AND FEEDERS TO THE NEW PANELBOARD LOCATIONS. PROVIDE NEW PANELBOARDS AND NAME TO MATCH THE RELOCATED PANELBOARDS. DEVICES IN THIS AREA SHALL BE CONNECTED TO AVAILABLE SPARE 20A/1P BREAKER FROM PANELS LP-1-1, LP-2, LP-3 AVAILABLE AFTER DEMO. ROUTE ALL NEW CONDUCTORS AND CONDUIT. UPDATE SHEET WITH TYPED SHEET INDEX ALL NEW AND EXISTING CIRCUITS.
 - E23 WATER HEATER EPO. LABEL SWITCH 'EMERGENCY WATER HEATER SHUTOFF'



DLR GROUP
 © DLR Group

NOT FOR CONSTRUCTION

Robert W. Depke Juvenile Center Renovation
 24857 North Milwaukee Avenue
 Vernon Hills, Illinois 60061

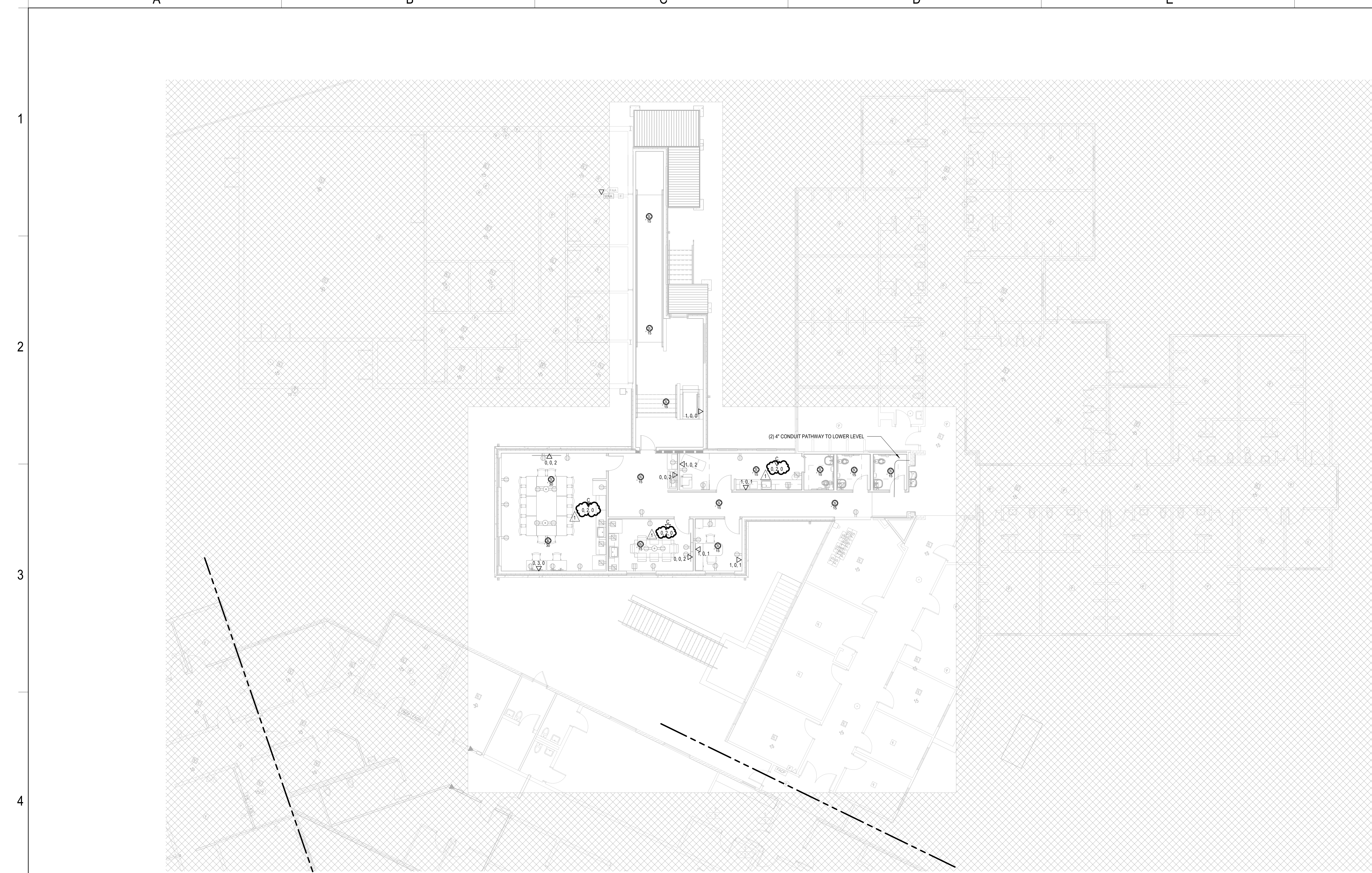
BID SET
 08/20/2024

REVISIONS
 1 ADDENDUM #3 7.29.2024

22-22114-00
 LEVEL 01 - AREA D - POWER PLAN

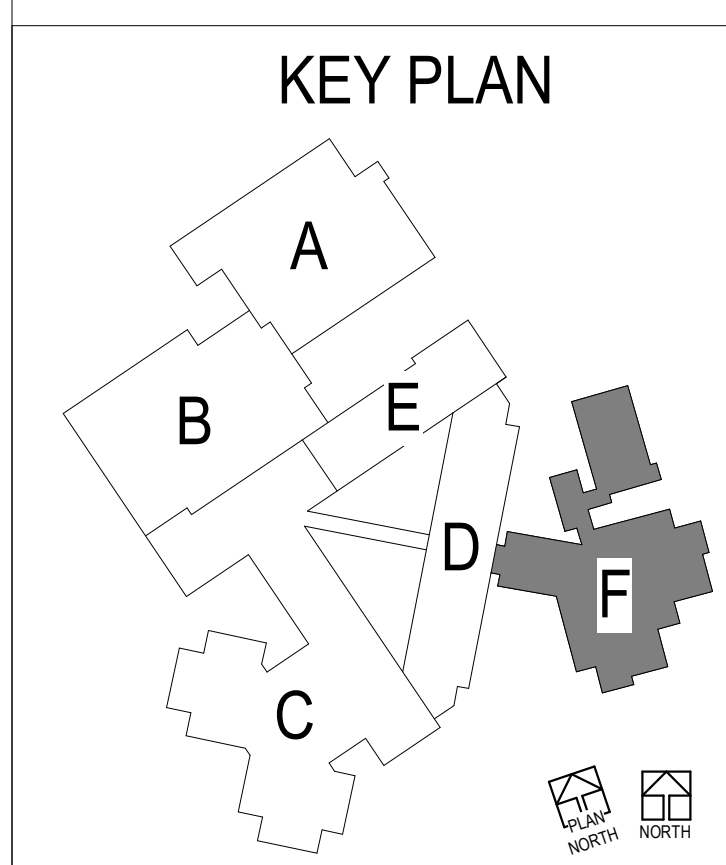
E2.1D

Model: E:\22-22114-00\Drawings\Level 01 - Power Plan.dwg
 Date: 08/20/2024
 Author: J. R. [unreadable]
 Project: Robert W. Depke Juvenile Center Renovation
 Sheet: E2.1D



Model: 22-22114-00_Robert W. Depke Juvenile Center Expansion - Revit 22-22114-00_Depke Juvenile Center Expansion - Revit 22-22114-00
 Expansion - Revit 22-22114-00
 7/26/2024 10:30:30 AM

LEVEL 01 - SPECIAL SYSTEMS PLAN
 SCALE: 1/8" = 1'-0"



DLR GROUP
© DLR Group

Robert W. Depke Juvenile Center Renovation

24857 North Milwaukee Avenue
Vernon Hills, Illinois 60061

BID SET
08/20/2024

REVISIONS
1 ADDENDUM #3 7.29.2024

22-22114-00

LEVEL 01 - AREA F
- SPECIAL SYSTEMS PLAN

E3.1F

1

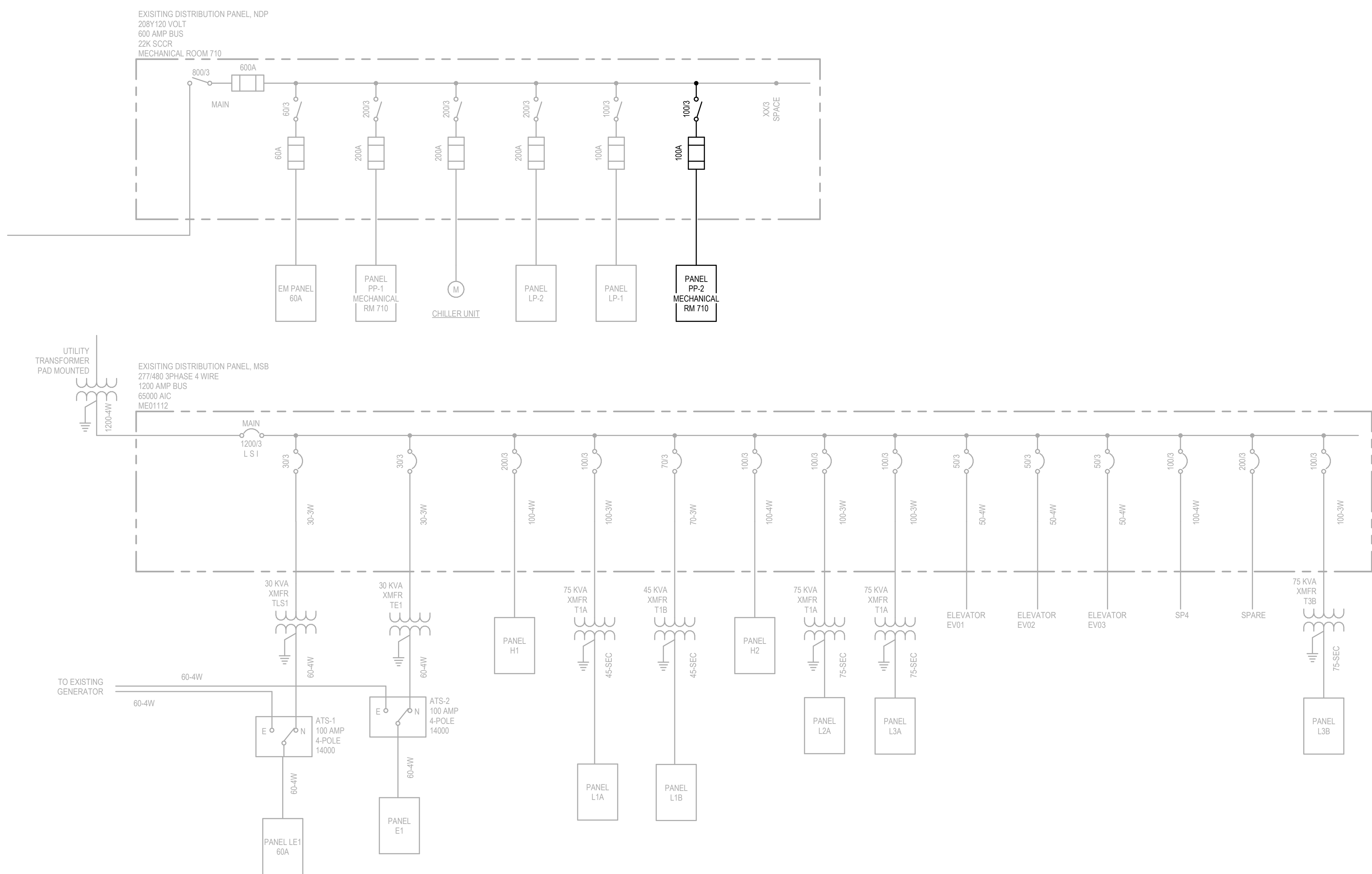
2

3

4

5

Medical Center 2022-2023 14-00 Depke Juv Justice-Fm 2
Exemptions: Ruidig 222114-00 Depke Juv Justice-Fm 2
7/20/2022 M



GENERAL SINGLE LINE NOTES

- OVERCURRENT DEVICES OF ENTIRE DISTRIBUTION SYSTEM SHALL MEET STATED FAULT CURRENT VALUES WITH FULLY RATED EQUIPMENT.
- CONDUCTOR LENGTHS INDICATED ON THE SINGLE LINE DIAGRAM ARE FOR FAULT CURRENT CALCULATIONS ONLY. ACTUAL LENGTH SHALL BE DETERMINED BY FIELD CONDITIONS AND ACTUAL ROUTES OF FEEDERS.
- REFER TO SWITCHBOARD SCHEDULES AND DISTRIBUTION PANEL SCHEDULES FOR ADDITIONAL REQUIREMENTS. WHERE A DISCREPANCY EXISTS BETWEEN EQUIPMENT ON THE SINGLE LINE DIAGRAM AND THE DETAILED SCHEDULES, THE ITEM OR ARRANGEMENT WITH BETTER QUALITY, GREATER QUANTITY, OR HIGHER COST SHALL BE USED.
- ALL DISCREPANCIES SHALL BE BROUGHT TO THE ATTENTION OF THE ENGINEER.
- REFER TO THE MOTOR AND SPECIAL CONNECTION SCHEDULE FOR ALL FEEDERS DESIGNATED "SC".
- GROUNDING ELECTRODE CONDUCTOR SIZES ARE NOT INDICATED ON THE SINGLE LINE DIAGRAM. REFER TO THE GROUNDING RISER DIAGRAM FOR CONNECTIONS AND CONDUCTOR SIZES.

SHEET NOTES

- E11 PROVIDE CONNECTION TO PANELBOARD. UTILIZE EXISTING RACEWAY AT DISTRIBUTION PANELBOARD. NEW RACEWAY AND CONDUCTORS WHERE ADDITIONAL LENGTH IS REQUIRED FOR EXISTING BRANCH CIRCUITS AND FEEDERS. REUSE EXISTING FITTINGS.

FEEDER SCHEDULE - COPPER

MARK (AMPS)	# SETS	Ø & N	GND	CONDUIT SIZE		
				MARK SUFFIX	-4W	-3W
15	1	12	12	3/4"	3/4"	3/4"
20	1	12	12	3/4"	3/4"	3/4"
25	1	10	10	3/4"	3/4"	3/4"
30	1	10	10	3/4"	3/4"	3/4"
35	1	8	10	3/4"	3/4"	3/4"
40	1	8	10	3/4"	3/4"	3/4"
45	1	6	10	1"	3/4"	3/4"
50	1	6	10	1"	3/4"	3/4"
60	1	4	10	1-1/4"	1"	3/4"
70	1	4	8	1-1/4"	1"	3/4"
80	1	3	8	1-1/4"	1-1/4"	1"
90	1	2	8	1-1/4"	1-1/4"	1"
100	1	1	8	1-1/2"	1-1/2"	1-1/4"
110	1	1	6	1-1/2"	1-1/2"	1-1/4"
125	1	1	6	1-1/2"	1-1/2"	1-1/4"
150	1	1/0	6	2"	2"	1-1/2"
175	1	2/0	6	2"	2"	1-1/2"
200	1	3/0	6	2"	2"	1-1/2"
225	1	4/0	4	2-1/2"	2"	1-1/2"
250	1	250	4	2-1/2"	2"	1-1/2"
300	1	350	4	3"	2-1/2"	2"
350	1	500	3	3-1/2"	3"	2-1/2"
400	1	600	3	3-1/2"	3"	2-1/2"
400	2	3/0	3	2"	2"	1-1/2"
450	2	4/0	2	2-1/2"	2"	1-1/2"
500	2	250	2	2-1/2"	2-1/2"	2"
600	2	350	1	3"	2-1/2"	2"
700	2	500	1/0	3-1/2"	3"	2-1/2"
800	2	600	1/0	3-1/2"	3"	2-1/2"
1000	3	400	2/0	3"	3"	2-1/2"
1200	3	600	3/0	3-1/2"	3-1/2"	3"
1600	4	600	4/0	3-1/2"	3-1/2"	3"
2000	5	600	250	4"	3-1/2"	3"
2500	6	600	350	4"	3-1/2"	3"
3000	8	500	400	3-1/2"	3"	2-1/2"
4000	10	600	500	4"	3-1/2"	3"

ABBREVIATIONS:
 Ø PHASE
 N NEUTRAL
 GND EQUIPMENT GROUNDING CONDUCTOR
 -4W FOUR WIRE + GROUND (3Ø,N,GND)
 -3W THREE WIRE + GROUND (3Ø,GND or 2Ø,N,GND)
 -2W TWO WIRE + GROUND

NOTES:
 1. CONDUCTOR AMPACITIES ARE BASED ON NEC TABLE 310.15(B)(16).
 2. CONDUIT SIZES ARE BASED ON A MAXIMUM FILL RATIO OF 40%.
 3. SCHEDULE SHALL BE USED FOR FEEDERS AND BRANCH CIRCUITS WHERE APPLICABLE.
 4. ALL FEEDERS AND BRANCH CIRCUITS SHALL INCLUDE AN EQUIPMENT GROUNDING CONDUCTOR. SCHEDULE IS VALID FOR TYPE THHN, THWN-2, AND XHHW-2 CONDUCTORS. SEE SPECIFICATIONS FOR CONDUCTOR TYPES REQUIRED.
 5. SCHEDULE IS VALID FOR TYPE EMT, IMC, FMC, LFMC, HDPE, AND RNC-40 RACEWAYS. SEE SPECIFICATIONS FOR RACEWAY APPLICATIONS. OPTIONAL CONFIGURATIONS (1 OR 2 SETS) ARE GIVEN FOR SOME SIZES.
 6. NOT ALL SIZES USED.

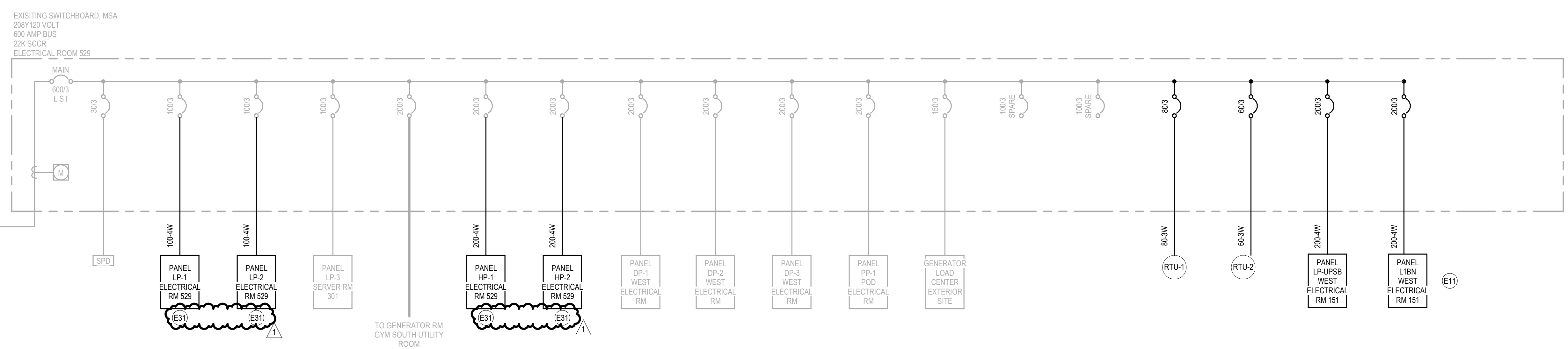
FEEDER SCHEDULE - ALUMINUM

MARK (AMPS)	# SETS	Ø & N	GND	CONDUIT SIZE		
				MARK SUFFIX	-4W	-3W
15						
20						
25						
30						
35						
40						
45						
50						
60						
70						
80						
90						
100						
110	1	1/0	4	2"	1-1/2"	1-1/4"
125	1	2/0	4	2"	2"	1-1/2"
150	1	3/0	4	2"	2"	1-1/2"
175	1	4/0	4	2-1/2"	2"	1-1/2"
200	1	250	4	2-1/2"	2-1/2"	2"
225	1	300	2	3"	2-1/2"	2"
250	1	350	2	3"	2-1/2"	2"
300	1	500	2	3-1/2"	3"	2-1/2"
350	1	750	1	4"	3-1/2"	3"
350	2	4/0	1	2-1/2"	2"	1-1/2"
400	2	250	1	2-1/2"	2-1/2"	2"
450	2	300	1/0	3"	2-1/2"	2"
500	2	350	1/0	3"	2-1/2"	2"
600	2	500	2/0	3-1/2"	3"	2-1/2"
700	2	750	3/0	4"	3-1/2"	3"
800	3	400	3/0	3"	3"	2-1/2"
1000	3	600	4/0	3-1/2"	3-1/2"	3"
1200	4	500	250	3-1/2"	3"	2-1/2"
1600	5	600	350	4"	3-1/2"	3"
2000	6	600	400	4"	3-1/2"	3"
2500	7	750	600	4"	4"	3-1/2"
3000	8	750	600	4"	4"	3-1/2"
4000	11	750	500 cu	4"	4"	3-1/2"

ABBREVIATIONS:
 Ø PHASE
 N NEUTRAL
 GND EQUIPMENT GROUNDING CONDUCTOR
 -4W FOUR WIRE + GROUND (3Ø,N,GND)
 -3W THREE WIRE + GROUND (3Ø,GND or 2Ø,N,GND)
 -2W TWO WIRE + GROUND

NOTES:
 1. CONDUCTOR AMPACITIES ARE BASED ON NEC TABLE 310.15(B)(16).
 2. CONDUIT SIZES ARE BASED ON A MAXIMUM FILL RATIO OF 40%.
 3. SCHEDULE SHALL BE USED FOR FEEDERS AND BRANCH CIRCUITS WHERE APPLICABLE.
 4. ALL FEEDERS AND BRANCH CIRCUITS SHALL INCLUDE AN EQUIPMENT GROUNDING CONDUCTOR. SCHEDULE IS VALID FOR TYPE THHN, THWN-2, AND XHHW-2 CONDUCTORS. SEE SPECIFICATIONS FOR CONDUCTOR TYPES REQUIRED.
 5. SCHEDULE IS VALID FOR TYPE EMT, IMC, FMC, LFMC, HDPE, AND RNC-40 RACEWAYS. SEE SPECIFICATIONS FOR RACEWAY APPLICATIONS. OPTIONAL CONFIGURATIONS (1 OR 2 SETS) ARE GIVEN FOR SOME SIZES LISTED.
 6. USE A COPPER GROUNDING CONDUCTOR FOR THE 4000 AMP FEEDER AS LISTED ABOVE.
 7. NOT ALL SIZES USED.

ONE LINE DIAGRAMS
E5.1 NO SCALE



NOT FOR CONSTRUCTION

Robert W. Depke Juvenile Center Renovation

BID SET
08/20/2024
REVISIONS

22-22114-00
ELECTRICAL DIAGRAMS

E5.1

1

2

3

4

5

Model: 2022-09-14 14:00 Depke Juv Justice-Fin 2 Expansions_Renov 22-22114-00_Depke Juv Justice-Fin 2 Expansions_Renov MEP_2022.rvt
7/26/2024 10:27:17 AM

LUMINAIRE SCHEDULE

NOTES:
 1. ALL FIXTURES SHALL BE ORDERED WITH M-VOLT (120/277V) CONNECTIVITY.
 2. ALL FIXTURES SHALL BE 0-10V DIMMABLE TYPE.
 3. PROVIDE EMERGENCY RELAY FOR FIXTURES WHICH ARE TIED INTO EM CIRCUIT AND CONTROLLED VIA LOCAL SWITCH OR OCCUPANCY SENSOR SUCH THAT THEY OPERATE WITH NORMAL CIRCUITED FIXTURES WITH-IN ROOM.

Type	Manufacturer	Model	Electrical Data	Description
DL1	LITHONIA	EVO SERIES	120 V11-14 VA	4" RECESSED LED DOWNLIGHT, 2000 LUMENS, 3500K, MULTIVOLT, 1-10V DIM, INTEGRAL DRIVER, 85 CRI
DL3	LITHONIA	WF4 ADJ 30K 90CRI MW	120 V11-14 VA	SLIP-RESISTANT RECESSED LED DOWNLIGHT
EL1	GARDCO	121 2 SOLA NW UNIV BRP F	120 V11-45 VA	LED EXTERIOR WALL SCONCE DIE-CAST ALUMINUM HOUSING, UL LISTED FOR WET LOCATIONS, TYPE II MEDIUM-THROW DISTRIBUTION.
PL1	PRUDENTIAL LIGHTING	BI02-LIN-LED340-4-LO-MBW-D1	120 V11-18 VA	LINEAR PENDANT 2" WIDE 4" BATHING
PL2	PRUDENTIAL LIGHTING	BI02-LIN-LED340-8-LO-MBW-D1CW	120 V11-38 VA	LINEAR PENDANT 2" WIDE 8" BATHING/CEILING WASH
PL5	PRUDENTIAL LIGHTING	BI02-LIN-LED340-12-LO-MBW-D1CW	120 V11-54 VA	LINEAR PENDANT 2" WIDE 12" BATHING/CEILING WASH
PL7	PRUDENTIAL LIGHTING	BI02-LIN-LED340-16-LO-MBW-D1CW	120 V11-74 VA	LINEAR PENDANT 2" WIDE 16" BATHING/CEILING WASH
PL8	PRUDENTIAL LIGHTING	BI02-LIN-LED340-40-LO-MBW-D1CW	120 V11-108 VA	LINEAR PENDANT 2" WIDE 40" BATHING/CEILING WASH
PL9	PRUDENTIAL LIGHTING	BI02-LIN-LED340-32-LO-MBW-D1CW	120 V11-108 VA	LINEAR PENDANT 2" WIDE 32" BATHING/CEILING WASH
PL10	PRUDENTIAL LIGHTING	MMW-LED27-90-R20-YGW-SC-UNV-CA-48-X3-DM1	120 V11-108 VA	LINEAR PENDANT WALL WASH
PL11	PRUDENTIAL LIGHTING	MMW-LED27-90-R24-YGW-SC-UNV-CA-48-X3-DM1	120 V11-108 VA	LINEAR PENDANT WALL WASH
PLA	EUREKA	4049 - 10 SCOUT 10"	120 V11-0 VA	PENDANT LED, 3500K, 120V, MEDIUM DIST, CLEAR LENS, CABLE MOUNTED, 0-10V DIM
PLB	EUREKA	4049 - 6 SCOUT 6"	120 V11-0 VA	PENDANT LED, 3500K, 120V, MEDIUM DIST, CLEAR LENS, CABLE MOUNTED, 0-10V DIM
RL1	LITHONIA	2RTL4 SERIES	120 V11-38 VA	RECESSED GRID LED 4000K 4000LM VOLUMETRIC FIXTURE 0-10V DIMMABLE MVOLT
RL2	LITHONIA	2ATNG28	120 V11-58 VA	RECESSED GRID 2X2 LED 3000 LUMEN FIXTURE
RL2	LITHONIA	2RTL4 SERIES	120 V11-38 VA	RECESSED GRID LED 4000K 2000LM VOLUMETRIC FIXTURE 0-10V DIMMABLE MVOLT
SF1	KENALL	CC4	120 V11-74 VA	SURFACE MOUNTED TAMPER RESISTANT WEDGE
SF3	MARK ARCHITECTURAL LIGHTING	SLOT 2 SERIES	120 V11-38 VA	SURFACE 1"X6" LED FIXTURE
SL1	KENALL	SD0-2-1-2 LED 40K	120 V11-74 VA	SURFACE MOUNTED TAMPER RESISTANT 2X2
SL2	LITHONIA	UCLD	120 V11-13 VA	24" UNDERCABINET LED LINKABLE FIXTURE WITH INTEGRAL SWITCH AT ONE END, WHITE
SL3	LITHONIA	ZL1N	120 V11-40 VA	LED STRIP
SL4	LITHONIA	FMVCLL	120 V11-23 VA	24" VANITY LED
SL1	LITHONIA	EDG-1-G-ELN	120 V11-10 VA	SINGLE FACE TOPIEND MOUNT EDGE LIT LED
SL2	LITHONIA	EDG-2-G-ELN	120 V11-0 VA	DUAL FACE TOPIEND MOUNT EDGE LIT LED

LUMINAIRE SCHEDULE

NOTES:
 1. ALL FIXTURES SHALL BE ORDERED WITH M-VOLT (120/277V) CONNECTIVITY.
 2. ALL FIXTURES SHALL BE 0-10V DIMMABLE TYPE.
 3. UNLESS NOTED OTHERWISE COLOR TEMP SHALL BE FINALIZED DURING SUBMITTALS.
 4. PROVIDE EMERGENCY RELAY FOR FIXTURES WHICH ARE TIED INTO EM CIRCUIT AND CONTROLLED VIA LOCAL SWITCH OR OCCUPANCY SENSOR SUCH THAT THEY OPERATE WITH NORMAL CIRCUITED FIXTURES WITH-IN ROOM.

Type	Manufacturer	Model	Electrical Data	Description
DL1	LITHONIA	EVO SERIES	120 V11-14 VA	4" RECESSED LED DOWNLIGHT, 2000 LUMENS, 3500K, MULTIVOLT, 1-10V DIM, INTEGRAL DRIVER, 85 CRI
RL1	LITHONIA	2RTL4 SERIES	120 V11-38 VA	RECESSED GRID LED 4000K 4000LM VOLUMETRIC FIXTURE 0-10V DIMMABLE MVOLT
RL3	EDGE LIGHTING	LC45C 24V 48IN D CW WH	120 V11-15 VA	9.9" X 0.9" 45 DEGREE EXTRUDED ALUMINUM HOUSING, DIFFUSER LENS, REMOTE POWER SUPPLY. PROVIDE ALL NECESSARY COMPONENTS FOR COMPLETE INSTALLATION.
WL4	LITHONIA	FMVCLL	120 V11-23 VA	24" VANITY LED
WL5	KLUZCO	BRI0 VL83824	120 V11-23 VA	LED WALL SCONCE

LUMINAIRE SCHEDULE

NOTES:
 1. ALL FIXTURES SHALL BE ORDERED WITH M-VOLT (120/277V) CONNECTIVITY.
 2. ALL FIXTURES SHALL BE 0-10V DIMMABLE TYPE.
 3. UNLESS NOTED OTHERWISE COLOR TEMP SHALL BE FINALIZED DURING SUBMITTALS.
 4. PROVIDE EMERGENCY RELAY FOR FIXTURES WHICH ARE TIED INTO EM CIRCUIT AND CONTROLLED VIA LOCAL SWITCH OR OCCUPANCY SENSOR SUCH THAT THEY OPERATE WITH NORMAL CIRCUITED FIXTURES WITH-IN ROOM.

Type	Manufacturer	Model	Electrical Data	Description
DL1	LITHONIA	EVO SERIES	120 V11-14 VA	4" RECESSED LED DOWNLIGHT, 2000 LUMENS, 3500K, MULTIVOLT, 1-10V DIM, INTEGRAL DRIVER, 85 CRI
EL1	GARDCO	121 2 SOLA NW UNIV BRP F	120 V11-45 VA	LED EXTERIOR WALL SCONCE DIE-CAST ALUMINUM HOUSING, UL LISTED FOR WET LOCATIONS, TYPE II MEDIUM-THROW DISTRIBUTION.
PL7	PRUDENTIAL LIGHTING	BI02-LIN-LED340-8-LO-MBW-D1CW	120 V11-38 VA	LINEAR PENDANT 2" WIDE 8" BATHING/CEILING WASH
RL2	LITHONIA	2ATNG28	120 V11-58 VA	RECESSED GRID 2X2 LED 3000 LUMEN FIXTURE
SL2	LITHONIA	UCLD	120 V11-13 VA	24" UNDERCABINET LED LINKABLE FIXTURE WITH INTEGRAL SWITCH AT ONE END, WHITE

MECHANICAL EQUIPMENT CONNECTION SCHEDULE

NOTES:
 1. OUTDOOR SPLIT SYSTEM CONDENSING UNIT SHALL BE CONNECTED TO INDOOR UNIT.
 2. PROVIDE DUCT SMOKE DETECTION ON RETURN SIDE OF RTUS. TIE INTO FACP MONITORING CIRCUIT.
 3. PROVIDE WEATHERPROOF RECEPTACLE NEAR RTUS, AND EFS PER NEC. CONNECT TO NEAREST AVAILABLE CIRCUIT WITH AVAILABLE SPARE.
 4. REFER TO FEEDER SCHEDULE ON SHEET E5.1 FOR WIRE & CONDUIT SIZES.
 5.

ELEC ID	LOCATION		EQUIPMENT INFORMATION						CIRCUIT INFORMATION						DISCONNECT TYPE	NOTES
	NO	NAME	MOTOR HP	ECM	FLA (A)	MCA (A)	MCOCP (A)	VOLT (V)	PH	PANEL	CIRCUIT NO	APPARENT LOAD (VA)	NO OF POLES	LOAD CLASS		
AIR HANDLING UNIT																
RTU-1		AREA B ROOF	5	No	63	97	80	208	3	MSA	1	22,897	3	M	80-4W	BY DIV 23
RTU-2		AREA B ROOF	2	No	34	50	70	208	3	MSA	2	8,352	3	M	70-4W	BY DIV 23
FAN																
EF-1	-	AREA B ROOF	0.07	Yes	1.3	1.6	15	120	1	L1BN	26	156	1	M	20-2W	
EF-2	-	AREA B ROOF	0.1	Yes	1.5	1.9	15	120	1	L1BN	28	180	1	M	20-2W	
EF-706	706	RES. RR	0.02	No	0.2	0.2	1.8	120	1	PP-2	29	20	1	M	15-2W	
EF-707	707	STAFF RR	0.02	No	0.2	0.2	1.8	120	1	PP-2	29	20	1	M	15-2W	
EF-708	708	STAFF RR	0.02	No	0.2	0.2	1.8	120	1	PP-2	29	20	1	M	15-2W	
SPLIT SYSTEM - CONDENSING UNIT																
OU-1		AREA B ROOF	0.2	No	12.1	14.8	25	208	1	L1BN	22,24	2,517	2	M	25-3W	
OU-2		AREA A ROOF	0.2	No	12.1	14.8	25	208	1	L3A	18,20	2,517	2	M	25-3W	
SPLIT SYSTEM - INDOOR UNIT																
IU-1	700	ENTRY VESTIBULE	0.16	No	1.8	2.3	3.2	208	1	PP-2	25,27	374	2	M	15-2W	
IU-2	03323	DATA	0.16	Yes	1.4	1.8	15	208	1	LP-2	13,15	291	2	M	15-3W	
IU-3	110B	DATA ROOM	0.16	Yes	1.4	1.8	15	208	1	L1BN	23,25	291	2	M	15-2W	

MECHANICAL EQUIPMENT CONNECTION SCHEDULE

NOTES:
 1. OUTDOOR SPLIT SYSTEM CONDENSING UNIT SHALL BE CONNECTED TO INDOOR UNIT.
 2. PROVIDE DUCT SMOKE DETECTION ON RETURN SIDE OF RTUS. TIE INTO FACP MONITORING CIRCUIT.
 3. PROVIDE WEATHERPROOF RECEPTACLE NEAR RTUS, AND EFS PER NEC. CONNECT TO NEAREST AVAILABLE CIRCUIT WITH AVAILABLE SPARE.
 4. REFER TO FEEDER SCHEDULE ON SHEET E5.1 FOR WIRE & CONDUIT SIZES.
 5.

ELEC ID	LOCATION		EQUIPMENT INFORMATION						CIRCUIT INFORMATION						DISCONNECT TYPE	NOTES
	NO	NAME	MOTOR HP	ECM	FLA (A)	MCA (A)	MCOCP (A)	VOLT (V)	PH	PANEL	CIRCUIT NO	APPARENT LOAD (VA)	NO OF POLES	LOAD CLASS		
EDIT																
AC-1	522	THERAPIST OFFICE	1	No	26.7	33.4	15	208	1	LP-2	21,23,25	5,000	3	M	(none)	
FAN																
EF-3	-	ROOF	0.1	Yes	1.5	1.9	15	120	1	LP-1	30	180	1	M	15-2W	BY DIV 23
EF-4	-	ROOF	0.1	Yes	1.5	1.9	15	120	1	LP-2	9	180	1	M	15-2W	BY DIV 23
EF-502	502A	ADA TOILET	0.03	No	0.2	0.2	15	120	1	LP-1	1	22	1	M	15-2W	SW
EF-503	503A	TOILET	0.03	No	0.2	0.2	15	120	1	LP-1	3	22	1	M	15-2W	SW
EF-504	504A	TOILET	0.03	No	0.2	0.2	15	120	1	LP-1	5	22	1	M	15-2W	SW
EF-509	509A	TOILET	0.03	No	0.2	0.2	15	120	1	LP-1	15	22	1	M	15-2W	SW
EF-510	510A	TOILET	0.03	No	0.2	0.2	15	120	1	LP-1	17	22	1	M	15-2W	SW
EF-511	511A	TOILET	0.03	No	0.2	0.2	15	120	1	LP-1	19	22	1	M	15-2W	SW
EF-515	515A	ADA TOILET	0.03	No	0.2	0.2	15	120	1	LP-1	21	22	1	M	15-2W	SW
EF-516	516A	TOILET	0.03	No	0.2	0.2	15	120	1	LP-1	23	22	1	M	15-2W	SW
EF-517	517A	TOILET	0.03	No	0.2	0.2	15	120	1	LP-1	25	22	1	M	20-2W	SW
EF-519	519	TOILET	0.02	No	0.2	0.2	15	120	1	LP-1	29	20	1	M	20-2W	SW
EF-520	520	TOILET	0.02	No	0.2	0.2	15	120	1	LP-1	29	20	1	M	20-2W	SW
WATER HEATER																
WH-1			0	No	0	0	15	120	1	LP-1	4	0	1	M	15-2W	CB

MECHANICAL EQUIPMENT CONNECTION SCHEDULE

NOTES:
 1. OUTDOOR SPLIT SYSTEM CONDENSING UNIT SHALL BE CONNECTED TO INDOOR UNIT.
 2. PROVIDE DUCT SMOKE DETECTION ON RETURN SIDE OF RTUS. TIE INTO FACP MONITORING CIRCUIT.
 3. PROVIDE WEATHERPROOF RECEPTACLE NEAR RTUS, AND EFS PER NEC. CONNECT TO NEAREST AVAILABLE CIRCUIT WITH AVAILABLE SPARE.
 4. REFER TO FEEDER SCHEDULE ON SHEET E5.1 FOR WIRE & CONDUIT SIZES.
 5.

ELEC ID	LOCATION		EQUIPMENT INFORMATION						CIRCUIT INFORMATION						DISCONNECT TYPE	NOTES
	NO	NAME	MOTOR HP	ECM	FLA (A)	MCA (A)	MCOCP (A)	VOLT (V)	PH	PANEL	CIRCUIT NO	APPARENT LOAD (VA)	NO OF POLES	LOAD CLASS		
FAN																
EF-206		AREA C ROOF	0.1	Yes	1.5	1.9	15	120	1	LP-2	11	180	1	M	15-2W	BY DIV 23

NOT FOR CONSTRUCTION