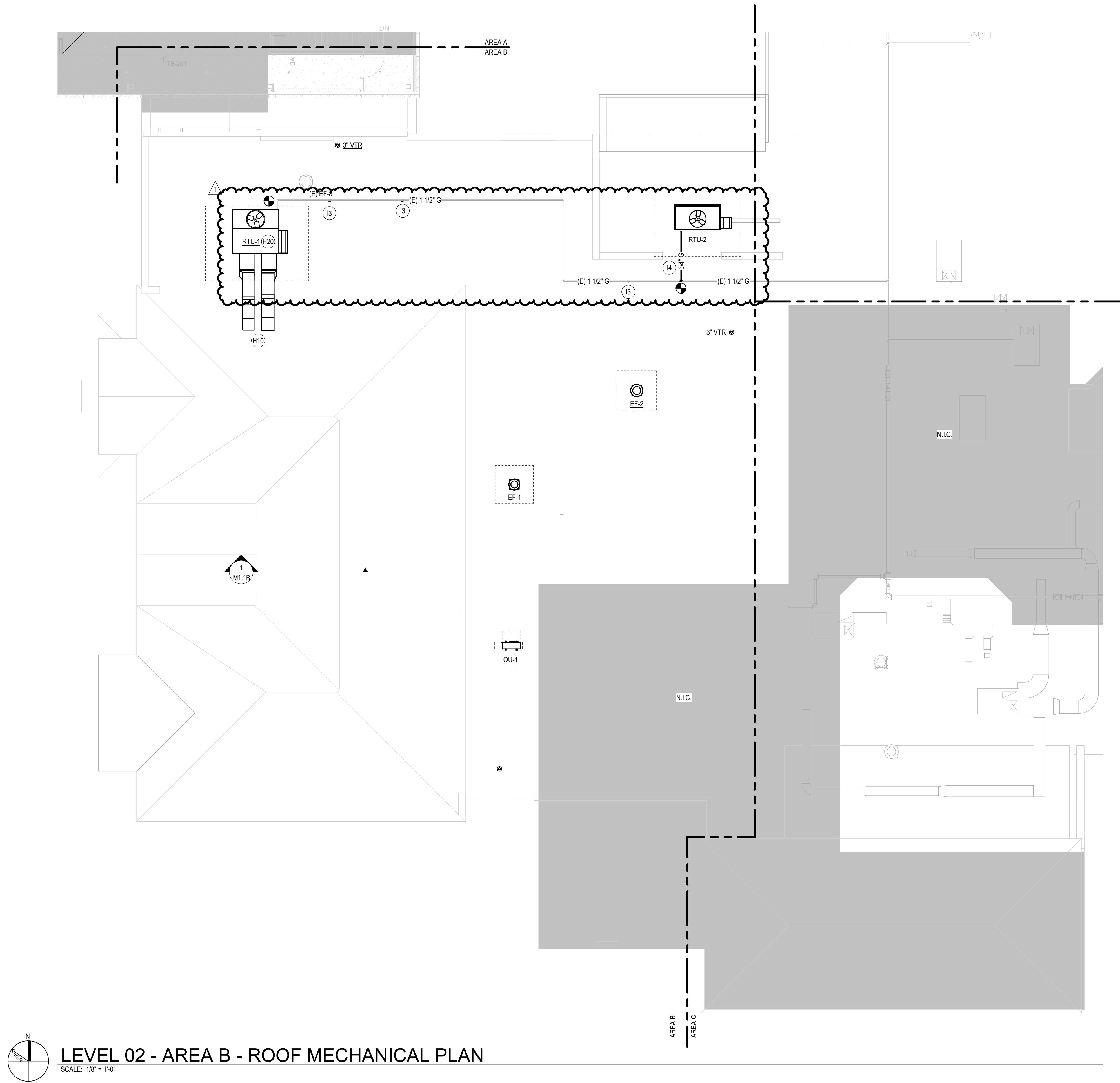
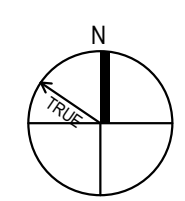


Mechanical Drawings 22-22114-00 Depke Juv Justice-Ctr 2 Expansions_Roofing/22-22114-00_Depke Juv Justice-Ctr 2
 Expansions_Roofing MEP_2022.rvt
 7/26/2024 2:12:20 PM




LEVEL 02 - AREA B - ROOF MECHANICAL PLAN
 SCALE: 1/8" = 1'-0"

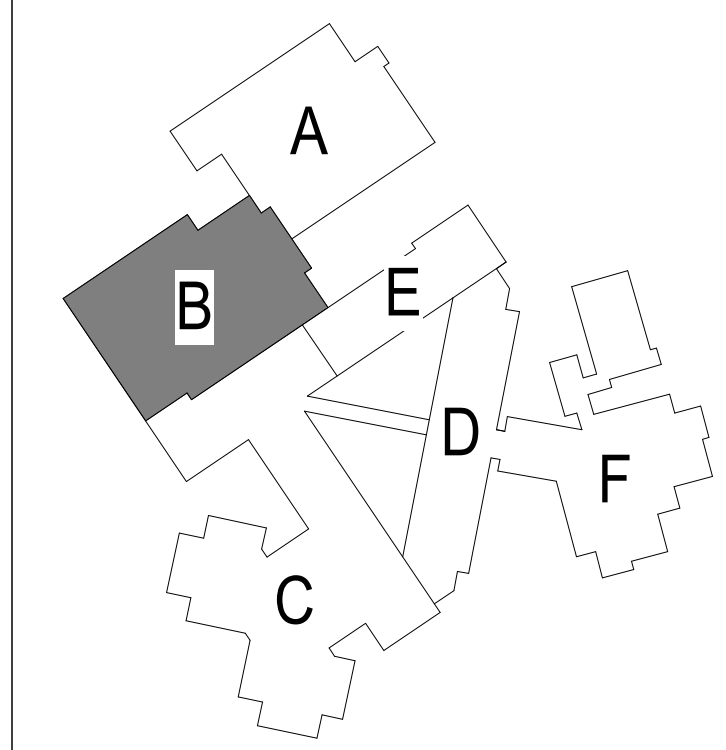
GENERAL NOTES

- A FOR SYMBOLS AND ABBREVIATIONS SEE DRAWING FPM0.1
- B FOR GENERAL NOTES OF ALL TRADES SEE DRAWING FPM0.2

SHEET NOTES

- H10 SUPPLY AND RETURN DUCTWORK THROUGH SLOPED ROOF
- H20 LOCATE AND ORIENT UNIT TO MAINTAIN MINIMUM 12" SEPARATION BETWEEN NEARBY EXHAUST AND VTR TO OUTSIDE AIR INLET.
- I3 REMOVE EXISTING GAS PIPING REMOVED ROOFTOP UNITS BACK TO TEE AND CAP.
- I4 ROUTE NEW GAS PIPING TO RTU-2. MATCH CONNECTION SIZE TO UNIT.

KEY PLAN



NOT FOR CONSTRUCTION

Robert W. Depke Juvenile Center Renovation

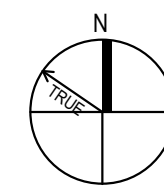
24857 North Milwaukee Avenue
 Vernon Hills, Illinois 60061

BID SET
 08/20/2024
 REVISIONS
 1 ADDENDUM #3 7.29.2024

22-22114-00
 LEVEL 02 - AREA B - HVAC ROOF PLAN

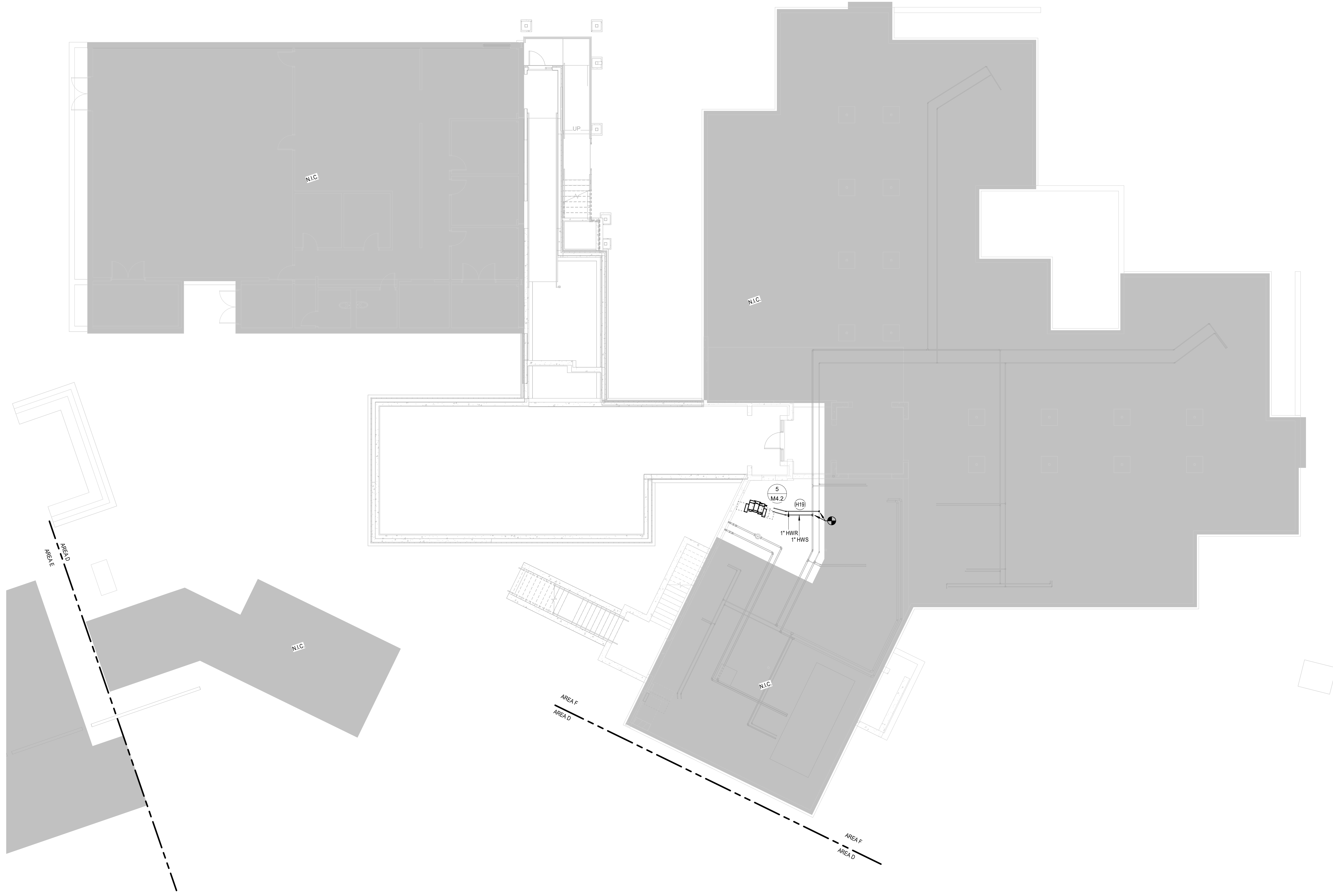
M1.2B

22-22114-00_Depke Juv Justice-Ctr 2
Expansions_Renovlly222114-00_Depke Juv Justice-Ctr 2
Expansions_Renovlly222114-00_Depke Juv Justice-Ctr 2
Expansions_Renovlly222114-00_Depke Juv Justice-Ctr 2



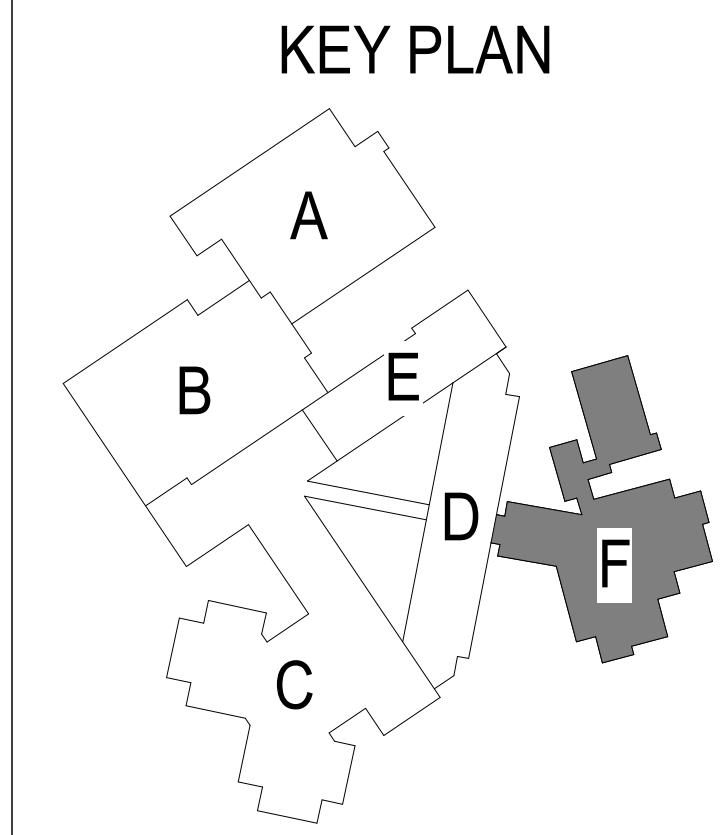
BASEMENT - MECHANICAL PIPING PLAN

SCALE: 1/8" = 1'-0"



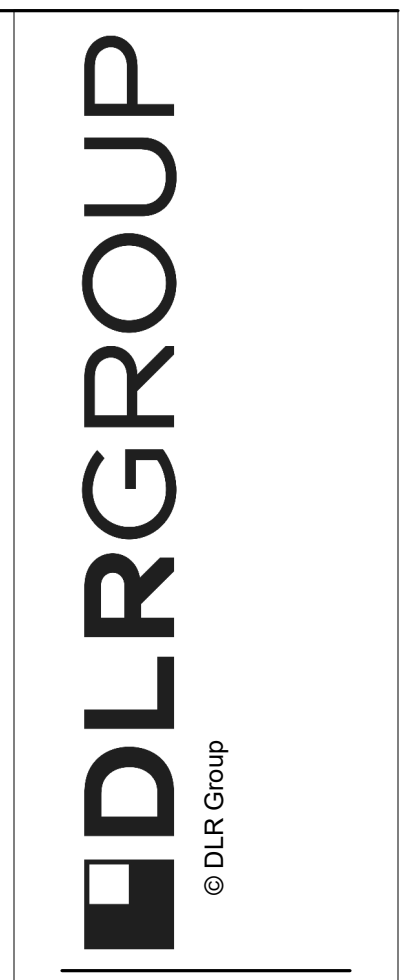
SHEET NOTES

H19 ROUTE NEW 1" HWS/R PIPING TO NEW VAVS. COORDINATE EXACT CONNECTION POINT WITH GECS AHU REPLACEMENT DRAWINGS. PROVIDE REHEAT COIL TRIM AS DETAILED IN S1M4.2



22-22114-00
LEVEL 00 - AREA F
- HVAC PIPING
PLAN

M2.0F



NOT FOR CONSTRUCTION

Robert W. Depke Juvenile Center Renovation

24857 North Milwaukee Avenue
Vernon Hills, Illinois 60061

BID SET
08/20/2024
REVISIONS
1 ADDENDUM #3 7.29.2024

FAN SCHEDULE - PHASE II

NOTES:
1.
2.
3.
4.
5.

ID	LOCATION			TYPE	DESCRIPTION	FAN DATA						SOUND PRESS LEVEL (dBA)	ELECTRICAL DATA				WEIGHT (LBS)	BASIS OF DESIGN		NOTES			
	NO	NAME	AREA SERVED			AIR FLOW (CFM) DESIGN	ESP (IN WG)	RPM	DRIVE TYPE	MOTOR				FLA (A)	MCA (A)	MOCOP (A)		VOLT (V)	PH		MANUFACTURER	MODEL	
										QTY	HP		RPM										ECM
EF-3	-	ROOF	AREA D	DOWNBLAST	CENTRIFUGAL	350	0.3	1549	DIRECT	1	1549	Yes	55	1.5	1.9	15	120	1	27	GREENHECK	G-080-E		
EF-4	-	ROOF	AREA E	DOWNBLAST	CENTRIFUGAL	300	0.2	1298	DIRECT	1	1298	Yes	50	1.5	1.9	15	120	1	27	GREENHECK	G-080-E		
EF-502	502A	ADA TOILET	AREA D	CEILING EXHAUST	AXIAL	100	0.25	1100	DIRECT	1	0.03	1100	No	30	0.2	0.2	15	120	1	25	GREENHECK	SP-A125	
EF-503	503A	TOILET	AREA D	CEILING EXHAUST	AXIAL	100	0.25	1100	DIRECT	1	0.03	1100	No	30	0.2	0.2	15	120	1	25	GREENHECK	SP-A125	
EF-504	504A	TOILET	AREA D	CEILING EXHAUST	AXIAL	100	0.25	1100	DIRECT	1	0.03	1100	No	30	0.2	0.2	15	120	1	25	GREENHECK	SP-A125	
EF-509	509A	TOILET	AREA D	CEILING EXHAUST	AXIAL	100	0.25	1100	DIRECT	1	0.03	1100	No	30	0.2	0.2	15	120	1	25	GREENHECK	SP-A125	
EF-510	510A	TOILET	AREA D	CEILING EXHAUST	AXIAL	100	0.25	1100	DIRECT	1	0.03	1100	No	30	0.2	0.2	15	120	1	25	GREENHECK	SP-A125	
EF-511	511A	TOILET	AREA D	CEILING EXHAUST	AXIAL	100	0.25	1100	DIRECT	1	0.03	1100	No	30	0.2	0.2	15	120	1	25	GREENHECK	SP-A125	
EF-515	515A	ADA TOILET	AREA D	CEILING EXHAUST	AXIAL	100	0.25	1100	DIRECT	1	0.03	1100	No	30	0.2	0.2	15	120	1	25	GREENHECK	SP-A125	
EF-516	516A	TOILET	AREA D	CEILING EXHAUST	AXIAL	100	0.25	1100	DIRECT	1	0.03	1100	No	30	0.2	0.2	15	120	1	25	GREENHECK	SP-A125	
EF-517	517A	TOILET	AREA D	CEILING EXHAUST	AXIAL	100	0.25	1100	DIRECT	1	0.03	1100	No	30	0.2	0.2	15	120	1	25	GREENHECK	SP-A125	
EF-519	519	TOILET	AREA D	CEILING EXHAUST	AXIAL	75	0.25	900	DIRECT	1	0.02	900	No	27	0.2	0.2	15	120	1	20	GREENHECK	SP-A90	
EF-520	520	TOILET	AREA D	CEILING EXHAUST	AXIAL	75	0.25	900	DIRECT	1	0.02	900	No	27	0.2	0.2	15	120	1	20	GREENHECK	SP-A90	

GRILLES, REGISTERS AND DIFFUSERS SCHEDULE - PHASE II

NOTES:
1. SEE PLANS FOR NECK DIAMETER.
2. SEE PLANS FOR CORE SIZE.
3. PAINT TO MATCH ADJACENT SURFACE.

ID	DESCRIPTION	MATERIAL	FINISH	SYSTEM	FACE		SPACING	BLADE DESIGN		ORIENTATION	INSTALLATION	MAX NC	BASIS OF DESIGN		NOTES
					WIDTH / DIA	HEIGHT		DEFLECTION ANGLE SINGLE	DOUBLE				BORDER TYPE	MANUFACTURER	
D-1	PLAQUE FACE DIFFUSER	STEEL	WHITE ENAMEL	SA	24"	24"					TYPE 3 (LAY-IN)		TITUS	OMNI	1
D-2	PLAQUE FACE DIFFUSER	STEEL	WHITE ENAMEL	SA	<varies>	<varies>					<varies>		TITUS	OMNI	1
RG-1	EGGCRATE RETURN GRILLE	ALUMINUM	WHITE ENAMEL	RA	24"	<varies>	1/2"	0.0"		GRID	TYPE 3 (LAY-IN)		TITUS	SOF	2
EG-2	EGGCRATE RETURN GRILLE	ALUMINUM	WHITE ENAMEL	EA	9 3/4"	<varies>	1/2"	0.0"	0.0"	GRID	TYPE 1 (SURFACE)		TITUS	SOF	
EG-3	EGGCRATE RETURN GRILLE	ALUMINUM	WHITE ENAMEL	EA	12"	12"	1/2"	0.0"	0.0"	GRID	TYPE 3 (LAY-IN)		TITUS	SOF	

LINEAR SLOT DIFFUSER SCHEDULE - PHASE II

ID	DESCRIPTION	MATERIAL	FINISH	SYSTEM	LINEAR DIFFUSER				NECK		THROW SYMBOL	INSTALLATION	OPTIONS	BASIS OF DESIGN		NOTES			
					SLOT		PLENUM		ROUND	TYPE				BORDER TYPE	DAMPER DESCRIPTION		MANUFACTURER	MODEL	
					WIDTH	QTY	INSULATED	LOW PROFILE		OVAL									ROUND
D-7	LINEAR SLOT DIFFUSER	ALUMINUM	WHITE ENAMEL	SA	1"	1	Yes	Yes	6"	Oval	Round	No	Yes	H	DEFAULT	---	TITUS	FL-10	

GRILLES, REGISTERS AND DIFFUSERS SCHEDULE - PHASE III

NOTES:
1. SEE PLANS FOR NECK SIZE.
2. SEE PLANS FOR CORE SIZE.
3. PAINT TO MATCH ADJACENT SURFACE.

ID	DESCRIPTION	MATERIAL	FINISH	SYSTEM	FACE			BLADE DESIGN			INSTALLATION	MAX NC	BASIS OF DESIGN		NOTES
					WIDTH / DIA	HEIGHT	SPACING	DEFLECTION ANGLE SINGLE	DOUBLE	ORIENTATION			BORDER TYPE	MANUFACTURER	
D-1	PLAQUE FACE DIFFUSER	STEEL	WHITE ENAMEL	SA	<varies>	<varies>	<varies>	<varies>	<varies>	<varies>	TYPE 3 (LAY-IN)		TITUS	OMNI	1
D-3	LOUVERED SINGLE DEFLECTION GRILLE	STEEL	WHITE ENAMEL	SA	<varies>	7 3/4"	3/4"	0.0"	0.0"	LONG	TYPE 1 (SURFACE)		TITUS	301RL	2, 3
D-8	SUPPLY REGISTER	STEEL	WHITE ENAMEL	SA	7 5/8"	7 5/8"	3/4"	0.0"	0.0"	SHORT	TYPE 1 (SURFACE)		TITUS	300RS	2, 3
RG-1	EGGCRATE RETURN GRILLE	ALUMINIUM	WHITE ENAMEL	RA	24"	<varies>	1/2"	0.0"		GRID	TYPE 3 (LAY-IN)		TITUS	50F	2
EG-1	EGGCRATE RETURN GRILLE	ALUMINIUM	WHITE ENAMEL	EA	24"	24"	1/2"	0.0"		GRID	TYPE 3 (LAY-IN)		TITUS	50F	
EG-2	EGGCRATE RETURN GRILLE	ALUMINIUM	WHITE ENAMEL	EA	7 3/4"	7 3/4"	1/2"	0.0"	0.0"	GRID	TYPE 1 (SURFACE)		TITUS	50F	
EG-4	LOUVERED GRILLE	STEEL	WHITE ENAMEL	EA	7 3/4"	7 3/4"	3/4"	35.0"	0.0"	LONG	TYPE 1 (SURFACE)	25	TITUS	359RL	

LINEAR SLOT DIFFUSER SCHEDULE - PHASE III

ID	DESCRIPTION	MATERIAL	FINISH	SYSTEM	LINEAR DIFFUSER			NECK	THROW SYMBOL	INSTALLATION	BASIS OF DESIGN		NOTES	
					SLOT WIDTH	PLENUM QTY	INSULATED				LOW PROFILE	ROUND		BORDER TYPE
D-7	LINEAR SLOT DIFFUSER	ALUMINIUM	WHITE ENAMEL	SA	1"	1	<varies>	Yes	Yes	6"	H	DEFAULT	TITUS	FL-10
D-7	LINEAR SLOT DIFFUSER	ALUMINIUM	WHITE ENAMEL	SA	1"	2	4" - 0"	Yes	Yes	8"	H	DEFAULT	TITUS	FL-10
RG-1	LINEAR SLOT DIFFUSER	ALUMINIUM	WHITE ENAMEL	RA	1"	1	4" - 0"	No		8"		DEFAULT	TITUS	FL-10

FAN SCHEDULE - PHASE III

NOTES:
1.
2.
3.
4.
5.

ID	LOCATION			AREA SERVED	TYPE	FAN DATA										SOUND PRESS LEVEL (dBA)	ELECTRICAL DATA					BASIS OF DESIGN		NOTES
	NO	NAME				DESCRIPTION	AIR FLOW (CFM) DESIGN	ESP (IN WG)	RPM	DRIVE TYPE	QTY	MOTOR HP	RPM	ECM	FLA (A)		MCA (A)	MOCOP (A)	VOLT (V)	PH	WEIGHT (LBS)	MANUFACTURER	MODEL	
EF-1	-	AREA B ROOF	ADMIN	DOWNBLAST	CENTRIFUGAL	200	0.25	1373	DIRECT	1	1373	Yes	43	1.3	1.6	15	120	1	20	GREENHECK	G-07L-VG			
EF-2	-	AREA B ROOF	BOOKING	DOWNBLAST	CENTRIFUGAL	450	0.3	1322	DIRECT	1	1322	Yes	50	1.5	1.9	15	120	1	28	GREENHECK	G-090-VG			

VARIABLE AIR VOLUME TERMINAL UNIT SCHEDULE - PHASE III

1. ALL PERFORMANCE BASED ON TESTS CONDUCTED IN ACCORDANCE WITH ASHRAE 130-2008 AND AHRI 880-2011
 2. WATER COIL PERFORMANCE IS RATED AND CERTIFIED IN ACCORDANCE WITH THE LATEST EDITION OF AHRI STANDARD 410.
 3. ALL AIRFLOW, PRESSURE LOSSES AND HEATING PERFORMANCE VALUES HAVE BEEN CORRECTED FOR THE PROJECT SITE ALTITUDE.
 4. COIL AIR PRESSURE DROP SHOWN IS FOR MAX CFM.
 5. NC VALUES ARE CALCULATED BASED ON PROCEDURES OUTLINED IN AHRI STANDARD 885-2008, "A PROCEDURE FOR ESTIMATING OCCUPIED SPACE SOUND LEVELS IN THE APPLICATION OF AIR TERMINALS AND AIR OUTLETS."

ID	LOCATION			SERVED BY	TYPE	INLET (RND OR W x H)	AIRFLOW (CFM)				STATIC PRESS (IN WG)				HOT WATER HEATING COIL DATA						MAX NOISE CRITERIA (NC)		BASIS OF DESIGN		NOTES
	NO	NAME					MAX	MIN	INLET	DOWN	MIN	CAPACITY (BTUH)	HEATING AIRFLOW (CFM)	TEMP DB (°F) ENT	LVG	PRESS DROP (IN H2O)	FLOW (GPM)	TEMP (°F) ENT	LVG	PRESS DROP (FT H2O)	ROWS	RAD	DISCH	MANUFACTURER	
VAV-101	103	SALLY PORT / RELEASE	RTU-1	SINGLE DUCT	6"	700	210	1	0.25	0.32	12,293	380	55	85	0.3	2.2	130	119	0.7	2	22	28	TITUS	DESV	
VAV-102	101	WAITING	RTU-1	SINGLE DUCT	6"	500	150	1	0.25	0.64	16,176	500	55	85	0.44	1.7	130	110	0.6	3	24	25	TITUS	DESV	
VAV-104	100	PROBATION CORRIDOR	RTU-1	SINGLE DUCT	6"	265	80	1	0.25	0.15	5,392	175	55	86.7	0.1	0.6	130	110	0.2	2	17	24	TITUS	DESV	
VAV-108	100	PROBATION CORRIDOR	RTU-1	SINGLE DUCT	6"	265	80	1	0.25	0.15	6,470	200	55	85	0.1	0.7	130	110	0.2	2	17	24	TITUS	DESV	
VAV-110A	110	COURT ADMINISTRATION	RTU-1	SINGLE DUCT	6"	200	60	1	0.25	0.09	5,117	130	55	91.5	0.06	0.6	130	110	0.2	2	14	22	TITUS	DESV	
VAV-111	100	PROBATION CORRIDOR	RTU-1	SINGLE DUCT	6"	500	150	1	0.25	0.64	13,911	430	55	85	0.44	1.4	130	110	0.4	3	24	25	TITUS	DESV	
VAV-114	110	COURT ADMINISTRATION	RTU-1	SINGLE DUCT	12"	1,545	465	1	0.25	0.57	46,586	1,440	55	85	0.36	4.7	130	110	1.4	3	23	27	TITUS	DESV	
VAV-121	121	INTAKE STAFF	RTU-2	SINGLE DUCT	6"	590	175	1	0.25	0.23	10,191	315	55	85	0.22	1.1	130	110	0.4	2	20	27	TITUS	DESV	
VAV-122	122	BOOKING	RTU-2	SINGLE DUCT	6"	375	115	1	0.25	0.29	5,532	150	55	89.2	0.18	0.6	130	110	0.2	2	21	23	TITUS	DESV	
VAV-126	121	INTAKE STAFF	RTU-2	SINGLE DUCT	6"	270	85	1	0.25	0.16	5,982	175	55	86.7	0.1	0.6	130	110	0.2	2	17	24	TITUS	DESV	
VAV-132	121	INTAKE STAFF	RTU-2	SINGLE DUCT	6"	405	125	1	0.25	0.33	6,145	185	55	85.8	0.2	0.7	130	110	0.2	2	22	24	TITUS	DESV	
VAV-143	141	ADULT HOLDING	RTU-2	SINGLE DUCT	6"	190	60	1	0.25	0.06	3,224	100	55	84.9	0.03	0.5	130	110	0.2	1	13	20	TITUS	DESV	

ROOFTOP UNIT SCHEDULE - PHASE III

NOTES:
1. UNITS TO INTEGRATE INTO FACILITY BAS
 2. PROVIDE VIBRATION ISOLATION
 3. PROVIDE ROOF CURBS TO ALLOW FOR DUCT ELBOW AND HORIZONTAL EXIST AS SHOWN ON PLAN
 4. DOUBLE-WALL CASING CONSTRUCTION
 5. SINGLE POINT POWER WITH MANUFACTURER PROVIDED NON-FUSED DISCONNECT SWITCH

ID	LOCATION			SUPPLY AIR FLOW (CFM)	OUTSIDE AIR			SUPPLY FAN			EXHAUST FAN			INCLUDE POWER EXHAUST	NOMINAL CAPACITY (TON)	COOLING COIL				GAS-FIRED HX				COMPRESSOR				EFFICIENCY				ELECTRICAL DATA				BASIS OF DESIGN		NOTES									
	NO	NAME	ARRANGEMENT		FLOW (CFM)	DCV	EXT STATIC PRESS (IN WG)	DRIVE TYPE	QTY	HP	FLOW (CFM)	MOTOR HP	EXT STATIC PRESS (IN WG)			FLOW (CFM)	MOTOR HP	EXT STATIC PRESS (IN WG)	TOTAL	SENSIBLE	ENTERING	LEAVING	INCLUDE ECONOMIZER	INCLUDE HOR	INPUT (BTUH)	EFF (%)	FUEL TYPE	MIN PRESS REQD (PSI)	ENT	LVG	TYPE	CHARGE (LBS)	AMBIENT LOW KIT	SUMMER AMBIENT DB TEMP (°F)	WINTER AMBIENT DB TEMP (°F)	SEER	EER		AFUE (%)	PRE-FILTER	FILTER	SEACOAST PROT	FLA (A)	MCA (A)	MOCOP (A)	VOLT (V)	PH
RTU-1	AREA B ROOF	DOWNFLOW	3,910	870	No	2.8	DIRECT	1	5	3910	3	1.65	Yes	11	128,300	104,300	79.5	65.2	56.5	54.9	Yes	Yes	195	80	NG	2	56.1	93.4	R-454B	13	No	91	0	18.72	14.01	0	MERV 8	MERV 14	No	63	67	80	208	3	2,031	AAON	RN011
RTU-2	AREA B ROOF	DOWNFLOW	1,820	610	Yes	1.85	DIRECT	1	2	1820	3	0.47	Yes	6	70,400	53,400	81.7	66.8	55.6	54.4	Yes	Yes	90	81	NG	2	46.5	84	R-454B	0	No	91	0	14.8	12.84	0	MERV 8	MERV 14	No	44	50	70	208	3	1,328	AAON	RN008

SPLIT SYSTEM CONDENSING UNIT SCHEDULE - PHASE III

NOTES:
1.
2.
3.
4.
5.

ID	LOCATION			COMPRESSOR DATA				AMBIENT TEMP DB (°F)				ELECTRICAL DATA				INDOOR UNIT ID	WEIGHT (LBS)	BASIS OF DESIGN		NOTES
	NAME	CAPACITY (TON)	TYPE	REFRIGERANT	CHARGE (LBS)	QTY	HP	SUMMER	WINTER	FLA (A)	MCA (A)	MOCOP (A)	VOLT (V)	PH	MANUFACTURER			MODEL		
OU-1	AREA B ROOF	1.5	SCROLL	R-407C	0.25	1	0.2	95	0	12.1	14.8	25	208	1	IU-1	200	LIEBERT	PFH020A-PLN		

SPLIT SYSTEM AIR CONDITIONER SCHEDULE - PHASE III

NOTES:
1.
2.
3.
4.
5.

ID	LOCATION			TYPE	COOLING COIL DATA				ELECTRICAL DATA				OUTDOOR UNIT ID	WEIGHT (LBS)	BASIS OF DESIGN		NOTES
	NO	NAME			NOMINAL CAPACITY (TON)	TOTAL CAPACITY (BTUH)	EAT (°F) DB	WB	FLA (A)	MCA (A)	MOCOP (A)	VOLT (V)			PH	MANUFACTURER	
IU-3	110B	DATA ROOM	DUCTLESS SPLIT	2	18,000	72	60	1.4	1.8	15	208	1	OU-3	230	LIEBERT	DME020E	

Michael P. ...
 Expansions, ...
 7/20/2024

GRILLES, REGISTERS AND DIFFUSERS SCHEDULE - PHASE IV

NOTES:
 1. SEE PLANS FOR NECK SIZE
 2. SEE PLANS FOR CORE SIZE.

ID	DESCRIPTION	MATERIAL	FINISH	SYSTEM	FACE			BLADE DESIGN			INSTALLATION	MAX NC	BASIS OF DESIGN		NOTES
					WIDTH / DIA	HEIGHT	SPACING	DEFLECTION ANGLE		ORIENTATION			BORDER TYPE	MANUFACTURER	
						SINGLE	DOUBLE								
D-1	PLAQUE FACE DIFFUSER	STEEL	WHITE ENAMEL	SA	24"	24"					TYPE 3 (LAY-IN)		TITUS	OMNI	1
D-2	PLAQUE FACE DIFFUSER	STEEL	WHITE ENAMEL	SA	24"	24"					TYPE 1 (SURFACE)		TITUS	OMNI	1
RG-1	EGGCRATE RETURN GRILLE	ALUMINUM	WHITE ENAMEL	RA	24"	24"	1/2"	0.0"			GRID		TITUS	50F	2
EG-2	EGGCRATE RETURN GRILLE	ALUMINUM	WHITE ENAMEL	EA	24"	24"	1/2"	0.0"	0.0"		GRID		TITUS	50F	

FAN SCHEDULE - PHASE IV

NOTES:
 1.
 2.
 3.
 4.
 5.

ID	LOCATION		AREA SERVED	TYPE	FAN DATA												SOUND PRESS LEVEL (dB)	ELECTRICAL DATA					WEIGHT (LBS)	BASIS OF DESIGN		NOTES
	NO	NAME			DESCRIPTION	AIR FLOW (CFM)	ESP (IN WG)	RPM	DRIVE TYPE	MOTOR				FLA (A)	MCA (A)	MOCP (A)		VOLT (V)	PH	MANUFACTURER	MODEL					
						DESIGN				QTY	HP	RPM	ECM													
EF-206		AREA C ROOF	LOCKER & CHANGING	DOWNBLAST	CENTRIFUGAL	375	0.25	1158	DIRECT	1	1	1158	Yes	47	1.5	1.9	15	120	1	28	GREENHECK	G-090-VG				



NOT FOR CONSTRUCTION

Robert W. Depke Juvenile Center Renovation

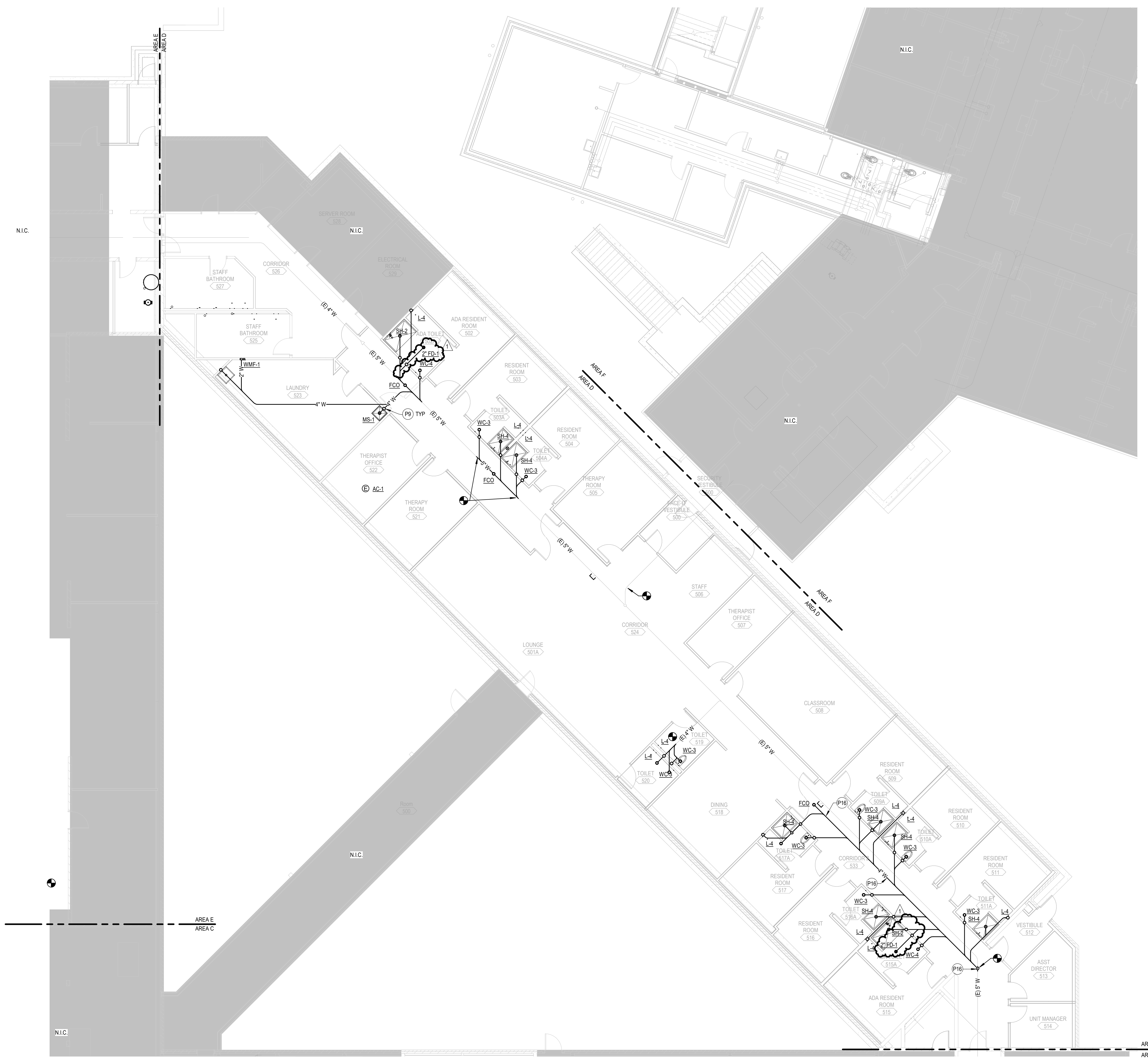
24857 North Milwaukee Avenue
 Vernon Hills, Illinois 60061

BID SET
 08/20/2024
 REVISIONS
 1 ADDENDUM #3 7.29.2024

22-22114-00
 MECHANICAL
 SCHEDULES -
 PHASE IV

M8.4

Model: P:\2024\2024-01-14-03 Depke Juv Justice-CM - 2 Expansions_Rvdlly\22-2114-00_Depke Juv Justice-P1.2
 Expansions_Rvdlly\22-2114-00_Depke Juv Justice-MEP_2024.rvt
 7/26/2024 12:26:13 PM



LEVEL 01 - AREA D - PLUMBING UNDERGROUND PLAN
 SCALE: 1/8" = 1'-0"

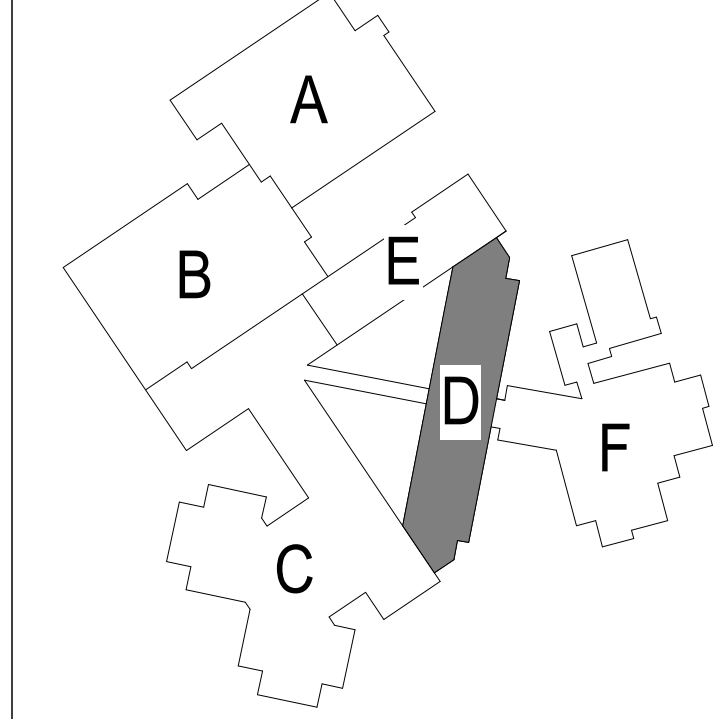
GENERAL NOTES

- A GENERAL NOTE 1
- B GENERAL NOTE 2

SHEET NOTES

P9 VENT UP. SEE P2.1D FOR CONTINUATION
 P16 INSTALL NEW SANITARY LINE IN CORRIDOR AS SHOWN.
 CONNECT DOWNSTREAM OF PREVIOUS FIXTURE
 CONNECTIONS AT SINGLE LOCATION TO MINIMIZE
 INTERRUPTION TO BUILDING OPERATIONS.

KEY PLAN



NOT FOR CONSTRUCTION.

Robert W. Depke Juvenile Center Renovation

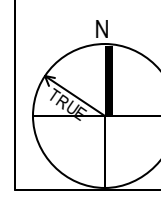
24857 North Milwaukee Avenue
 Vernon Hills, Illinois 60061

BID SET
 08/20/2024
 REVISIONS
 1 ADDENDUM #3 7.29.2024

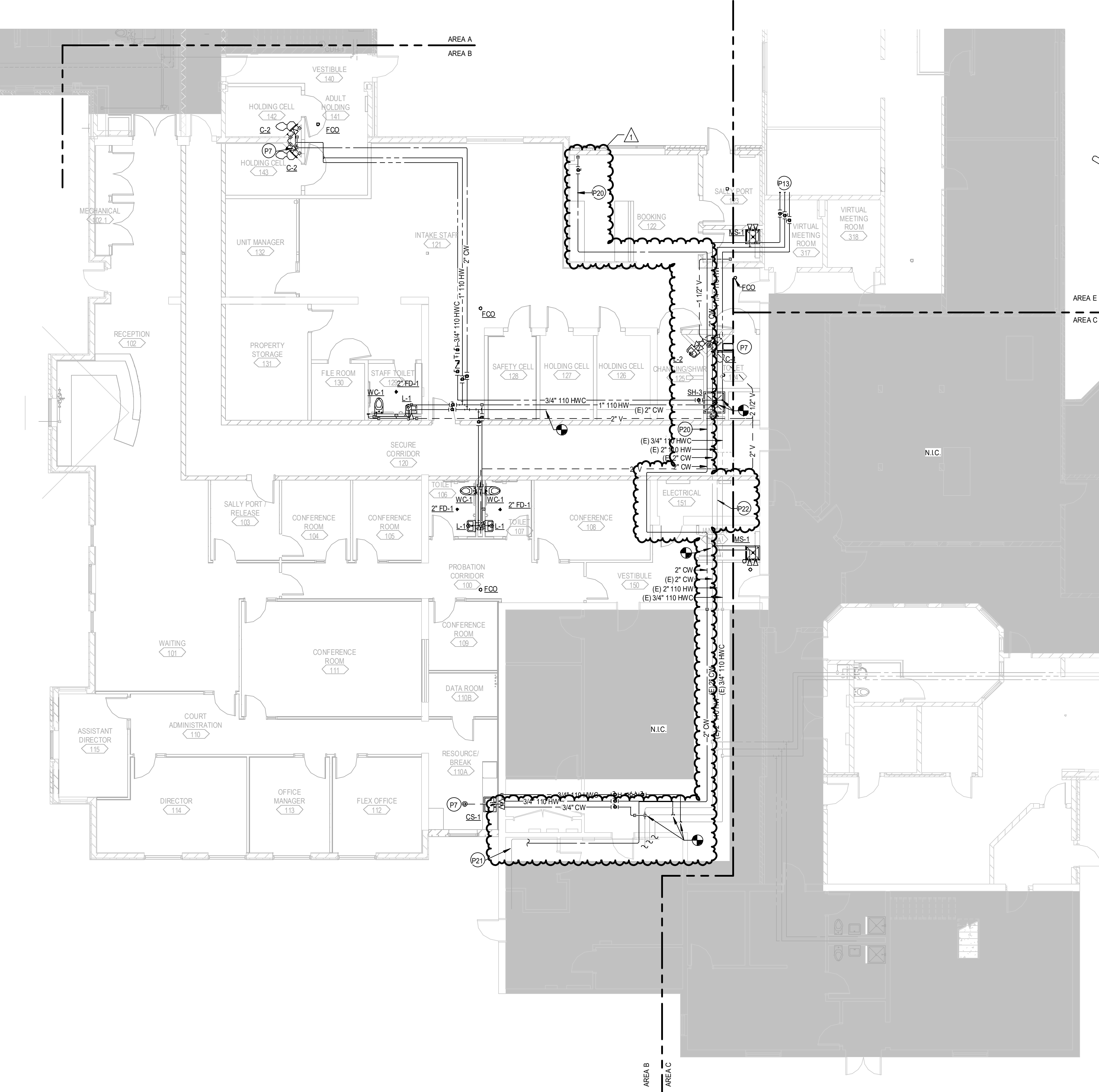
22-2114-00
 LEVEL 0 - AREA D
 - UNDERGROUND
 PLUMBING PLAN

P1.1D

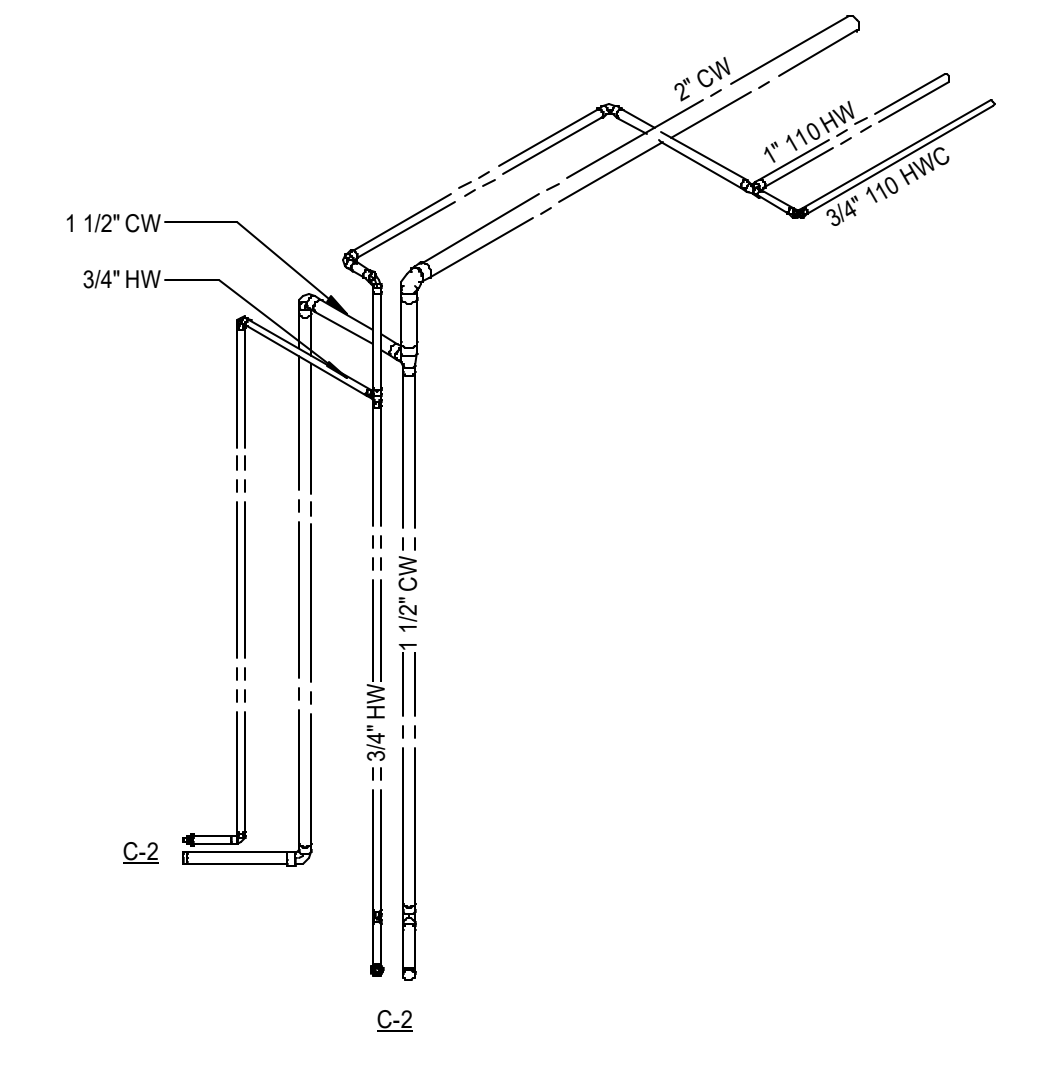
Michael P. ... 22-22114-00_Depke Juv Justice-Ctr 2
 Expansions, Remodeling, MEP, 2022, N/A
 7/26/2024 2:11:10 PM



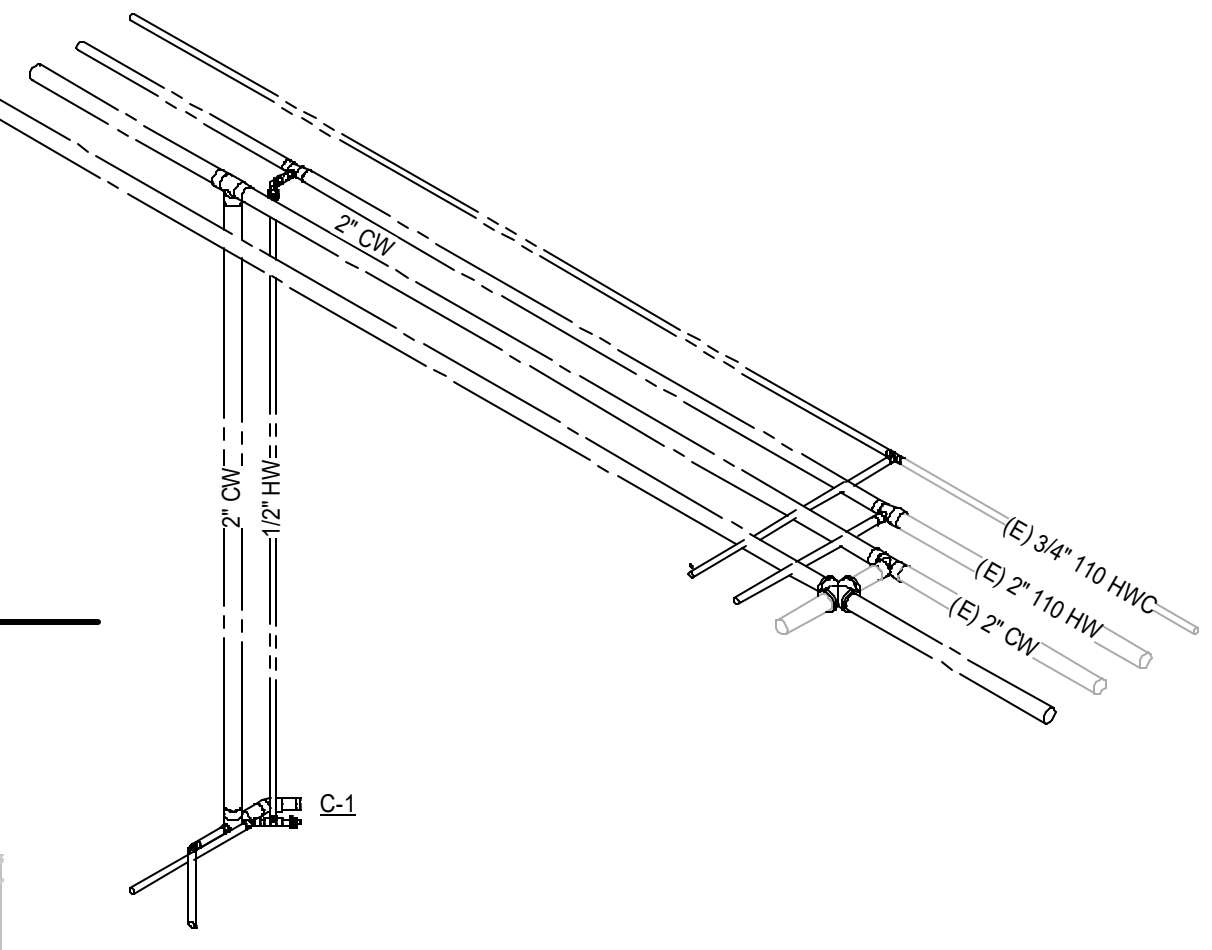
LEVEL 01 - AREA B - PLUMBING PLAN
SCALE: 1/8" = 1'-0"



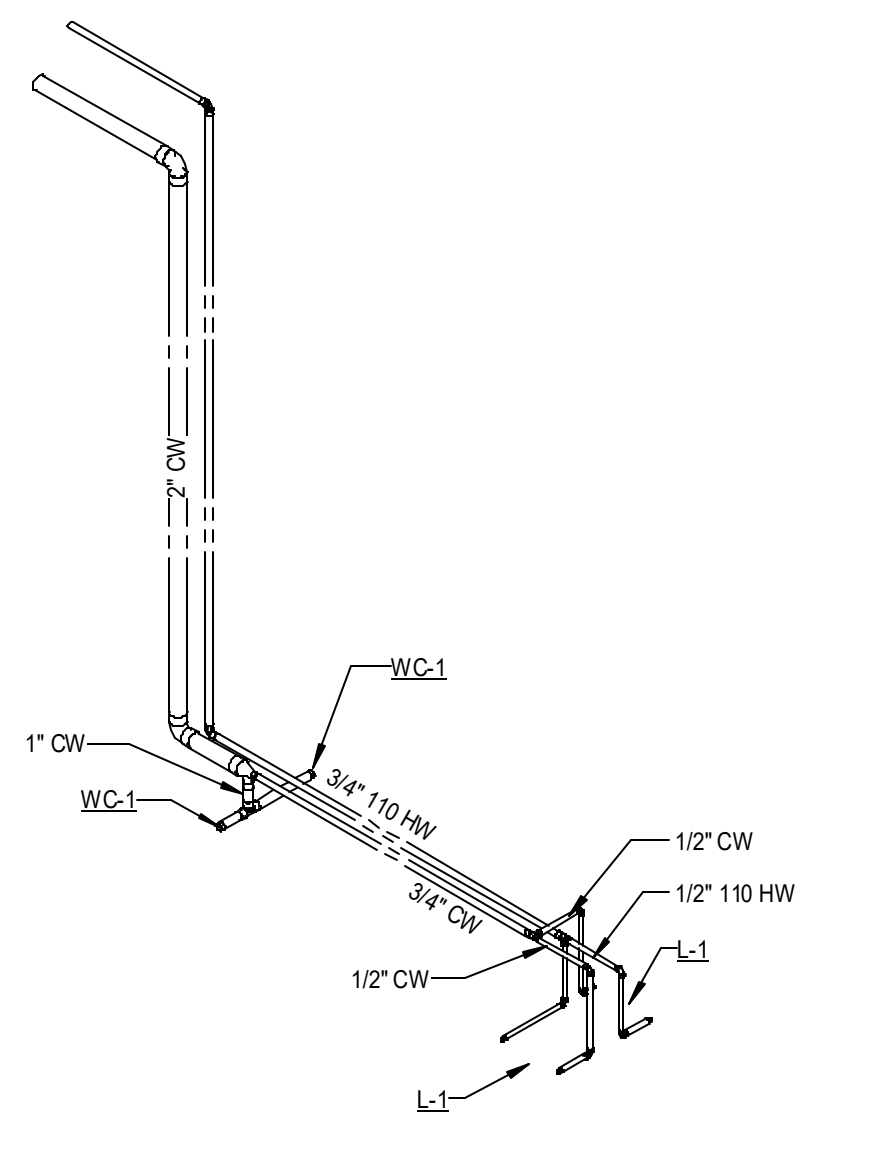
4 PLUMBING RISER DIAGRAM - HOLDING CELLS 142 & 143
SCALE: P2.1B



2 PLUMBING RISER DIAGRAM - TOILET 124
SCALE: P2.1B



3 PLUMBING RISER DIAGRAM - TOILET 106 & 107
SCALE: P2.1B



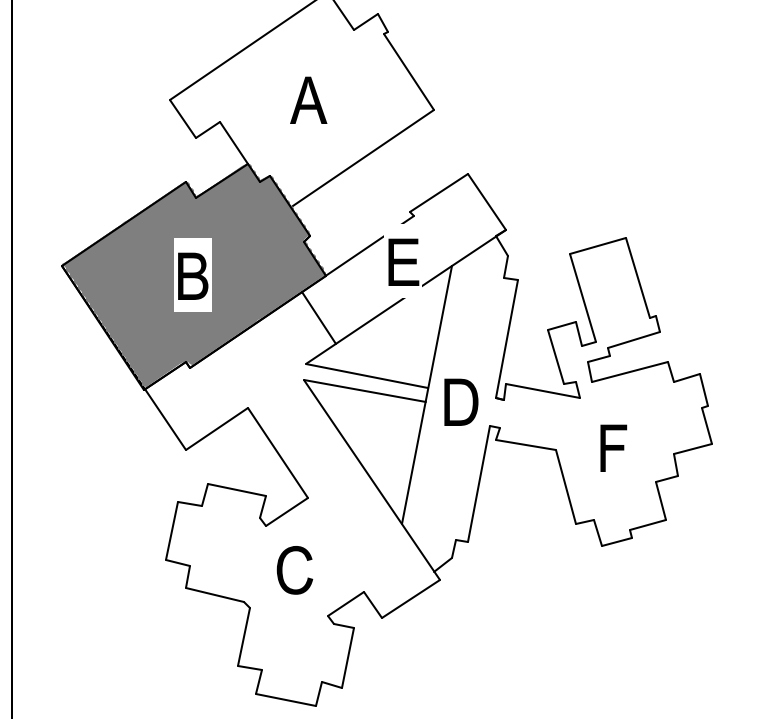
GENERAL NOTES

- A GENERAL NOTE 1
- B GENERAL NOTE 2

SHEET NOTES

- P7 3' VTR
- P13 EXTEND 2" CW, 1" HW, AND 3/4" HWC INTO THIS AREA FOR
- P20 NEW 2" CW TO REFEED DOMESTIC WATER NEEDS OF AREA B AND ADJACENT AREAS. ROUTE ALONGSIDE EXISTING DOMESTIC WATER PIPING BACK TO EXISTING WATER ENTRANCE ROOM.
- P21 REMOVE EXISTING CW PIPING IN THIS AREA UP TO BFP OR OTHER MEANS OF ISOLATION. CONNECT NEW 2" CW PIPING AT POINT OF DISCONNECTION TO REFEED SYSTEM. IF NO BACKFLOW PREVENTER EXISTS AT BUILDING ENTRANCE OR IF 2" CW IS NOT SUFFICIENT SIZE, NOTIFY ENGINEER OF RECORD IMMEDIATELY FOR RESOLUTION.
- P22 PROVIDE LEAK PROTECTION UNDER EXISTING DOMESTIC WATER PIPING IN ELECTRICAL ROOM. SHEET METAL DRIP PAN WITH MOISTURE DETECTION AND ALARM.

KEY PLAN



NOT FOR CONSTRUCTION.

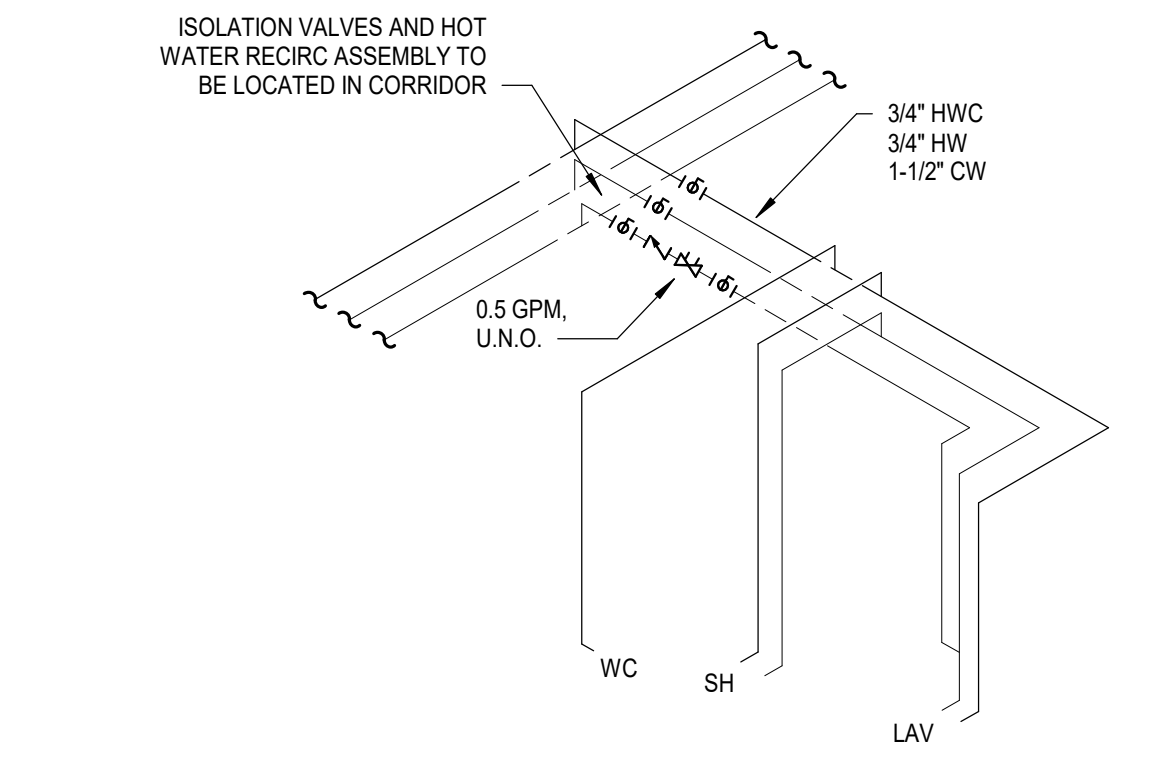
Robert W. Depke Juvenile Center Renovation
 24857 North Milwaukee Avenue
 Vernon Hills, Illinois 60061

BID SET
 06/20/2024
 REVISIONS
 1 ADDENDUM #3 7.23.2024

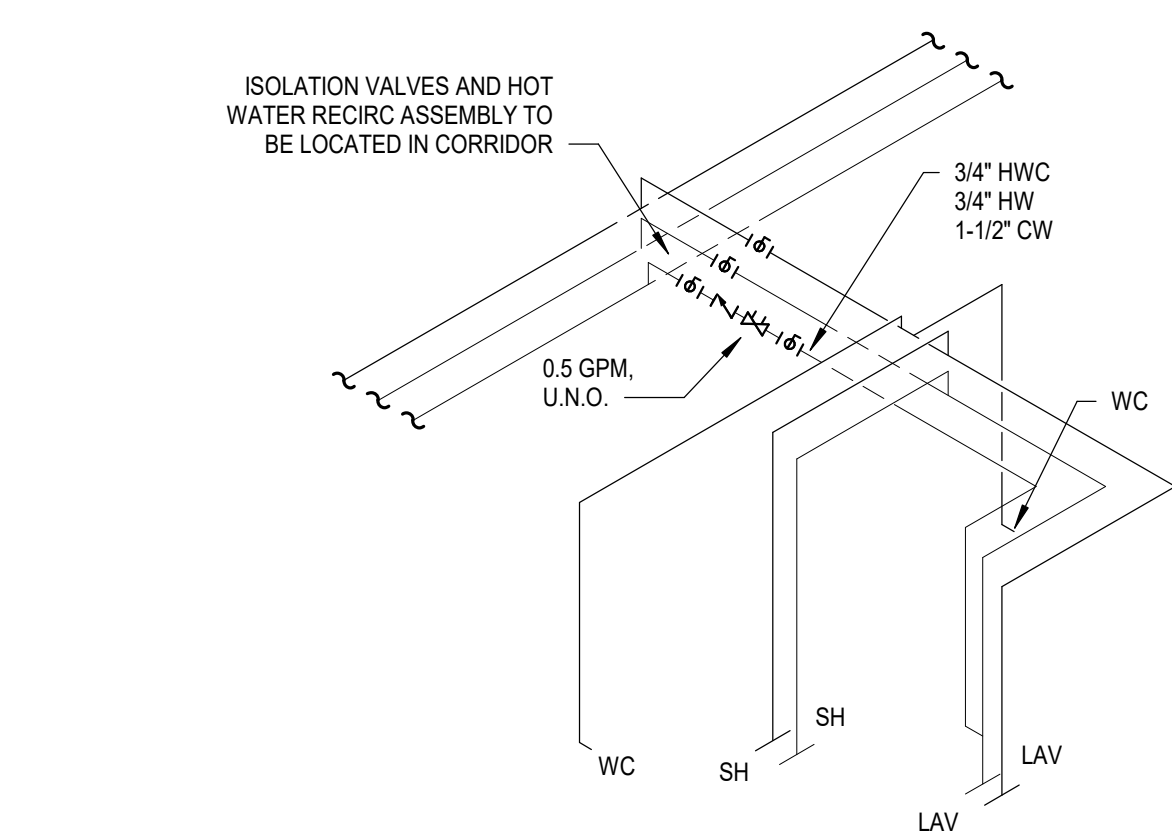
22-22114-00
LEVEL 01 - AREA B - PLUMBING PLAN

P2.1B

Model: P2.1D 22-22114-00 Depke Juv Justice-Ctr 2 Expansions_Renov 22-22114-00 Depke Juv Justice-Ctr 2 Expansions_Renov MEP_2024.rvt
 7/26/2024 12:29:05 PM



2
 TYPICAL SINGLE SHOWER ROOM DOMESTIC WATER RISER
 P2.1D NO SCALE



1
 TYPICAL BACK-TO-BACK SHOWER ROOM DOMESTIC WATER RISER
 P2.1D NO SCALE

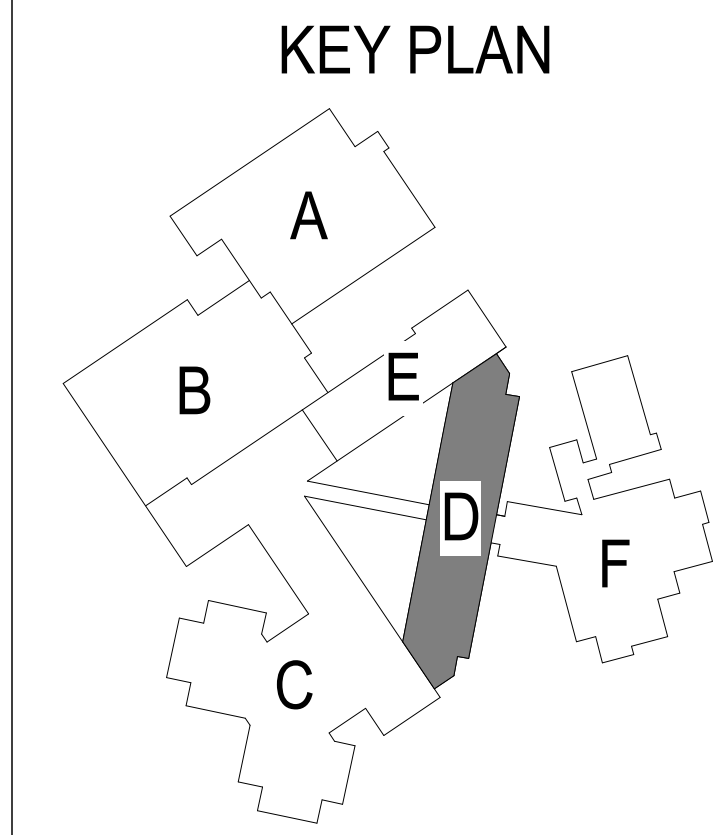
LEVEL 01 - AREA D - PLUMBING PLAN
 SCALE: 1/8" = 1'-0"

GENERAL NOTES

- A GENERAL NOTE 1
- B GENERAL NOTE 2

SHEET NOTES

- P4 CONNECT NEW WH-1 TO EXISTING HOT WATER AND HOT WATER RECIRC SYSTEMS. REFER TO DETAIL T1P4.1 FOR MORE INFORMATION.
- P17 IN STAFF BATHROOMS RECONNECT PLUMBING PIPING TO NEW FIXTURES. FIXTURE COUNT AND APPROXIMATE LOCATION IS NO DIFFERENT THAN EXISTING CONDITIONS. ADJUST AS REQUIRED.



NOT FOR CONSTRUCTION

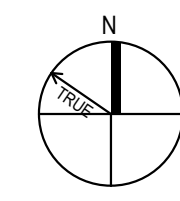
24857 North Milwaukee Avenue
 Vernon Hills, Illinois 60061

BID SET
 08/20/2024
 REVISIONS
 1 ADDENDUM #3 7.29.2024

22-22114-00
 LEVEL 01 - AREA D - PLUMBING PLAN

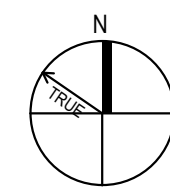
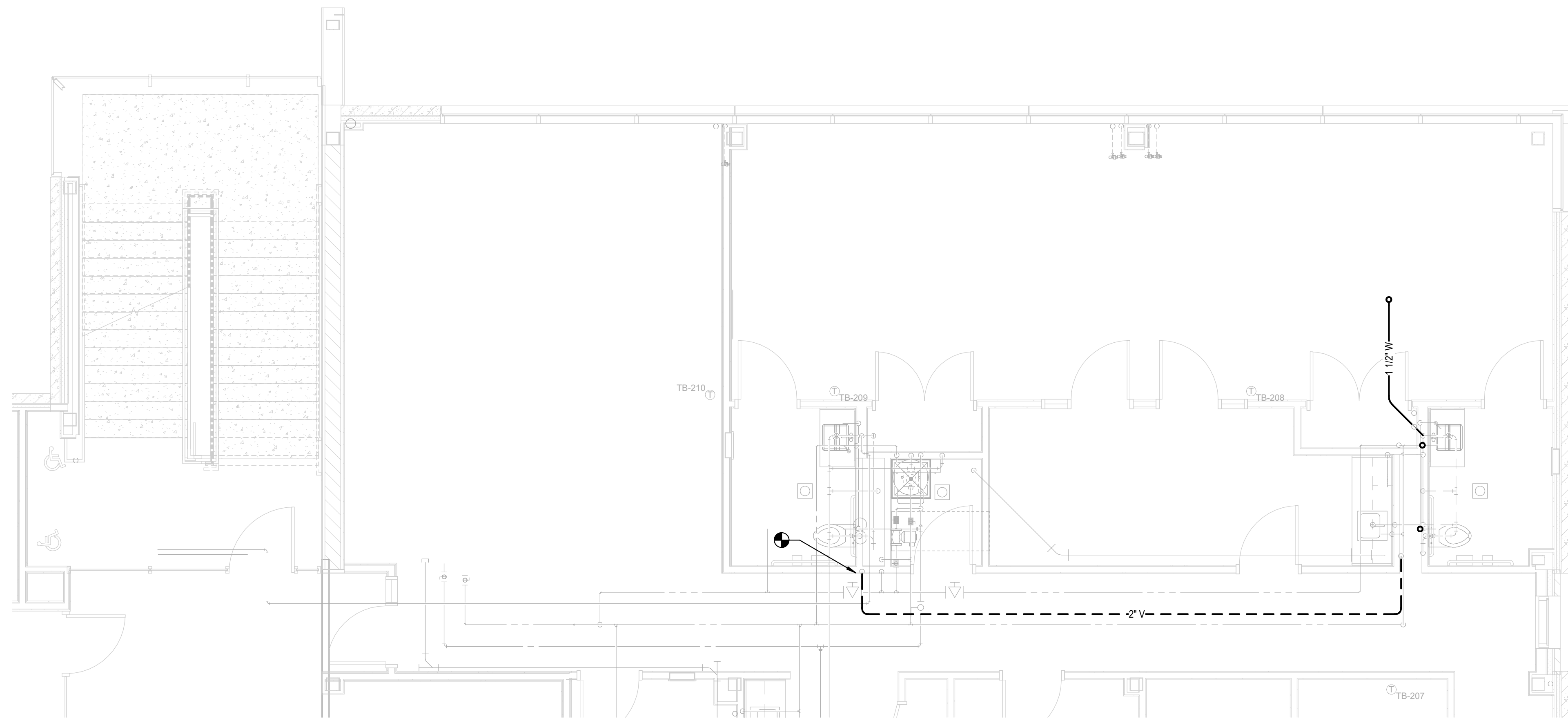
P2.1D

Mechanical Drawings 22-22114-03 Depke Juv Justice Ctr 2 Expansions Rev 02/22/24 14:00 Depke Juv Justice Ctr 2 Expansions Rev 02/22/24
 7/26/2024 2:11:30 PM



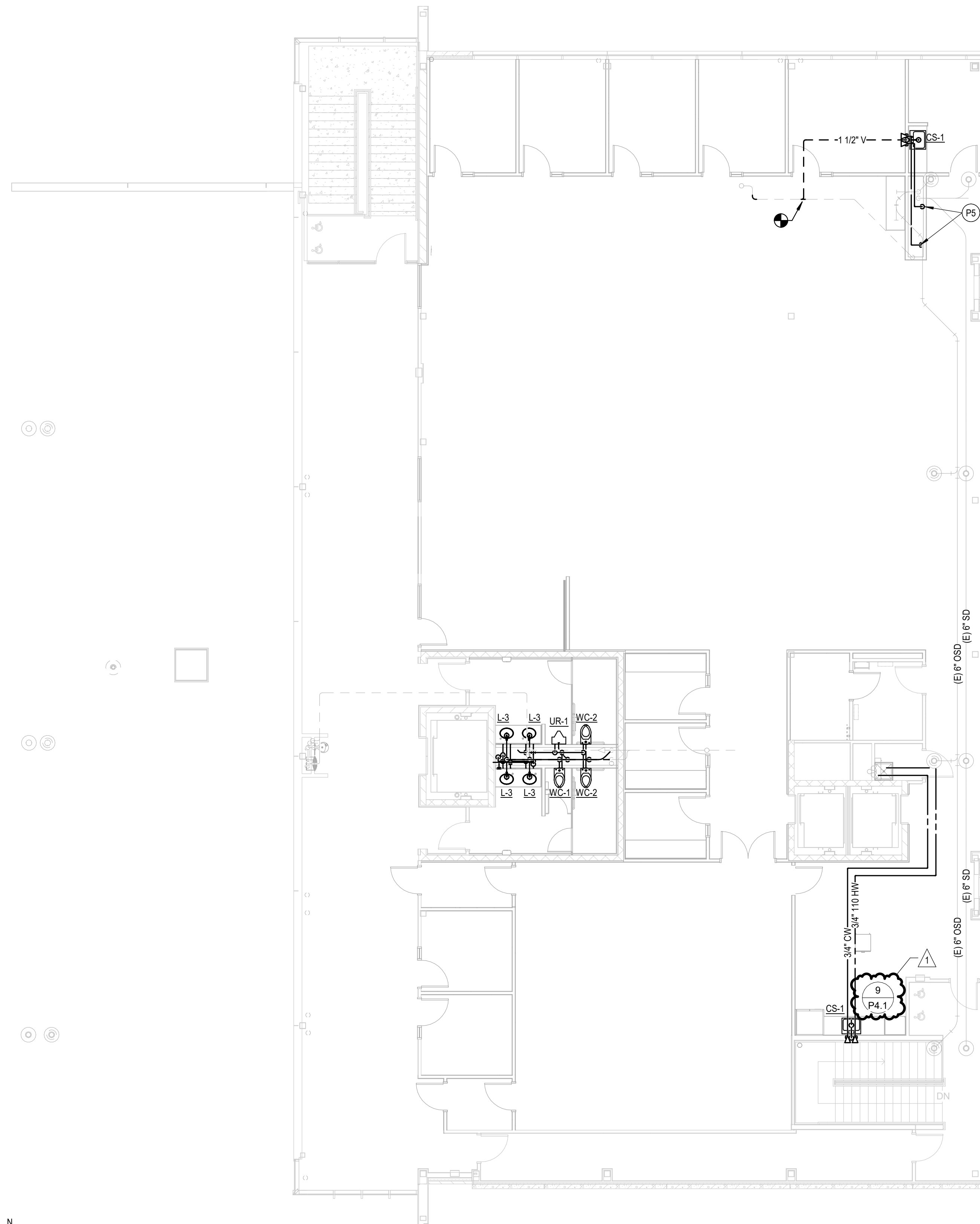
LEVEL 02 - AREA A - PLUMBING PLAN

SCALE: 1/4" = 1'-0"



LEVEL 03 - AREA A - PLUMBING PLAN

SCALE: 1/8" = 1'-0"

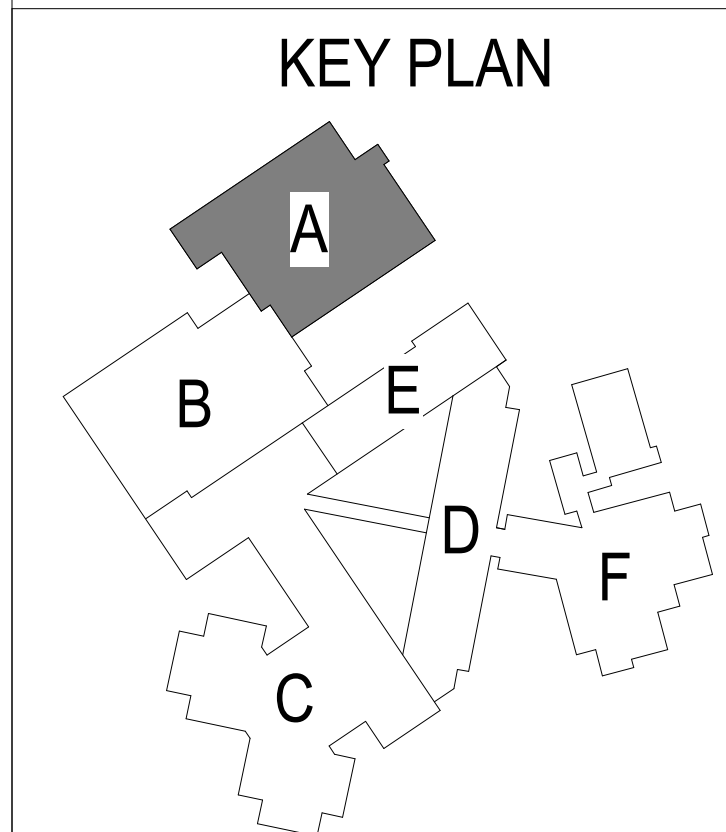


GENERAL NOTES

- A GENERAL NOTE 1
- B GENERAL NOTE 2

SHEET NOTES

- P5 CONNECT TO EXISTING HOT AND COLD WATER LINES ON FLOOR BELOW



NOT FOR CONSTRUCTION

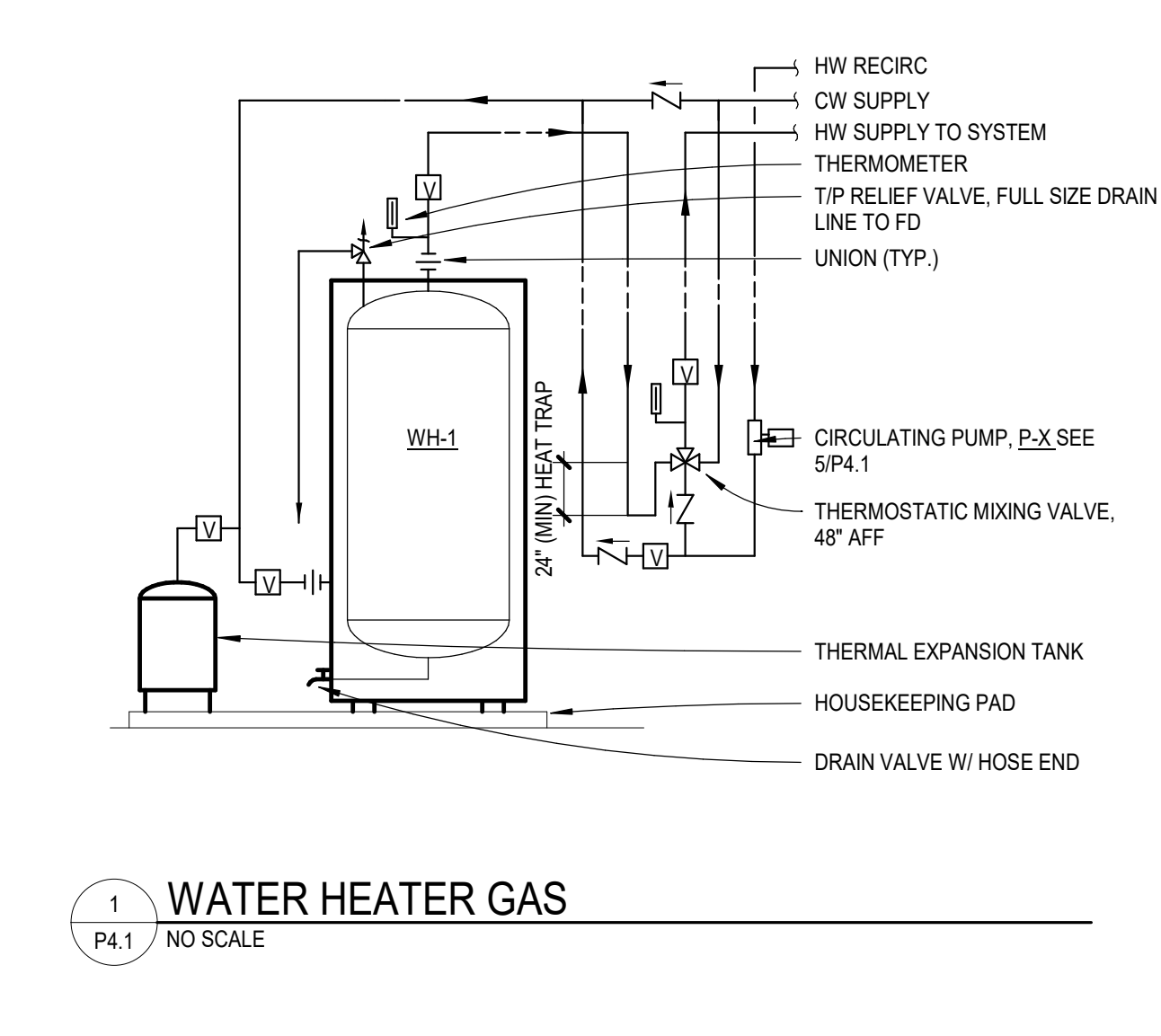
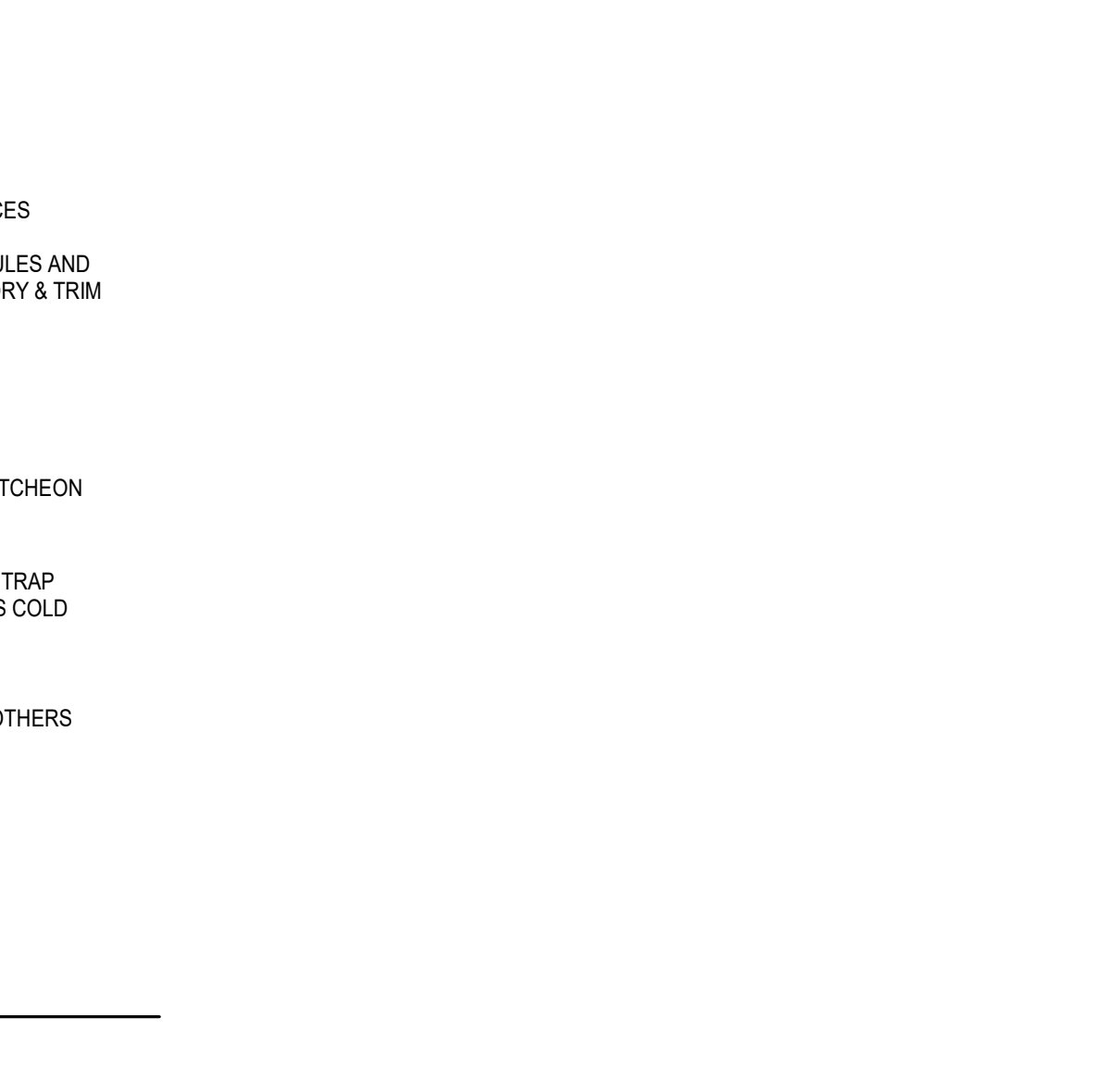
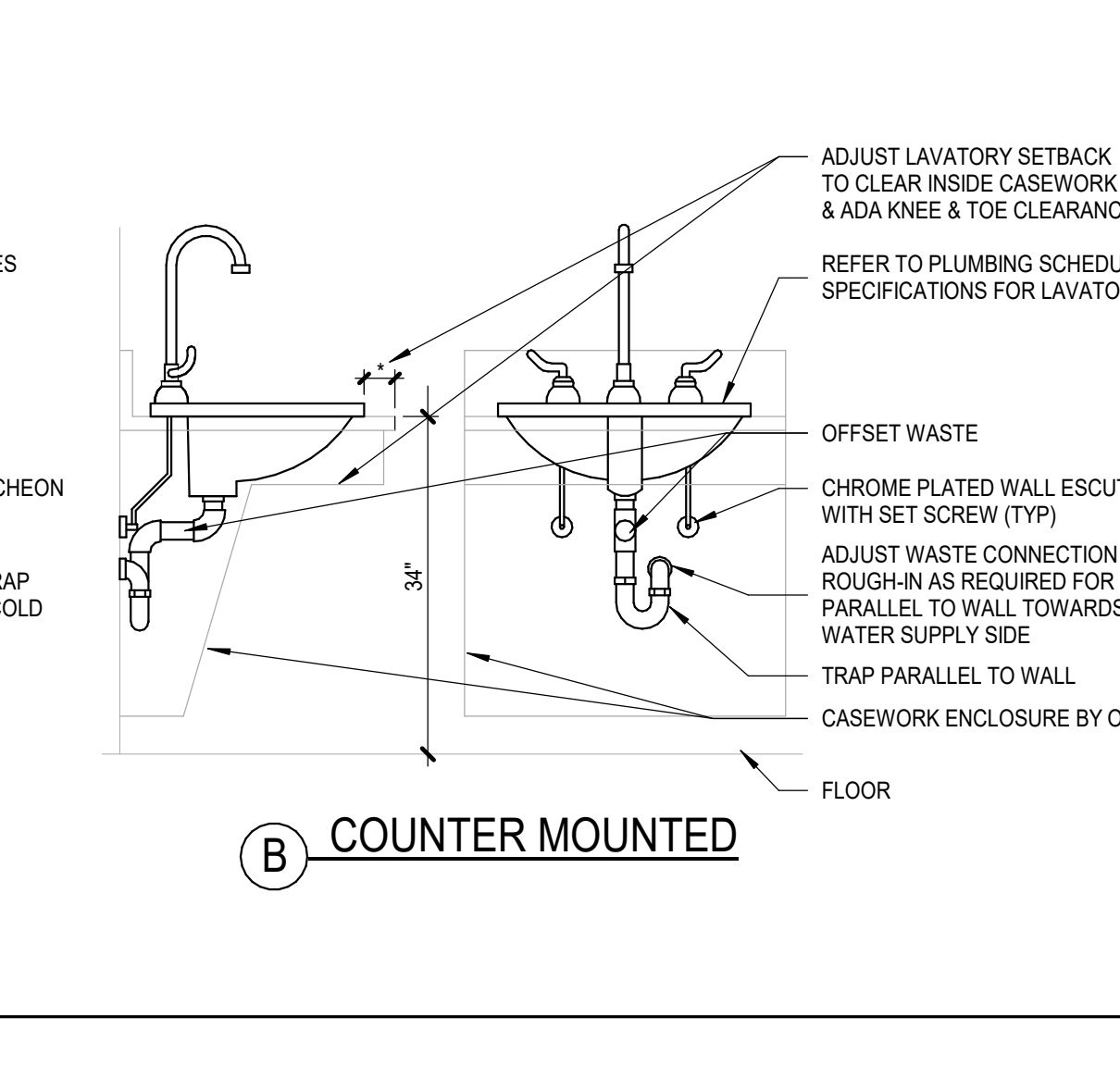
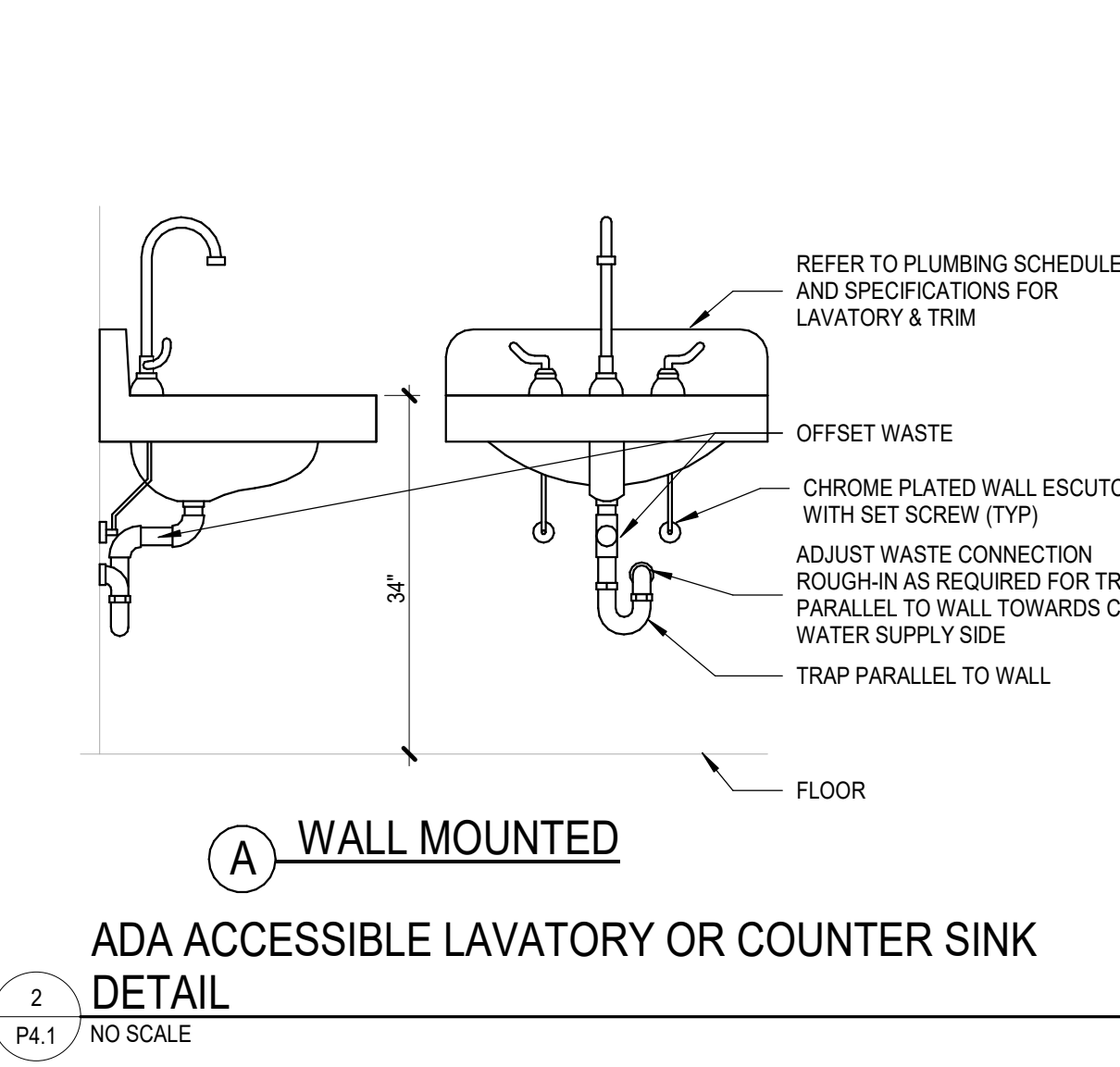
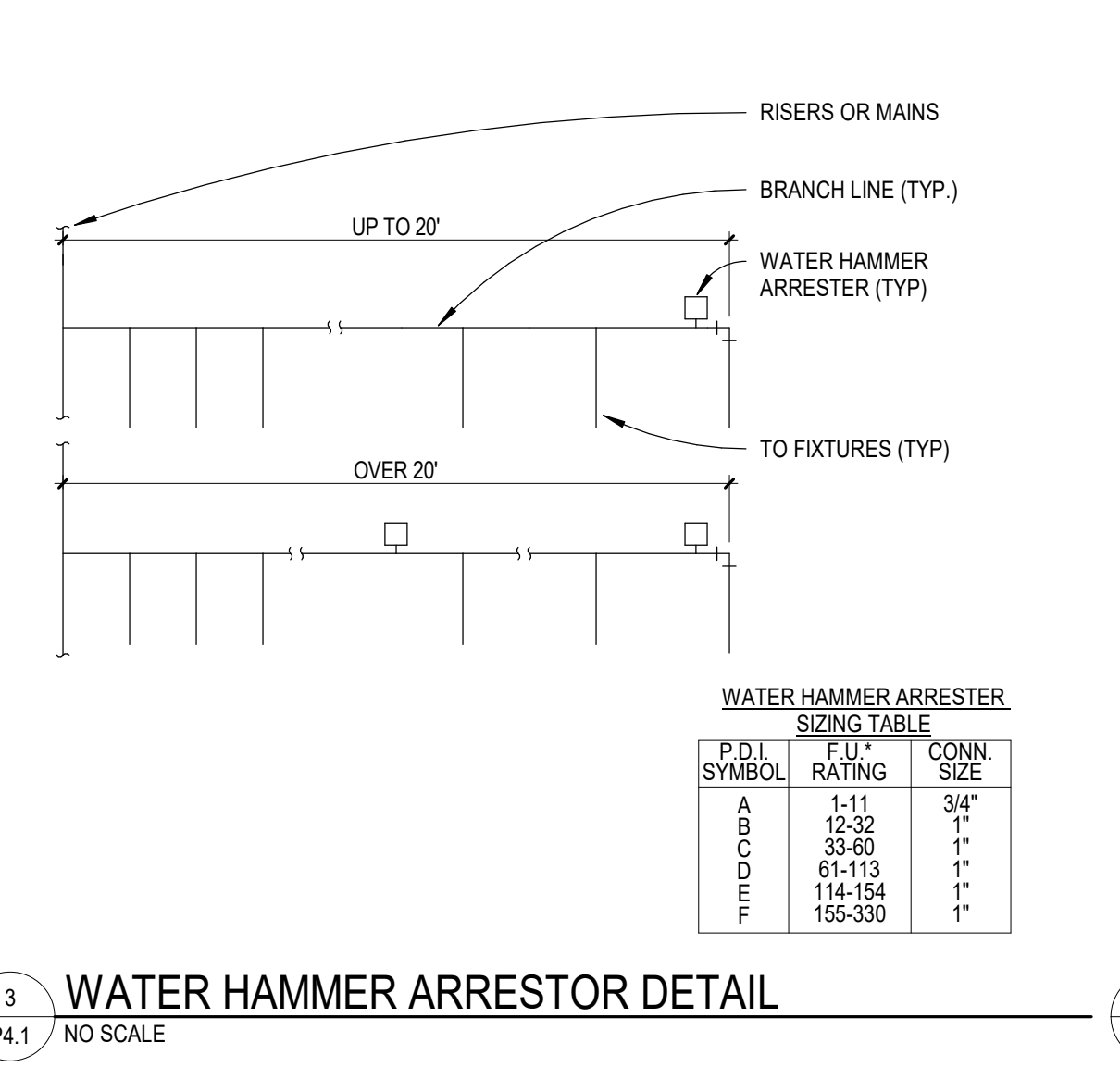
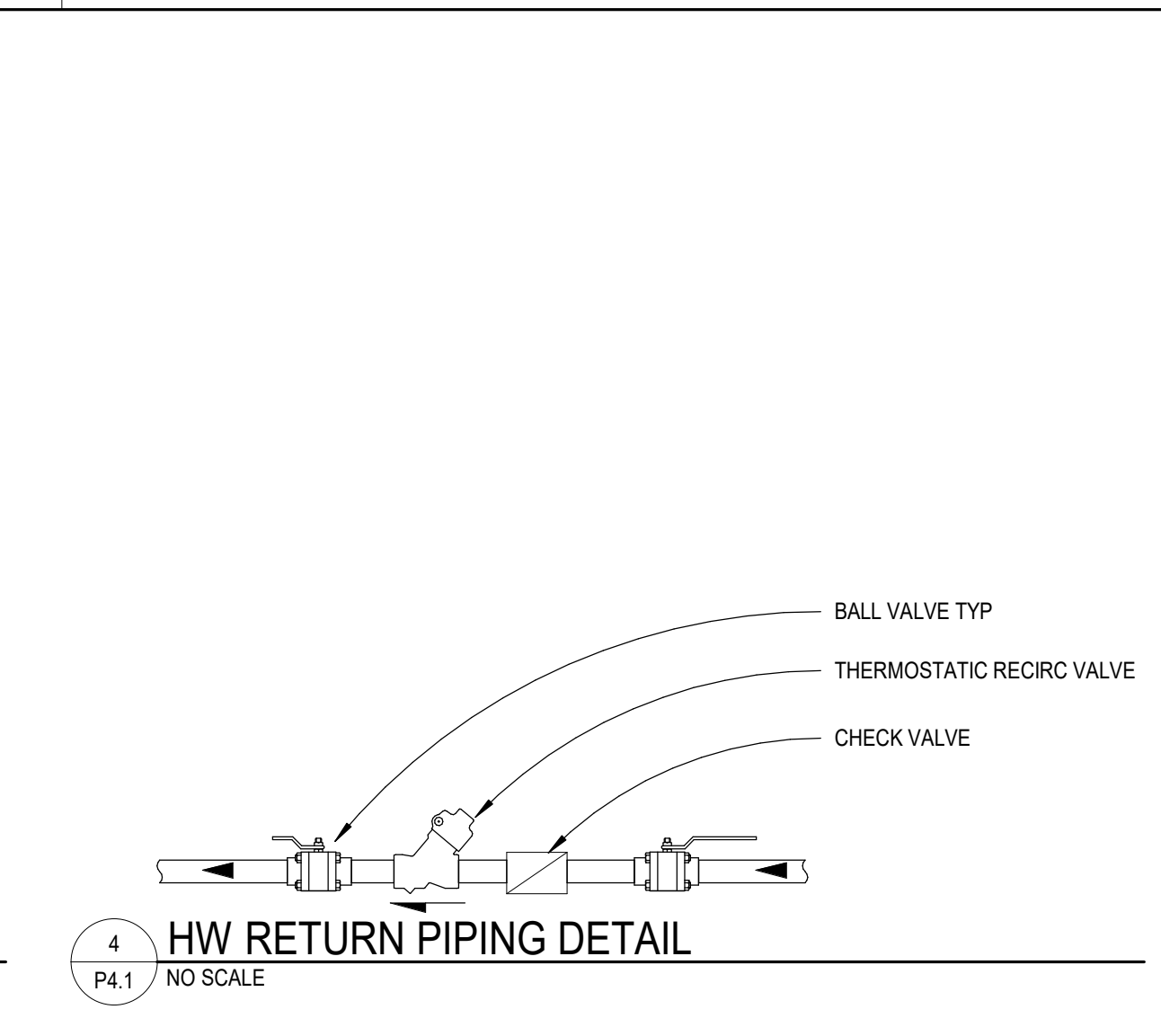
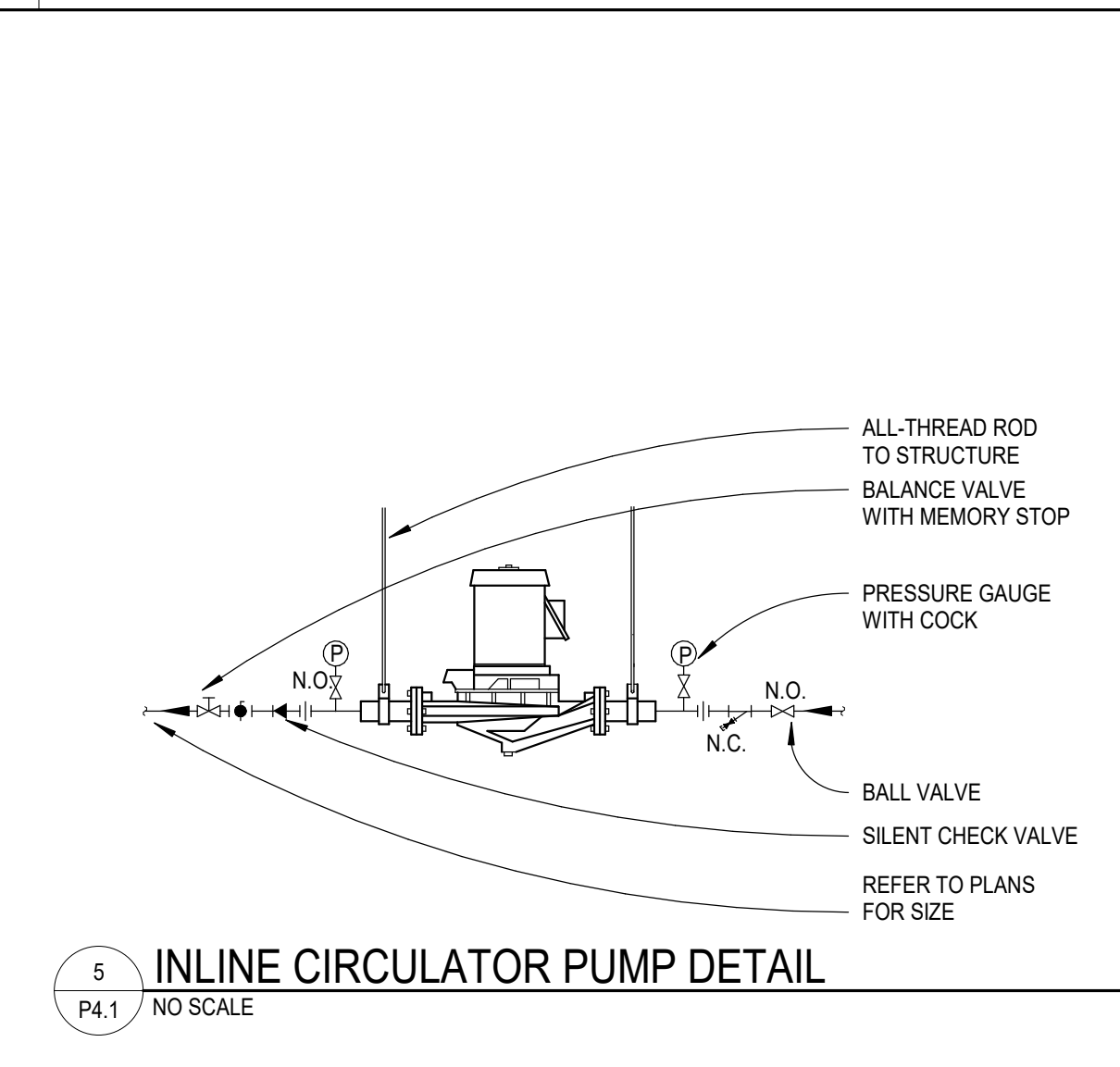
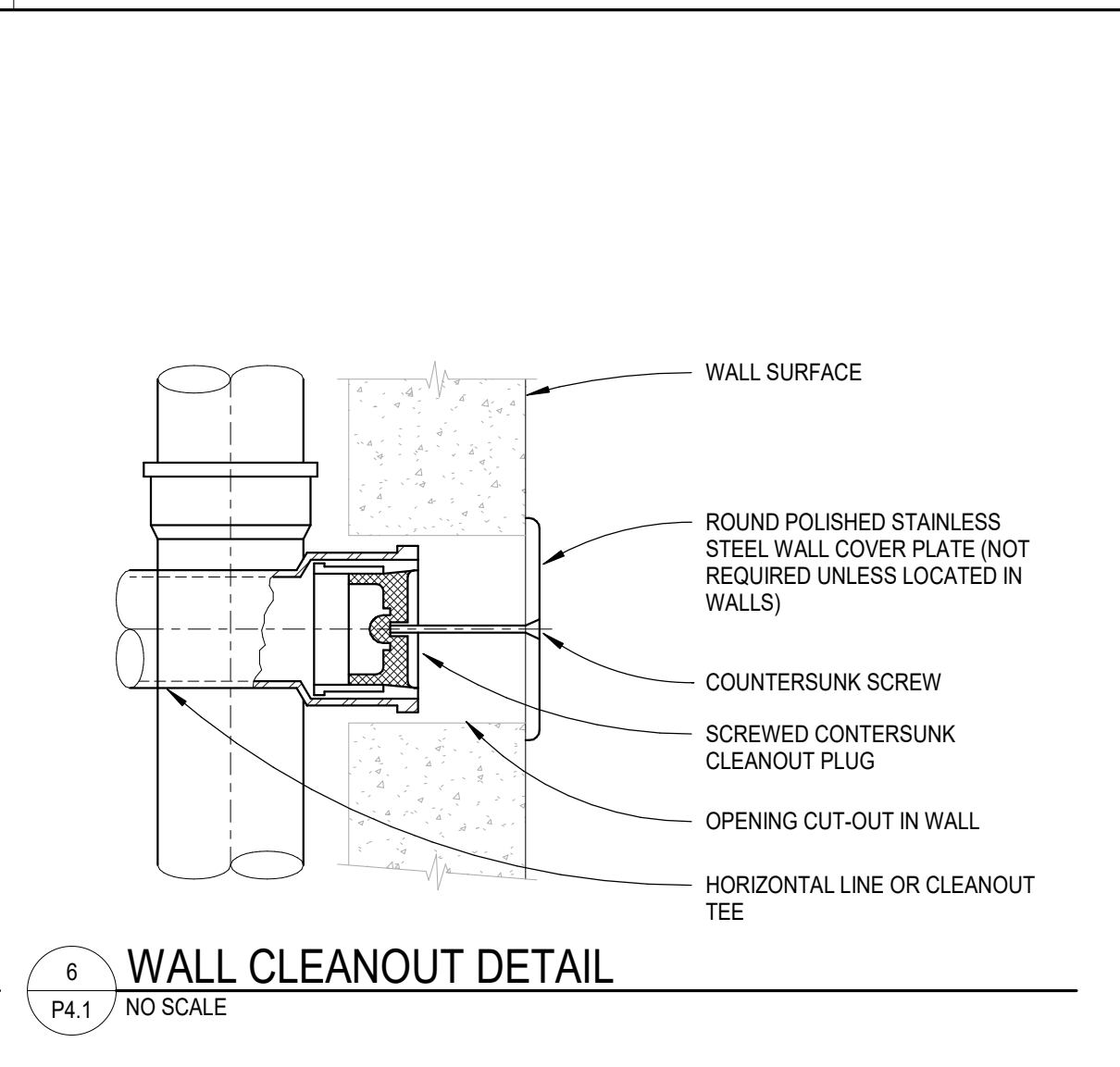
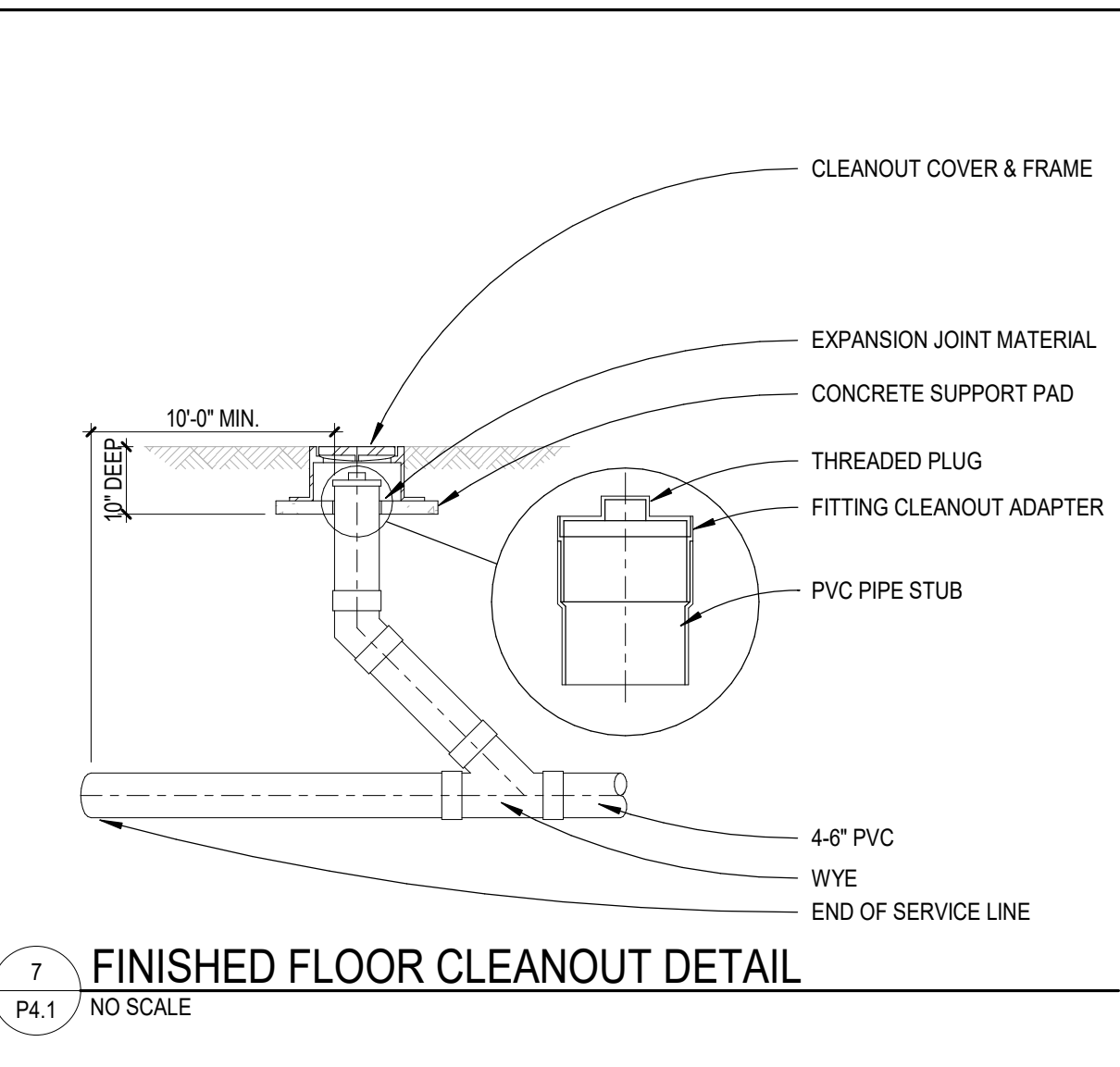
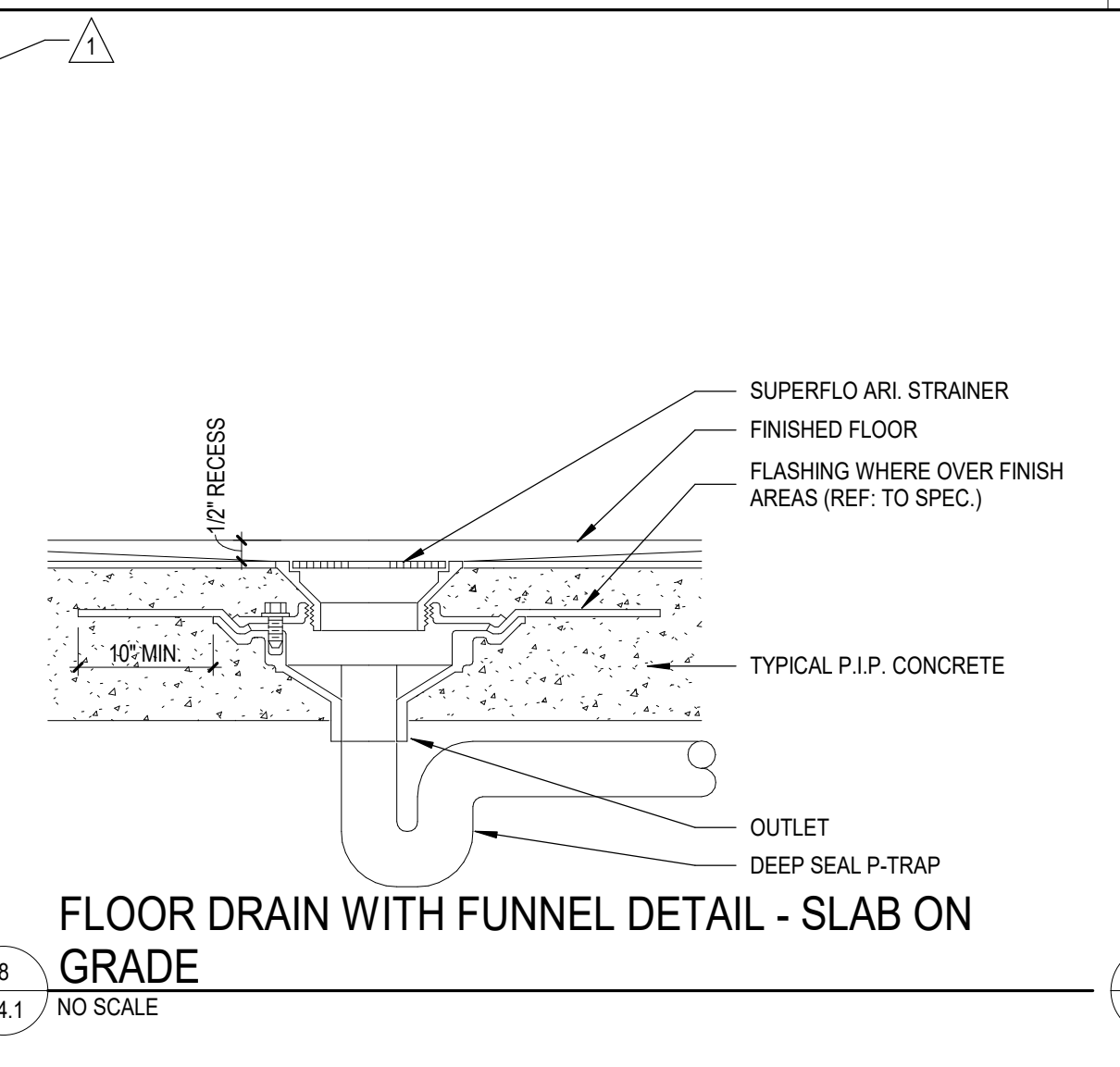
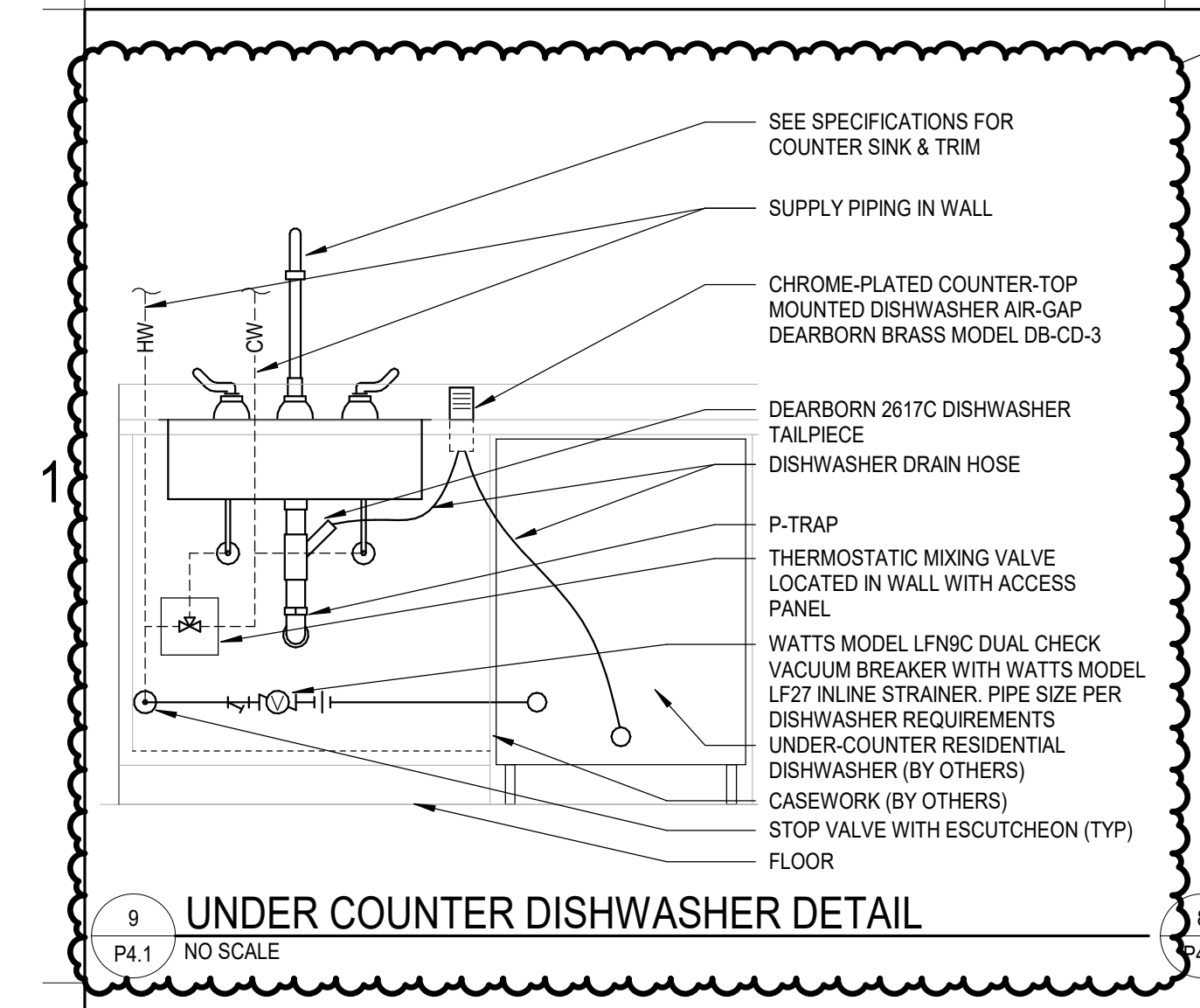
Robert W. Depke Juvenile Center Renovation

24857 North Milwaukee Avenue
 Vernon Hills, Illinois 60051

BID SET
 08/20/2024
 REVISIONS
 1 ADDENDUM #3 7.29.2024

22-22114-00
 LEVEL 03 - AREA A - PLUMBING PLAN

P2.3A



1 UNDER COUNTER DISHWASHER DETAIL
P4.1 NO SCALE

2 FLOOR DRAIN WITH FUNNEL DETAIL - SLAB ON GRADE
P4.1 NO SCALE

3 FINISHED FLOOR CLEANOUT DETAIL
P4.1 NO SCALE

4 WALL CLEANOUT DETAIL
P4.1 NO SCALE

5 INLINE CIRCULATOR PUMP DETAIL
P4.1 NO SCALE

6 HW RETURN PIPING DETAIL
P4.1 NO SCALE

7 WATER HAMMER ARRESTOR DETAIL
P4.1 NO SCALE

8 ADA ACCESSIBLE LAVATORY OR COUNTER SINK DETAIL
P4.1 NO SCALE

9 ADA ACCESSIBLE LAVATORY OR COUNTER SINK DETAIL
P4.1 NO SCALE

10 WATER HAMMER ARRESTOR SIZING TABLE
P4.1 NO SCALE

11 ADA ACCESSIBLE LAVATORY OR COUNTER SINK DETAIL
P4.1 NO SCALE

12 WATER HEATER GAS
P4.1 NO SCALE

Model: P:\2024\22-22114-00_Depke Juv Justice-Fin 2 Expansions_Renov\22-22114-00_Depke Juv Justice-Fin 2 Expansions_Renov.dwg
 Date: 08/20/2024
 Time: 10:11:11 AM
 User: JLD

NOT FOR CONSTRUCTION