

NOT FOR CONSTRUCTION

FOR REVIEW ONLY

Not for regulatory approval, permit or construction.

The information on this document is preliminary or incomplete, not for construction, recording purposes, or implementation.

| ISSUANCE | |
|----------|------------|
| NO | DATE |
| 2 | 12/12/2024 |
| | ADDENDUM 2 |

LAKE COUNTY PUBLIC WORKS OFFICE ADDITION
LAKE COUNTY, IL
650 WEST WINCHESTER ROAD,
LIBERTYVILLE, IL 60048
95% CD ISSUANCE

FIRST FLOOR ELECTRICAL POWER PLAN

SHEET NO.

E3.1

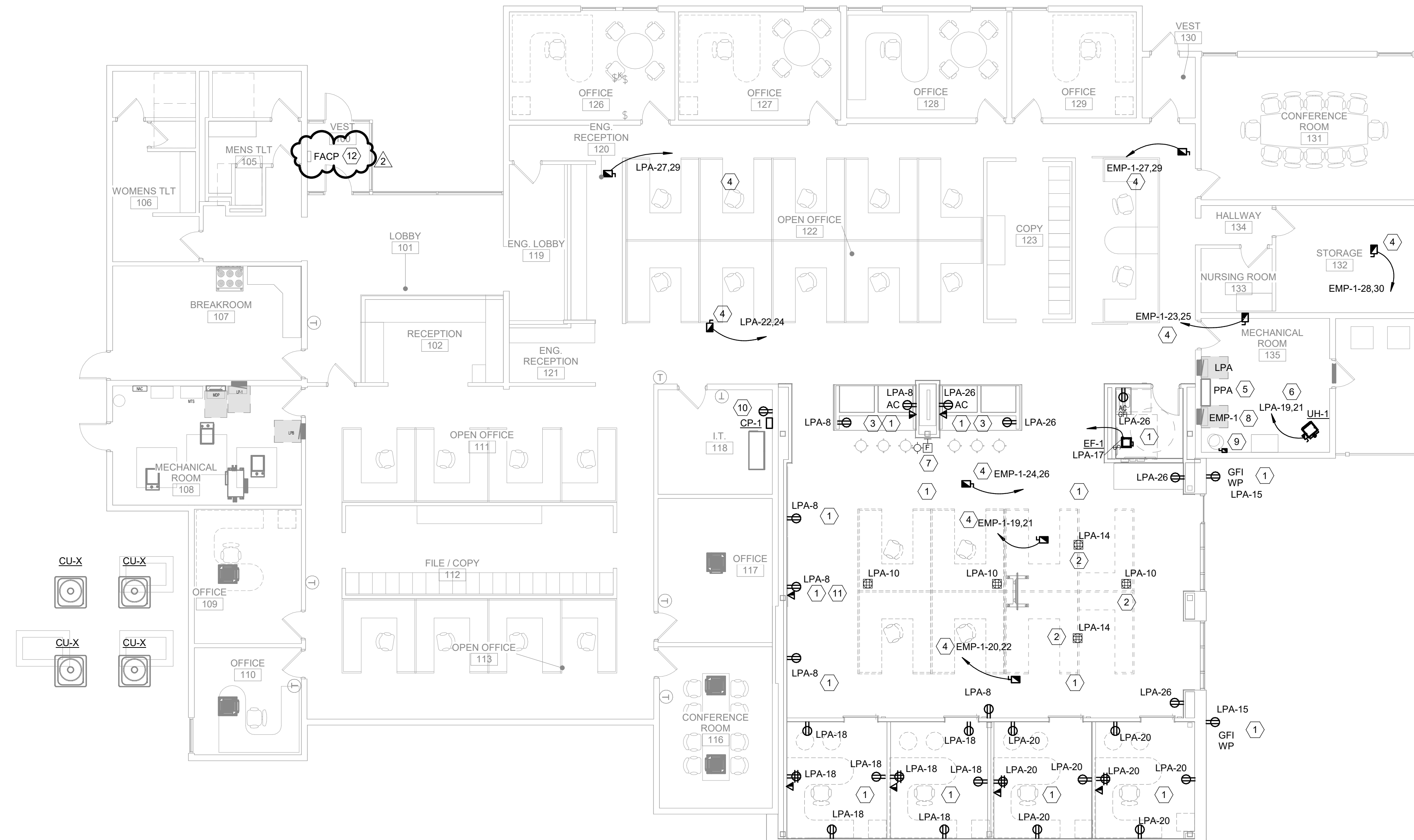
JOB NO. 24-4020.01
© 2024 FGM Architects Inc.

NOTES (THIS SHEET)

- A. REFER TO SHEET A0.00 FOR GENERAL NOTES, LEGEND, AND ABBREVIATIONS.
- B. WHERE CONNECTED TO A 20A. BRANCH CIRCUIT SUPPLYING AN INDIVIDUAL RECEPTACLE (SIMPLEX OR DUPLEX), THE RECEPTACLE SHALL BE RATED AT 20A.
- C. REFER TO SECTION 26 0519 FOR MINIMUM CONDUCTOR SIZE ADJUSTMENTS FOR VOLTAGE DROP.
- D. PROVIDE PROPER NUMBER OF CONDUCTORS TO ACHIEVE CIRCUITING AND SWITCHING SHOWN.
- E. CIRCUIT NUMBERS AT DEVICES CORRESPOND TO PANELBOARD BREAKERS (SEE PANELBOARD SCHEDULE). BRANCH CIRCUITS SHALL BE SIZED ACCORDING TO THE CIRCUIT BREAKER RATING, UNLESS INDICATED OTHERWISE ON THE ELECTRICAL EQUIPMENT SCHEDULE.
- F. PER NEC ARTICLE 511, ALL WIRING, CONDUIT AND ELECTRICAL EQUIPMENT UP TO 18" ABOVE FLOOR LEVEL IN SQUAD GARAGE 181 AND APPARATUS BAY 236 SHALL BE RATED FOR USE IN CLASS 1, DIVISION 2, GROUP D LOCATIONS.
- G. EXISTING ELECTRICAL SYSTEMS IN CONFLICT WITH CONSTRUCTION SHALL BE RELOCATED TO PERMIT INSTALLATION OF DEVICES AND EQUIPMENT SHOWN ON PLANS.
- H. LOW VOLTAGE CONTRACTOR SHALL RUN CAT6E CABLE AND CONDUIT FROM EXISTING IT ROOM TO DATA OUTLETS AND LOW VOLTAGE SYSTEMS. LOW VOLTAGE CONTRACTOR TO PROVIDE FINAL TERMINATION.

KEYNOTES (THIS SHEET)

- 1. CIRCUIT NUMBERS SHOWN ARE FOR GROUPING PURPOSES. VERIFY AVAILABLE CIRCUIT IN PANEL "LPA" PRIOR TO INSTALLATION.
- 2. PROVIDE RECESSED FLOORBOX AND CONNECT TO 20A CIRCUIT IN PANEL "LPA".
- 3. PROVIDE POWER AND DATA RECEPTACLE ABOVE COUNTERTOP. VERIFY EXACT HEIGHT WITH ARCHITECTURAL DRAWINGS.
- 4. PROVIDE A 20A. 208V-2P CONNECTION FOR MECHANICAL VAV BOX. PROVIDE A 20A-2P BREAKER IN PANEL "EMP-1". VERIFY AVAILABLE CIRCUITS PRIOR TO INSTALLATION SEE MECHANICAL SCHEDULES AND DRAWINGS FOR ADDITIONAL INFORMATION.
- 5. PROVIDE A 125A, 3P BREAKER SWITCH IN EXISTING DISTRIBUTION BOARD "PPA" FOR NEW ROOF TOP UNIT RTU-1. BREAKER TO MATCH EXISTING SEIMENS BREAKERS IN DISTRIBUTION BOARD.
- 6. PROVIDE A 40A. 208-2P CONNECTION FOR UNIT HEATER UH-1. VERIFY AVAILABLE SPACE IN PANEL PRIOR TO INSTALLATION.
- 7. PROVIDE FIRE ALARM STROBE AND TIE INTO EXISTING FIRE ALARM SYSTEM.
- 8. SEE PANEL SCHEDULES ON SHEET E5.1 FOR REVISION TO PANELBOARD "EMP-1". NEW 2-POLE, 30A BREAKERS SHALL BE OF SIEMENS TYPE AND MATCH EXISTING BREAKERS IN PANELBOARD.
- 9. RECONNECT EXISTING WATER TO SAME CIRCUIT PRIOR TO DEMOLITION.
- 10. PROVIDE A 20A. 120V CONNECTION FOR CONDENSATE PUMP CP-1.
- 11. PROVIDE A POWER AND DATA RECEPTACLE AT 5'-0" AFF FOR FUTURE SMARTBOARD. VERIFY EXACT ELEVATION AND LOCATION WITH ARCHITECTURAL DRAWING.
- 12. EXISTING HONEYWELL S3 SERIES FIRE ALARM CONTROL PANEL COORDINATE INTEGRATION OF NEW FIRE ALARM DEVICES TO EXISTING SYSTEM WITH FIRE ALARM VENDOR FSS TECHNOLOGIES.



1 FIRST FLOOR POWER PLAN

