



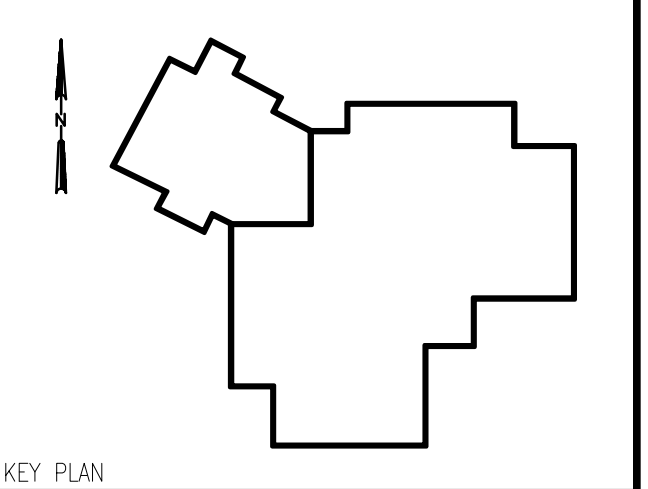
GLOBETROTTERS ENGINEERING CORPORATION ("GEC") RETAINS ALL PROPRIETARY RIGHTS AND COPYRIGHTS, STATUTORY AND COMMON LAW, TO THESE PLANS AND DESIGNS. USE OF THE DRAWINGS OTHER THAN FOR THEIR INTENDED PURPOSE, REPRODUCTION, ALTERATION, OR ASSIGNMENT TO ANY THIRD PARTY SHALL NOT OCCUR WITHOUT EXPRESS WRITTEN CONSENT BY GEC. GEC ASSUMES NO RESPONSIBILITY FOR ANY DRAWING NOT USED IN COMPLIANCE WITH THIS PARAGRAPH.

REVISIONS

NO.	DATE	DESCRIPTION
1	09/27/23	ISSUED FOR 90% 100% CD
2	06/07/24	100% CD
3	07/26/24	ADDENDUM 1

I HEREBY CERTIFY THAT THESE PLANS WERE PREPARED UNDER MY DIRECT SUPERVISION AND TO THE BEST OF MY KNOWLEDGE AND BELIEF, CONFORM TO THE CITY OF CHICAGO BUILDING CODES AND ORDINANCES

DRAWN BY:	KD
DATE DRAFTED:	
CHECKED BY:	MZ
APPROVED BY:	HD



Proj. Title

LC HEALTH DEPT
MECHANICAL SYSTEMS
REPLACEMENT

Task Title

**MECHANICAL
EQUIPMENT ROOM
PLAN – FIRE
PROTECTION**

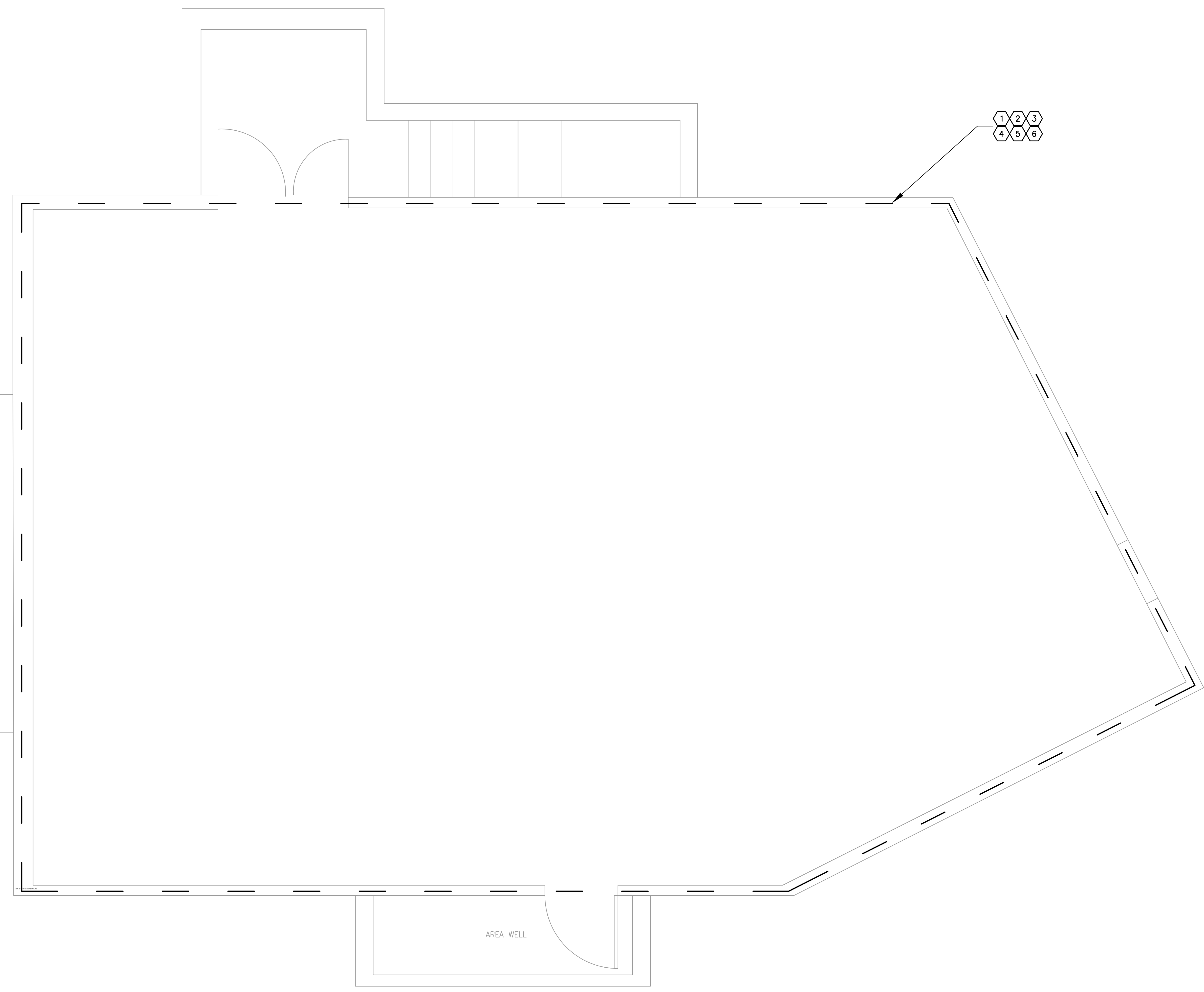
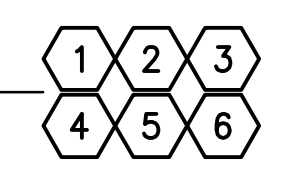
SHEET NO.
FP100
GEC PROJ. NO. 24003

FIRE PROTECTION KEYNOTES:

- 1 THE CONTRACTOR SHALL REMOVE/RELOCATE EXISTING SPRINKLER HEADS DUE TO THE REPLACING THE EXISTING DUCTWORK WITH THE NEW DUCT LAYOUT AND PROVIDE NEW BRANCH PIPING AND HEADS AS REQUIRED TO PROVIDE FULL SPRINKLER COVERAGE. SPRINKLER SYSTEM SHALL BE PER NFPA 13, ORDINARY GROUP 1, MECHANICAL EQUIPMENT ROOMS. CONTRACTOR SHALL SUBMIT SPRINKLER PLANS, HYDRAULIC CALCULATION, CUT SHEETS, ETC. TO THE AHJ AS REQUIRED FOR A PERMIT.
- 2 MODIFY SPRINKLER PIPING AS MAY BE REQ'D TO ACCOMMODATE NEW ROOM LAYOUTS AND CEILINGS. ALL MODIFIED SYSTEMS SHALL BE COMPLETE WITH NEW HEADS, PIPING, FITTINGS, ACCESSORIES, ETC. AS MAY BE REQ'D TO COMPLY WITH NFPA 13.
- 3 PROVIDE SPRINKLER HEADS BELOW ALL DUCTWORK THAT CREATES AN OBSTRUCTION TO SPRAY PATTERN AND ALL DUCTWORK GREATER THAN 48"
- 4 ALL SPRINKLER HEADS INSTALLED 7'-0" A.F.F. OR LESS SHALL HAVE HEAVY DUTY PROTECTIVE GUARDS.
- 5 COORDINATION BETWEEN ALL TRADES SHALL BE THE RESPONSIBILITY OF THE CONTRACTOR.
- 6 THE BASEMENT MECHANICAL ROOM AND THE CRAWL SPACE HAS A WET SPRINKLER SYSTEM. THE MAJORITY OF THE PIPING IS TO REMAIN IN PLACE UNLESS IT IS IN THE WAY OF INSTALLATION. IT WILL BE THE CONTRACTORS RESPONSIBILITY TO COVER DRAINING/ FILLING AND POTENTIAL ANY MINOR HEAD RELOCATION FOR INSTALLATION OF NEW WORK.

GENERAL NOTES:

1. CONTRACTOR SHALL FIELD VERIFY THE LOCATIONS, ELEVATIONS, SIZES, AND CAPACITIES OF EXIST SPRINKLER MAINS & BRANCHES AND MODIFY AS REQ'D BY THE NEW WORK.
2. COORDINATE NEW INSTALLATION WITH THE STRUCTURE, DUCTWORK, CONDUITS, LIGHT FIXTURES, PIPING, ETC. PROVIDE COMPLETE AND OPERATIONAL SYSTEMS.
3. PROVIDE NEW AUXILIARY DRAINS, TEST STATIONS, ETC. AS MAY BE REQ'D BY THE DEMOLITION AND NEW CONSTRUCTION.



1 MECHANICAL EQUIPMENT ROOM FLOOR PLAN – FIRE PROTECTION
SCALE: 1/2" = 1'-0"