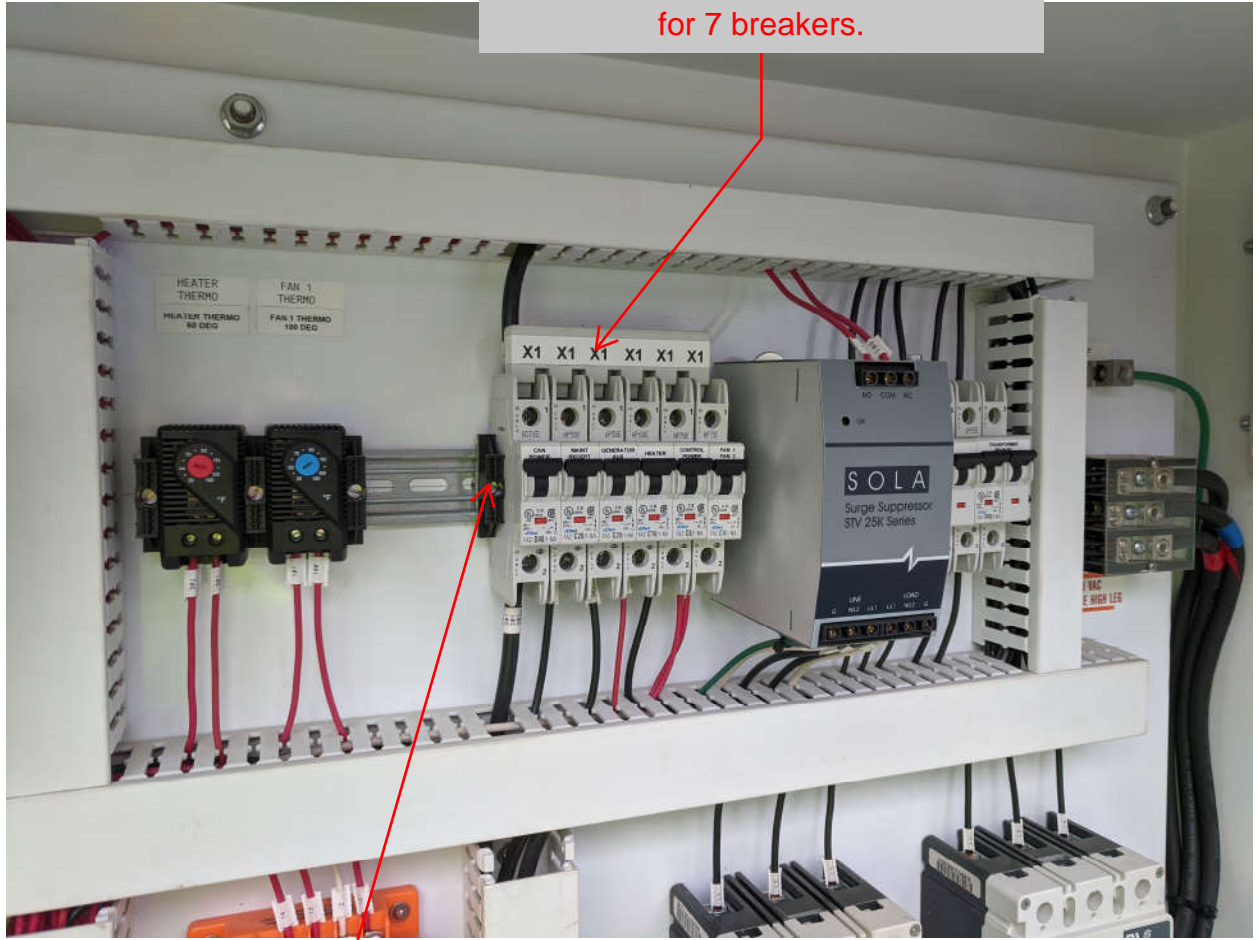
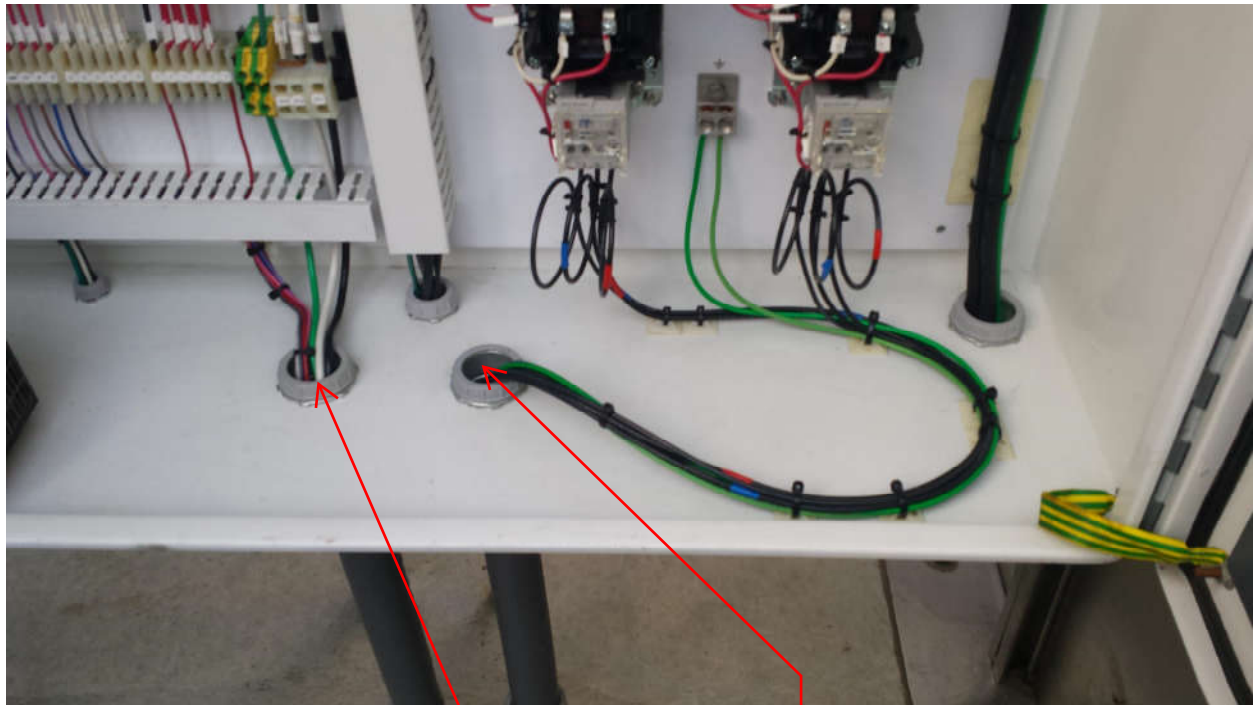


Photo 1 of 10

Replace bus bar with a modified
Eston Z-SV/UL-16/1P-1TE/12 bus bar
for 7 breakers.

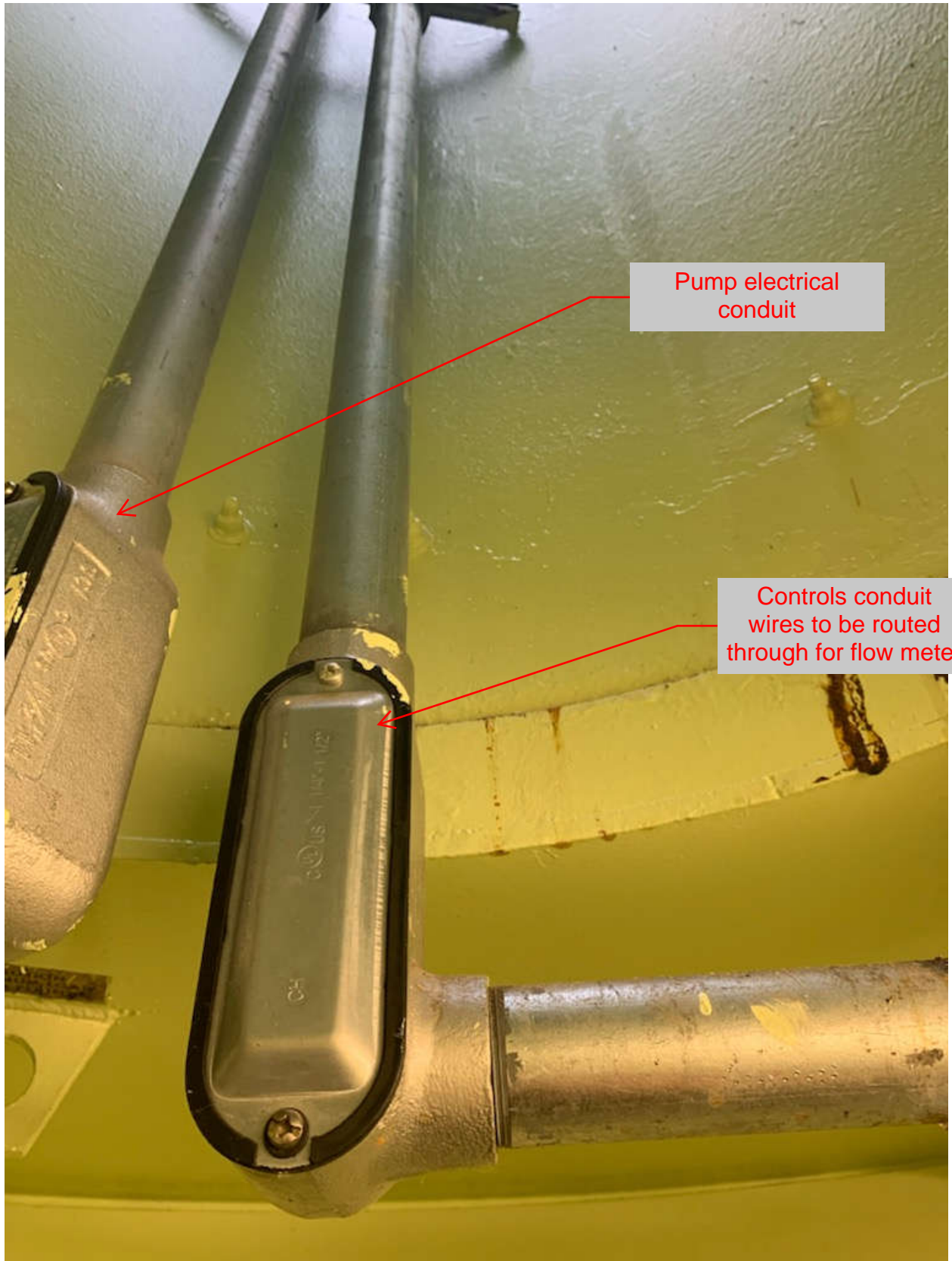


Install new
FA2-C2/1-NA break
for power to meter
signal converter



Pump power conduit

Feed flow meter
cables (2) from
controller to flow
meter through conduit



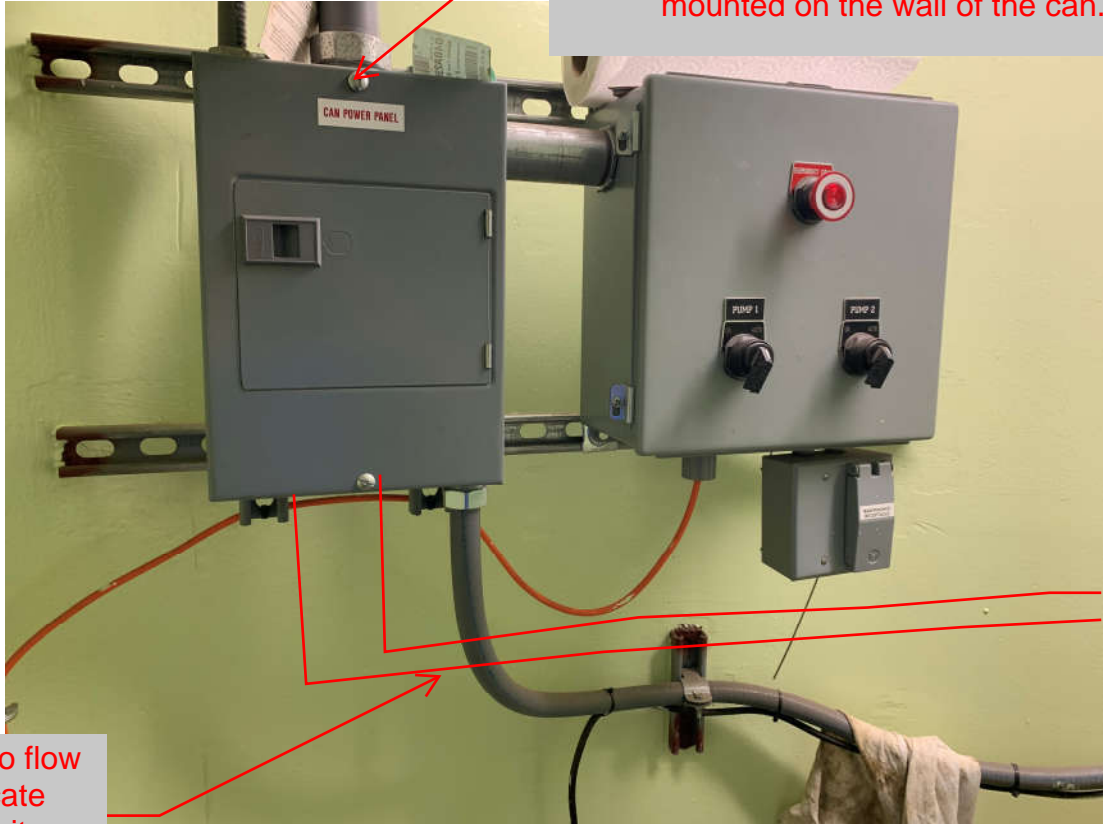
Pump electrical conduit

Controls conduit wires to be routed through for flow meter

Photo 4 of 10

Photo 5 of 10

Bring flow meter cables into panel and provide 2-1/2" conduits from cabinet to flow meter through bottom of panel. conduits to be mounted on the wall of the can.



1/2" conduits to flow meter, relocate existing conduit on wall as necessary

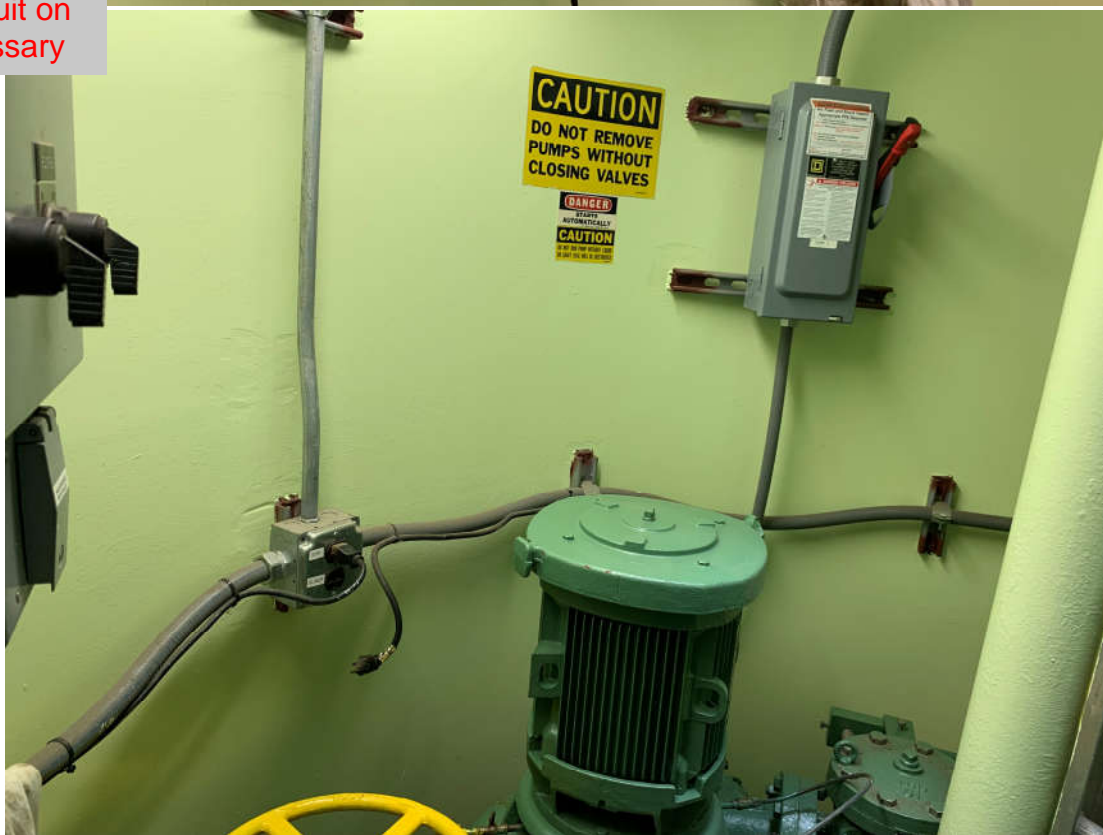


Photo 6 of 10

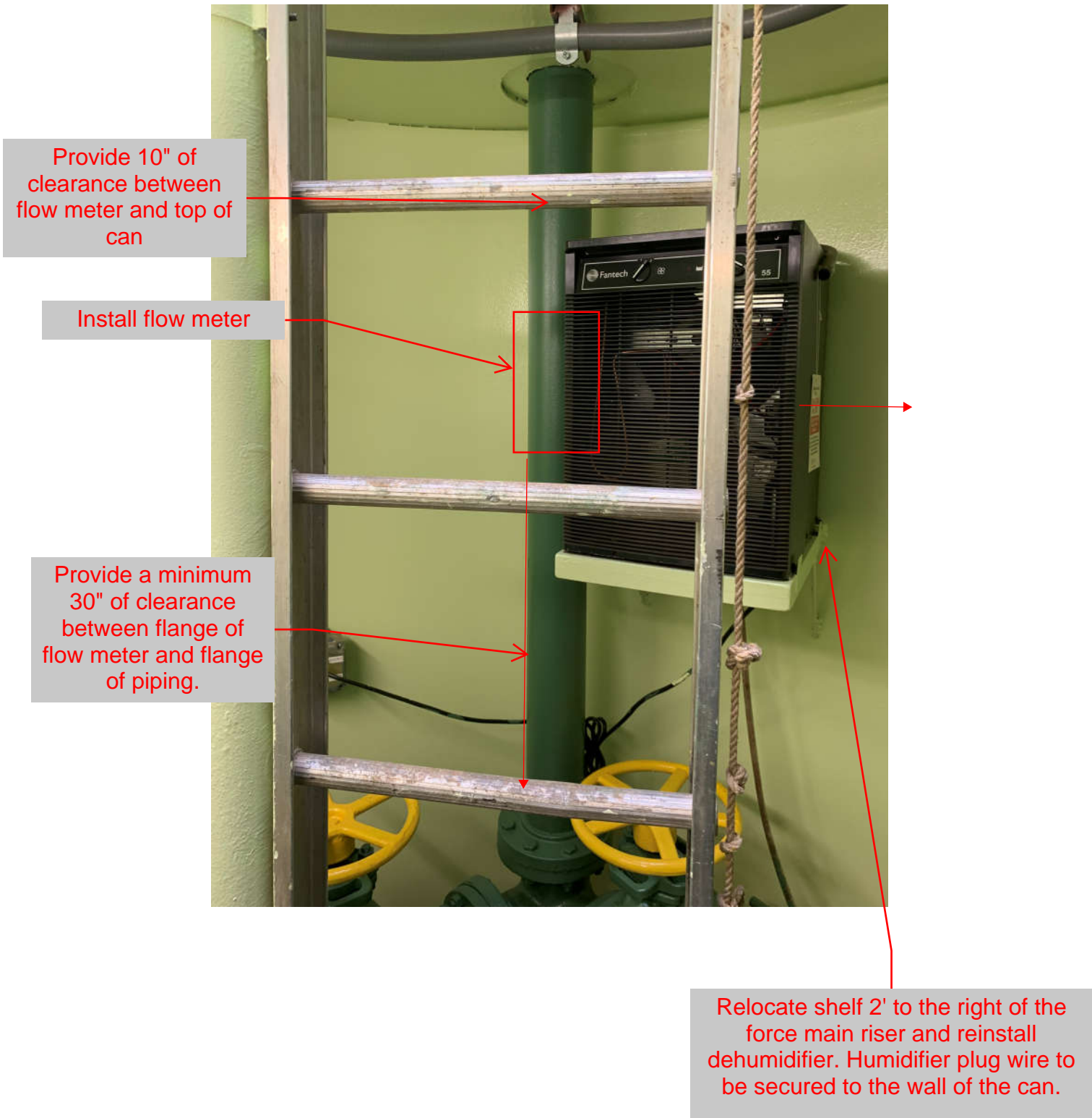
Photo 7 of 10



Photo 8 of 10



Photo 9 of 10



Provide 10" of clearance between flow meter and top of can

Install flow meter

Provide a minimum 30" of clearance between flange of flow meter and flange of piping.

Relocate shelf 2' to the right of the force main riser and reinstall dehumidifier. Humidifier plug wire to be secured to the wall of the can.