

NO.	DATE	DESCRIPTION
2014.11.03	CONSOLIDATED GMP FINAL	
2014.03.31	TOWER BID SET	
2014.02.12	50% TOWER GMP	
2013.12.20	50% CCT GMP PACKAGE	

A	C	E	G
B	D	F	H
INPUT		RACK OUTPUT	

DEFENSE AND PROSECUTION WELL

MOUNTED WITHIN LECTERN

FRONT PROSECUTION TABLE

REAR PROSECUTION TABLE

WITHIN FRONT PROSECUTION TABLE

WITHIN REAR PROSECUTION TABLE

FRONT DEFENSE TABLE

REAR DEFENSE TABLE

WITHIN FRONT DEFENSE TABLE

WITHIN REAR DEFENSE TABLE

SHEET APPLIES STRICTLY TO 1ST (TYPE A), 4TH THRU 8TH (TYPE C) AND 9TH FLOOR (TYPE D) COURT ROOMS

GENERAL NOTES:

- FLOW DIAGRAMS SHOWN ARE FOR REFERENCE ONLY TO SHOW THE DESIGN INTENT. NOT ALL SYSTEMS HAVE FLOW DIAGRAMS SHOWN. SYSTEM SHALL BE CONNECTED INCLUDING ALL EQUIPMENT AS REQUIRED TO ACCOMPLISH THE REQUIREMENTS OF 274000 SERIES SPECIFICATIONS.
- NOT ALL DEVICES SCHEDULED OR SHOWN IN DRAWINGS ARE SHOWN IN THE FLOW DIAGRAMS. REFER TO ENTIRE SET AND SPECIFICATIONS FOR ADDITIONAL DEVICES AND CONNECTION REQUIREMENTS.
- ONLY THE TYPICAL STANDARD COURTROOMS ARE SHOWN IN THIS SHEET. VARIOUS OTHER COURTROOMS IN BABCOX AND ON THE 1ST AND 8TH LEVEL HAVE DIFFERING DEVICES WITH SIMILAR DEVICE NUMBERING.

NETWORK HOMERUN DESIGNATION

- DATA CABLE ROUTED TO BUILDING NETWORK DATA
- LAN CABLE ROUTED TO A/V NETWORK SWITCH C00.12

CABLE LEGEND

- NETWORK DATA DTA DTA DTA STP CABLING STP STP
- CONTROL CABLING CTL CTL CTL FUTURE CONTROL CABLING CTL CTL CTL
- UTP CABLING UTP UTP UTP FUTURE UTP CABLING UTP UTP UTP
- VIDEO CABLING VID VID VID FUTURE VIDEO CABLING VID VID VID
- AUDIO CABLING AUD AUD AUD FUTURE AUDIO CABLING AUD AUD AUD

PROJECT
LAKE COUNTY
COURTHOUSE
EXPANSION

301 WASHINGTON STREET
 WAUKEGAN, ILLINOIS 60085

CLIENT

LAKE COUNTY
 18 N. COUNTY STREET
 WAUKEGAN, ILLINOIS
 847.377.2929 tel 847.984.5889 fax

ARCHITECT

AECOM
 303 EAST WACKER DRIVE,
 CHICAGO, IL 60601 312.373.7700 tel 312.938.1109 fax
 www.aecom.com

CONSULTANTS

STRUCTURAL
 AECOM
 999 TOWN AND COUNTRY ROAD
 ORANGE, CA 92668
 312.373.7700 tel 312.938.1109 fax
 www.aecom.com

MEP/FP
 SYSKA HENNESSY GROUP, INC.
 330 N. WABASH AVE.
 CHICAGO, IL 60601 SUITE 1505
 312.588.3561 tel 312.588.3579 fax
 www.syska.com

CODE/LIFE SAFETY
 ROLF JENSEN & ASSOCIATED, INC.
 600 WEST FULTON STREET
 CHICAGO, IL 60661
 312.879.7200 tel 312.879.7200 fax
 www.rjainc.com

CIVIL
 CHRISTOPHER B. BURKE, LTD.
 9575 W. HIGGINS ROAD
 ROSEMONT, IL 60018 SUITE 600
 847.823.0500 tel 847.823.0520 fax

LANDSCAPE
 AECOM
 303 EAST WACKER DRIVE,
 CHICAGO, IL 60601 SUITE 600
 312.373.7792 tel 312.373.7792 fax
 www.aecom.com

DATA TELCOM / AUDIO VISUAL
 AECOM
 800 LASALLE AVE
 MINNEAPOLIS, MN 55402 SUITE 400
 612.376.2169 tel 612.376.2169 fax
 www.aecom.com

ELECTRONIC SECURITY
 AECOM
 2950 PROFESSIONAL PLACE
 COLORADO SPRINGS, CO 80904 SUITE 201
 719.386.8309 tel 719.386.8339 fax
 www.aecom.com

FOOD SERVICE
 S1 FOOD SERVICE
 231 HOMEWOOD DRIVE
 BOLINGBROOK, IL 60440
 630.783.9232 tel
 http://s1foodservice.com/

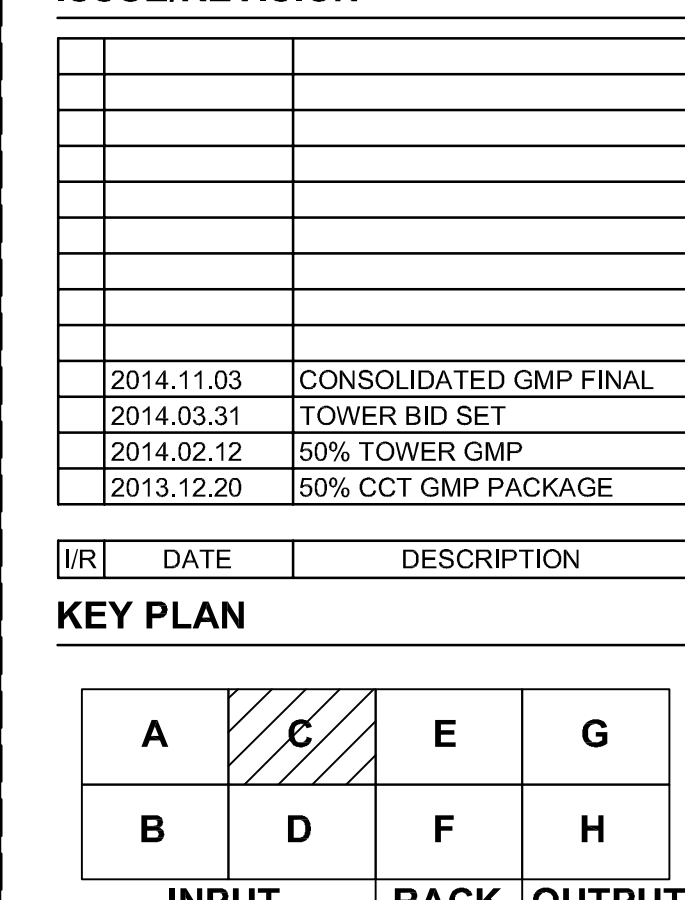
REGISTRATION

DATE	DESCRIPTION
2014.03.31	TOWER BID SET
2014.02.12	50% TOWER GMP
2013.12.20	50% CCT GMP PACKAGE

ISSUE/REVISION

NO.	DATE	DESCRIPTION

KEY PLAN



PROJECT NUMBER

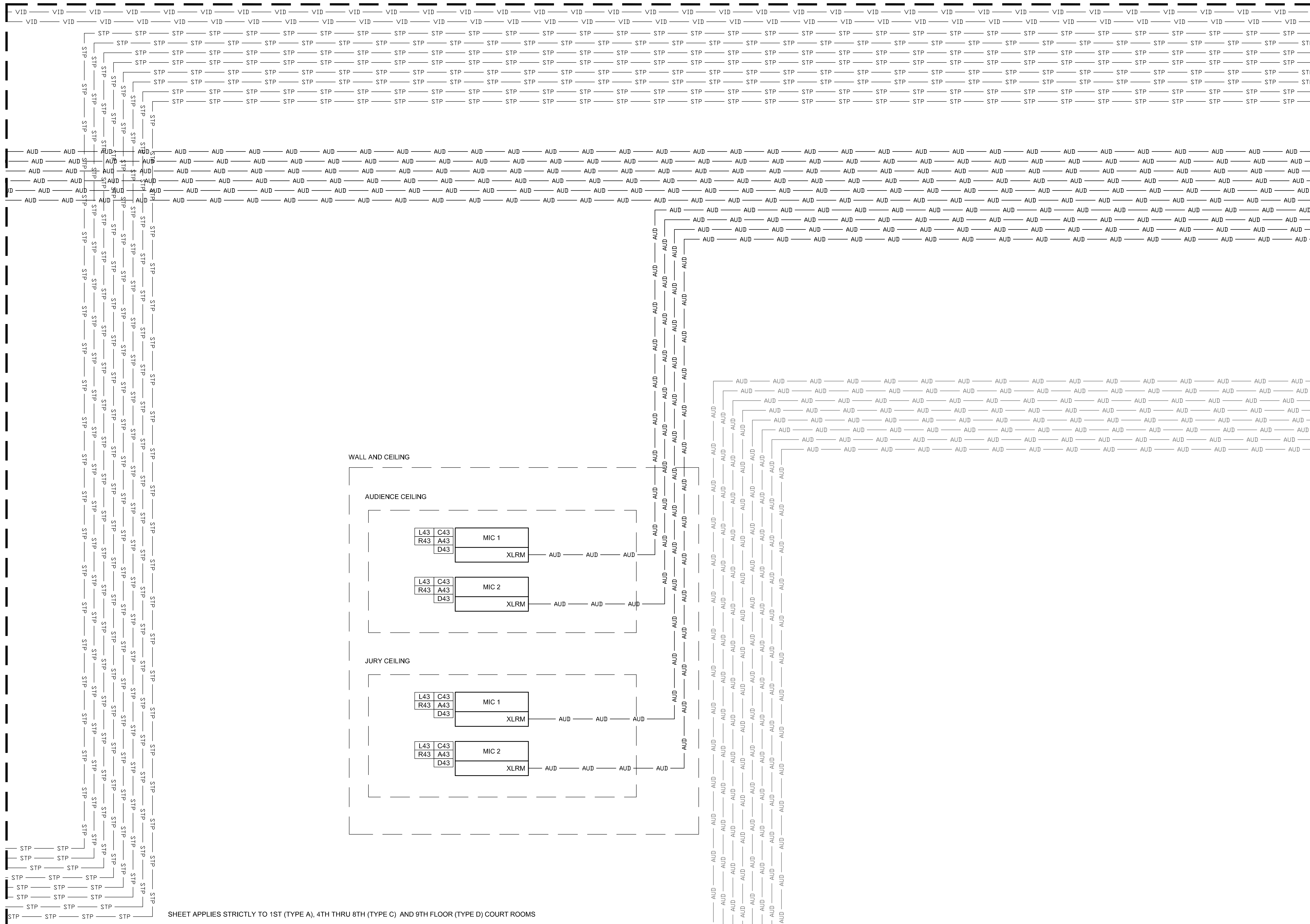
60288271

SHEET TITLE

AUDIO/VISUAL FLOW DIAGRAM -
 SYSTEM C - TYPICAL
 COURTROOM

SHEET NUMBER

2.TA603C



SHEET APPLIES STRICTLY TO 1ST (TYPE A), 4TH THRU 8TH (TYPE C) AND 9TH FLOOR (TYPE D) COURT ROOMS

GENERAL NOTES:

- A. FLOW DIAGRAMS SHOWN ARE FOR REFERENCE ONLY TO SHOW THE DESIGN INTENT. NOT ALL SYSTEMS HAVE FLOW DIAGRAMS SHOWN. SYSTEM SHALL BE CONNECTED INCLUDING ALL EQUIPMENT AS REQUIRED TO ACCOMPLISH THE REQUIREMENTS OF 274000 SERIES SPECIFICATIONS.
- B. NOT ALL DEVICES SCHEDULED OR SHOWN IN DRAWINGS ARE SHOWN IN THE FLOW DIAGRAMS. REFER TO ENTIRE SET AND SPECIFICATIONS FOR ADDITIONAL DEVICES AND CONNECTION REQUIREMENTS.
- C. ONLY THE TYPICAL STANDARD COURTROOMS ARE SHOWN IN THIS SHEET. VARIOUS OTHER COURTROOMS IN BABCOX AND ON THE 1ST AND 8TH LEVEL HAVE DIFFERING DEVICES WITH SIMILAR DEVICE NUMBERING.

NETWORK HOMERUN DESIGNATION

- DATA CABLE ROUTED TO BUILDING NETWORK DATA
- LAN CABLE ROUTED TO A/V NETWORK SWITCH C00.12

CABLE LEGEND

- NETWORK DATA: DTA CABLE
- CONTROL CABLING: CTL CABLE
- UTP CABLING: UTP CABLE
- VIDEO CABLING: VID CABLE
- AUDIO CABLING: AUD CABLE
- STP CABLING: STP CABLE
- FUTURE CONTROL CABLING: CTL CABLE
- FUTURE UTP CABLING: UTP CABLE
- FUTURE VIDEO CABLING: VID CABLE
- FUTURE AUDIO CABLING: AUD CABLE

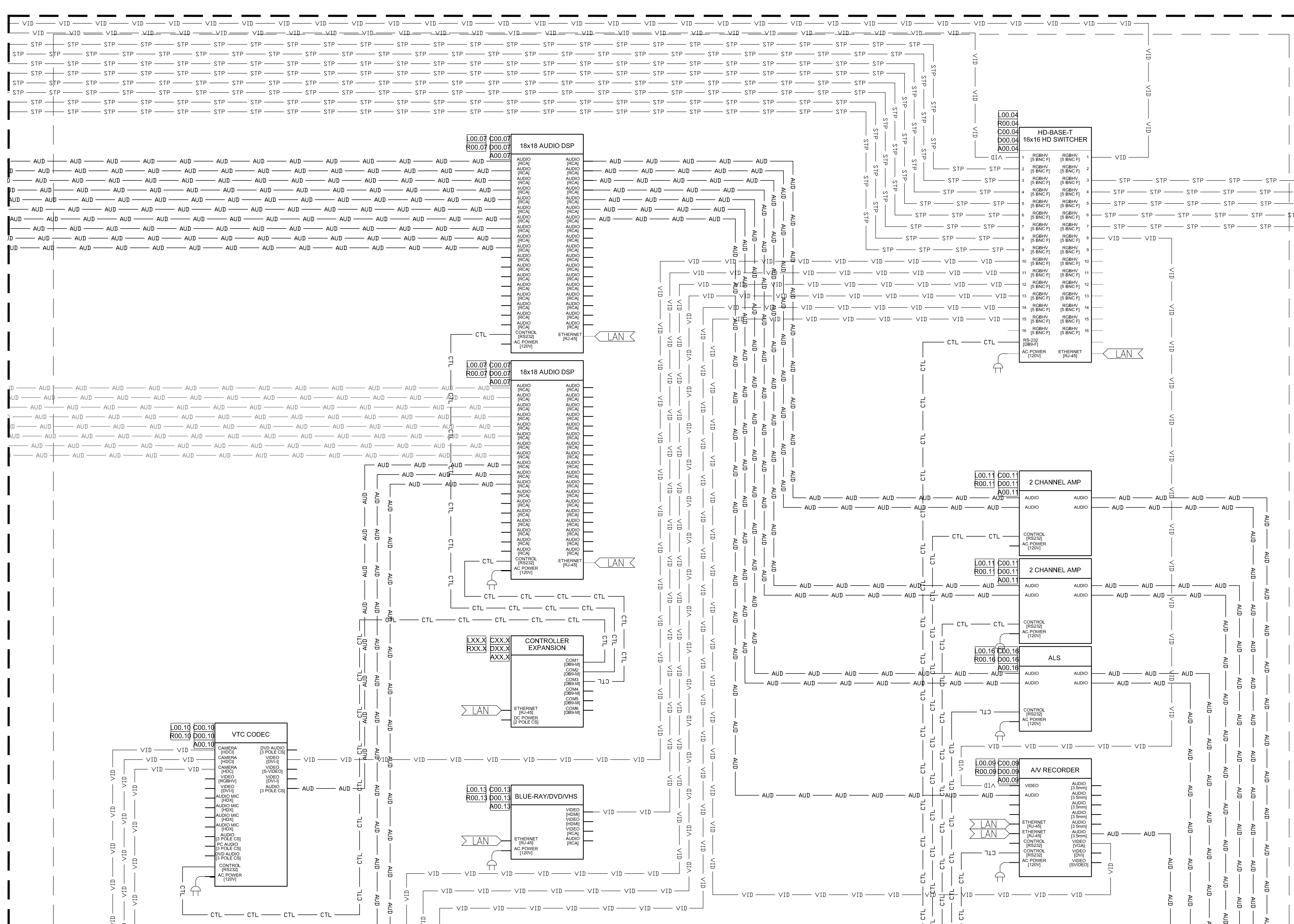
ARCH: E1 30" x 42" CHK: Appr: E D C B A
 Project Management Initials: 6 5 4 3 2 1
 Printed on 100% Post Consumer Recycled Content Paper

NO.	DATE	DESCRIPTION
2014.11.03		CONSOLIDATED GMP FINAL
2014.03.31		TOWER BID SET
2014.02.12		50% TOWER GMP
2013.12.20		50% CCT GMP PACKAGE

REV	DATE	DESCRIPTION

KEY PLAN

A	C	E	G
B	D	F	H
INPUT		RACK OUTPUT	



GENERAL NOTES:

- A. FLOW DIAGRAMS SHOWN ARE FOR REFERENCE ONLY TO SHOW THE DESIGN INTENT. NOT ALL SYSTEMS HAVE FLOW DIAGRAMS SHOWN. SYSTEM SHALL BE CONNECTED INCLUDING ALL EQUIPMENT AS REQUIRED TO ACCOMPLISH THE REQUIREMENTS OF 274000 SERIES SPECIFICATIONS.
- B. NOT ALL DEVICES SCHEDULED OR SHOWN IN DRAWINGS ARE SHOWN IN THE FLOW DIAGRAMS. REFER TO ENTIRE SET AND SPECIFICATIONS FOR ADDITIONAL DEVICES AND CONNECTION REQUIREMENTS.
- C. ONLY THE TYPICAL STANDARD COURTROOMS ARE SHOWN IN THIS SHEET. VARIOUS OTHER COURTROOMS IN BABCOX AND ON THE 1ST AND 8TH LEVEL HAVE DIFFERING DEVICES WITH SIMILAR DEVICE NUMBERING.

NETWORK HOMERUN DESIGNATION

- CABLE ROUTED TO BUILDING NETWORK DATA
- CABLE ROUTED TO A/V NETWORK SWITCH COO.12

CABLE LEGEND

- NETWORK DATA: DTA
- CONTROL CABLING: CTL
- UTP CABLING: UTP
- VIDEO CABLING: VID
- AUDIO CABLING: AUD
- STP CABLING: STP
- FUTURE CONTROL CABLING: CTL
- FUTURE UTP CABLING: UTP
- FUTURE VIDEO CABLING: VID
- FUTURE AUDIO CABLING: AUD

ARCH: E1 30" x 42"
 CHK:
 Project Management Initials:
 A
 B
 C
 D
 E
 F
 G
 H
 I
 J
 K
 L
 M
 N
 O
 P
 Q
 R
 S
 T
 U
 V
 W
 X
 Y
 Z
 AA
 AB
 AC
 AD
 AE
 AF
 AG
 AH
 AI
 AJ
 AK
 AL
 AM
 AN
 AO
 AP
 AQ
 AR
 AS
 AT
 AU
 AV
 AW
 AX
 AY
 AZ
 BA
 BB
 BC
 BD
 BE
 BF
 BG
 BH
 BI
 BJ
 BK
 BL
 BM
 BN
 BO
 BP
 BQ
 BR
 BS
 BT
 BU
 BV
 BW
 BX
 BY
 BZ
 CA
 CB
 CC
 CD
 CE
 CF
 CG
 CH
 CI
 CJ
 CK
 CL
 CM
 CN
 CO
 CP
 CQ
 CR
 CS
 CT
 CU
 CV
 CW
 CX
 CY
 CZ
 DA
 DB
 DC
 DD
 DE
 DF
 DG
 DH
 DI
 DJ
 DK
 DL
 DM
 DN
 DO
 DP
 DQ
 DR
 DS
 DT
 DU
 DV
 DW
 DX
 DY
 DZ
 EA
 EB
 EC
 ED
 EE
 EF
 EG
 EH
 EI
 EJ
 EK
 EL
 EM
 EN
 EO
 EP
 EQ
 ER
 ES
 ET
 EU
 EV
 EW
 EX
 EY
 EZ
 FA
 FB
 FC
 FD
 FE
 FF
 FG
 FH
 FI
 FJ
 FK
 FL
 FM
 FN
 FO
 FP
 FQ
 FR
 FS
 FT
 FU
 FV
 FW
 FX
 FY
 FZ
 GA
 GB
 GC
 GD
 GE
 GF
 GG
 GH
 GI
 GJ
 GK
 GL
 GM
 GN
 GO
 GP
 GQ
 GR
 GS
 GT
 GU
 GV
 GW
 GX
 GY
 GZ
 HA
 HB
 HC
 HD
 HE
 HF
 HG
 HH
 HI
 HJ
 HK
 HL
 HM
 HN
 HO
 HP
 HQ
 HR
 HS
 HT
 HU
 HV
 HW
 HX
 HY
 HZ
 IA
 IB
 IC
 ID
 IE
 IF
 IG
 IH
 II
 IJ
 IK
 IL
 IM
 IN
 IO
 IP
 IQ
 IR
 IS
 IT
 IU
 IV
 IW
 IX
 IY
 IZ
 JA
 JB
 JC
 JD
 JE
 JF
 JG
 JH
 JI
 JJ
 JK
 JL
 JM
 JN
 JO
 JP
 JQ
 JR
 JS
 JT
 JU
 JV
 JW
 JX
 JY
 JZ
 KA
 KB
 KC
 KD
 KE
 KF
 KG
 KH
 KI
 KJ
 KK
 KL
 KM
 KN
 KO
 KP
 KQ
 KR
 KS
 KT
 KU
 KV
 KW
 KX
 KY
 KZ
 LA
 LB
 LC
 LD
 LE
 LF
 LG
 LH
 LI
 LJ
 LK
 LL
 LM
 LN
 LO
 LP
 LQ
 LR
 LS
 LT
 LU
 LV
 LW
 LX
 LY
 LZ
 MA
 MB
 MC
 MD
 ME
 MF
 MG
 MH
 MI
 MJ
 MK
 ML
 MN
 MO
 MP
 MQ
 MR
 MS
 MT
 MU
 MV
 MW
 MX
 MY
 MZ
 NA
 NB
 NC
 ND
 NE
 NF
 NG
 NH
 NI
 NJ
 NK
 NL
 NM
 NO
 NP
 NQ
 NR
 NS
 NT
 NU
 NV
 NW
 NX
 NY
 NZ
 OA
 OB
 OC
 OD
 OE
 OF
 OG
 OH
 OI
 OJ
 OK
 OL
 OM
 ON
 OO
 OP
 OQ
 OR
 OS
 OT
 OU
 OV
 OW
 OX
 OY
 OZ
 PA
 PB
 PC
 PD
 PE
 PF
 PG
 PH
 PI
 PJ
 PK
 PL
 PM
 PN
 PO
 PP
 PQ
 PR
 PS
 PT
 PU
 PV
 PW
 PX
 PY
 PZ
 QA
 QB
 QC
 QD
 QE
 QF
 QG
 QH
 QI
 QJ
 QK
 QL
 QM
 QN
 QO
 QP
 QQ
 QR
 QS
 QT
 QU
 QV
 QW
 QX
 QY
 QZ
 RA
 RB
 RC
 RD
 RE
 RF
 RG
 RH
 RI
 RJ
 RK
 RL
 RM
 RN
 RO
 RP
 RQ
 RR
 RS
 RT
 RU
 RV
 RW
 RX
 RY
 RZ
 SA
 SB
 SC
 SD
 SE
 SF
 SG
 SH
 SI
 SJ
 SK
 SL
 SM
 SN
 SO
 SP
 SQ
 SR
 SS
 ST
 SU
 SV
 SW
 SX
 SY
 SZ
 TA
 TB
 TC
 TD
 TE
 TF
 TG
 TH
 TI
 TJ
 TK
 TL
 TM
 TN
 TO
 TP
 TQ
 TR
 TS
 TT
 TU
 TV
 TW
 TX
 TY
 TZ
 UA
 UB
 UC
 UD
 UE
 UF
 UG
 UH
 UI
 UJ
 UK
 UL
 UM
 UN
 UO
 UP
 UQ
 UR
 US
 UT
 UY
 UZ
 VA
 VB
 VC
 VD
 VE
 VF
 VG
 VH
 VI
 VJ
 VK
 VL
 VM
 VN
 VO
 VP
 VQ
 VR
 VS
 VT
 VU
 VV
 VW
 VX
 VY
 VZ
 WA
 WB
 WC
 WD
 WE
 WF
 WG
 WH
 WI
 WJ
 WK
 WL
 WM
 WN
 WO
 WP
 WQ
 WR
 WS
 WT
 WU
 WV
 WW
 WX
 WY
 WZ
 XA
 XB
 XC
 XD
 XE
 XF
 XG
 XH
 XI
 XJ
 XK
 XL
 XM
 XN
 XO
 XP
 XQ
 XR
 XS
 XT
 XU
 XV
 XW
 XX
 XY
 XZ
 YA
 YB
 YC
 YD
 YE
 YF
 YG
 YH
 YI
 YJ
 YK
 YL
 YM
 YN
 YO
 YP
 YQ
 YR
 YS
 YT
 YU
 YV
 YW
 YX
 YZ
 ZA
 ZB
 ZC
 ZD
 ZE
 ZF
 ZG
 ZH
 ZI
 ZJ
 ZK
 ZL
 ZM
 ZN
 ZO
 ZP
 ZQ
 ZR
 ZS
 ZT
 ZU
 ZV
 ZW
 ZX
 ZY
 ZZ

ARCH: E1 30" x 42"

Checker: Approved

Checker: Initials

D

C

B

A

Last Printed: 9/22/2015 2:10:16 PM
Filename: C:\Users\mccormack\Documents\LCCH_BABCOX_AV12_CENTRAL_Canada.rvt

Printed on: Post-Consumer Recycled Content Paper

TYPE "H" TERMINATION ID SCHEDULE (CABINETS)

Table with columns: ID#, DEVICE DESCRIPTION, MANUFACTURER, MODEL, PART NUMBER, MOUNTING TYPE, DETAIL, SPECIFIED DEVICE, BOX MOUNTING HEIGHT, JUNCTION BOX SIZE, WALL PLATE SIZE, CONDUIT SIZE, CONDUIT ROUTE, DATA DROPS, HEAT LOAD ACTIVE, HEAT LOAD STANDBY, POWER PEAK, POWER STANDBY, VOLTAGE AC, VOLTAGE DC, NOISE, WEIGHT PRODUCT, NOTES.

TYPE "X" TERMINATION ID SCHEDULE (BABCOX IN CUSTODY ARRANGMENT 1-2300)

Table with columns: ID#, DEVICE DESCRIPTION, MANUFACTURER, MODEL, PART NUMBER, MOUNTING TYPE, DETAIL, SPECIFIED DEVICE, BOX MOUNTING HEIGHT, JUNCTION BOX SIZE, WALL PLATE SIZE, CONDUIT SIZE, CONDUIT ROUTE, DATA DROPS, HEAT LOAD ACTIVE, HEAT LOAD STANDBY, POWER PEAK, POWER STANDBY, VOLTAGE AC, VOLTAGE DC, NOISE, WEIGHT PRODUCT, NOTES.

TYPE "Y" TERMINATION ID SCHEDULE (BABCOX EARLY DISPOSITION COURTROOM 1-2100)

Table with columns: ID#, DEVICE DESCRIPTION, MANUFACTURER, MODEL, PART NUMBER, MOUNTING TYPE, DETAIL, SPECIFIED DEVICE, BOX MOUNTING HEIGHT, JUNCTION BOX SIZE, WALL PLATE SIZE, CONDUIT SIZE, CONDUIT ROUTE, DATA DROPS, HEAT LOAD ACTIVE, HEAT LOAD STANDBY, POWER PEAK, POWER STANDBY, VOLTAGE AC, VOLTAGE DC, NOISE, WEIGHT PRODUCT, NOTES.

TYPE "F" TERMINATION ID SCHEDULE (JUDGES CHAMBERS)

Table with columns: ID#, DEVICE DESCRIPTION, MANUFACTURER, MODEL, PART NUMBER, MOUNTING TYPE, DETAIL, SPECIFIED DEVICE, BOX MOUNTING HEIGHT, JUNCTION BOX SIZE, WALL PLATE SIZE, CONDUIT SIZE, CONDUIT ROUTE, DATA DROPS, HEAT LOAD ACTIVE, HEAT LOAD STANDBY, POWER PEAK, POWER STANDBY, VOLTAGE AC, VOLTAGE DC, NOISE, WEIGHT PRODUCT, NOTES.



PROJECT
LAKE COUNTY
COURTHOUSE
EXPANSION

300 WASHINGTON STREET
WAUKEGAN, ILLINOIS 60085
CLIENT

LAKE COUNTY
18 N. COUNTY STREET
WAUKEGAN, ILLINOIS
847.377.2929 tel 847.984.5889 fax

ARCHITECT
AECOM SERVICES OF ILLINOIS, INC.
303 EAST WACKER DRIVE,
CHICAGO, IL 60601
312.373.7700 tel 312.938.1109 fax
www.aecom.com

CONSULTANTS
STRUCTURAL
AECOM
999 TOWN AND COUNTRY ROAD
ORANGE, CA 92668
312.373.7700 tel 312.938.1109 fax
www.aecom.com

MEP/FP
SYSKA HENNESSY GROUP, INC.
330 N. WABASH AVE.
CHICAGO, IL 60661
312.588.3561 tel 312.588.3579 fax
www.syska.com

CODE/LIFE SAFETY
ROLF JENSEN & ASSOCIATED, INC.
600 WEST FULTON STREET
CHICAGO, IL 60661
312.879.7200 tel 312.879.7200 fax
www.rjainc.com

CIVIL
CHRISTOPHER B. BURKE, LTD.
9575 W. HIGGINS ROAD
ROSEMONT, IL 60018 SUITE 600
847.823.0500 tel 847.823.0520 fax

LANDSCAPE
AECOM
303 EAST WACKER DRIVE,
CHICAGO, IL 60601 SUITE 600
312.373.7792 tel
www.aecom.com

DATA TELCOM / AUDIO VISUAL
AECOM
800 LASALLE AVE
MINNEAPOLIS, MN 55402 SUITE 400
612.376.2169 tel
www.aecom.com

ELECTRONIC SECURITY
AECOM
2590 PROFESSIONAL PLACE
COLORADO SPRINGS, CO 80904 SUITE 201
719.386.8309 tel 719.386.8339 fax
www.aecom.com

FOOD SERVICE
S1 FOOD SERVICE
231 HOMEWOOD DRIVE
BOLINGBROOK, IL 60440
630.783.9232 tel
http://s1foodservice.com/

REGISTRATION

ISSUE/REVISION

Table with columns: No., Description, Date, Issued By.

Table with columns: Date, Description.

PROJECT NUMBER

60288271

SHEET TITLE

AUDIO/VIDEO TERMINATION ID SCHEDULES

SHEET NUMBER

1.TA701

TERMINATION ID NOTES

1. SEE NOTES ON 2.700 SERIES DWGS.

NO.	DATE	DESCRIPTION
10-16-2015		FINAL ISSUED FOR CONSTRUCTION
2015.09.22		ISSUE FOR CONSTRUCTION
2014.11.03		CONSOLIDATED GMP FINAL
2014.03.31		TOWER BID SET
2014.02.12		50% TOWER GMP

TYPE "E" TERMINATION ID SCHEDULE (MOBILE EVIDENCE PRESENTATION CARTS, TYPICAL OF 10)

ID#	DEVICE DESCRIPTION	MANUFACTURER	MODEL	PART NUMBER	MOUNTING TYPE	DETAIL	SPECIFIED DEVICE	BOX MOUNTING HEIGHT	JUNCTION BOX SIZE	WALL PLATE SIZE	CONDUIT SIZE	CONDUIT ROUTE	DATA DROPS	HEAT LOAD ACTIVE	HEAT LOAD STANDBY	POWER PEAK	POWER STANDBY	VOLTAGE AC	VOLTAGE DC	NOISE	WEIGHT PRODUCT (LBS)	NOTES
E00	MOBILE EVIDENCE PRESENTATION CART	NOMAD	AS NEEDED	AS NEEDED	FLOOR		CTL-006	MILLWORK	3-GANG	3-GANG	N/A	N/A	3					120 V				NOTE 1.
E01	MEDIA AV MIXER	EXTRON	MPS 601 SERIES	60-1313-01	RACK		VID-017	NONE	NONE	NONE	N/A	N/A	2	69 Btu/h	15 Btu/h	22 VA	8 VA	120 V			7	
E02	BLU-RAY/DVD PLAYER	SONY	BDP-S6200	BDP-S6200	RACK SHELF		VID-010	NONE	NONE	NONE	N/A	N/A	1	85 Btu/h	10 Btu/h	25 VA	3 VA	120 V			8	
E03	RACK MOUNTED COMPUTER W/OVERLAY SOFTWARE	DELL	BY OWNER	BY OWNER	RACK			NONE	NONE	NONE	N/A	N/A	1	1023 Btu/h	171 Btu/h	300 VA	50 VA	120 V			40	
E05	15" DESKTOP TOUCHSCREEN CONTROLLER	CRESTRON	V15 SERIES	V15-TILT-B-DGE-1_PAK	MILLWORK		CTL-001	MILLWORK	1-GANG	1-GANG	3/4"	AV RACK	1	103 Btu/h	50 Btu/h	30 VA	15 VA	0 V	24 V		12	
E06	18" GOOSENECK FIXED MICROPHONE (ON/OFF & LED INDICATOR BASE)	CLOCK AUDIO	C35 SERIES WITH S-80S LATCH SWITCH	C-35/SR; S-80S	MILLWORK		AUD-003	MILLWORK	1-GANG	1-GANG	N/A	N/A	0	0 Btu/h	0 Btu/h	0 VA	0 VA	0 V	48 V		1	
E07	DIGITAL DOCUMENT CAMERA	WOLF-VISION	VZ-9PLUS (3)	VZ-9PLUS (3)	DESKTOP		VID-016	NONE	NONE	NONE	N/A	N/A	1			55 VA	5 VA	120 V			1	
E12	24-PORT ETHERNET NETWORK SWITCH	NETGEAR	PROSAFE GS724TPS	GS724TPS-100NAS	RACK		CTL-017	NONE	NONE	NONE	N/A	N/A	2	1996 Btu/h	1024 Btu/h	585 VA	300 VA	120 V	0 V	57	10	(DUAL) DUPLEX LC FIBER
E14	DIGITAL DOCUMENT CAMERA	WOLF-VISION	VZ-9PLUS (3)	VZ-9PLUS (3)	DESKTOP		VID-016	NONE	NONE	NONE	N/A	N/A	1			55 VA	5 VA	120 V			1	

TYPE "F" TERMINATION ID SCHEDULE (JUDGES CHAMBERS)

ID#	DEVICE DESCRIPTION	MANUFACTURER	MODEL	PART NUMBER	MOUNTING TYPE	DETAIL	SPECIFIED DEVICE	BOX MOUNTING HEIGHT	JUNCTION BOX SIZE	WALL PLATE SIZE	CONDUIT SIZE	CONDUIT ROUTE	DATA DROPS	HEAT LOAD ACTIVE	HEAT LOAD STANDBY	POWER PEAK	POWER STANDBY	VOLTAGE AC	VOLTAGE DC	NOISE	WEIGHT PRODUCT (LBS)	NOTES
F04	7" DESKTOP TOUCHSCREEN CONTROLLER	CRESTRON	TSW-750 SERIES	TSW-750	DESKTOP		CTL-001	DESKTOP	1-GANG	1-GANG	3/4"	AV RACK	1	103 Btu/h	50 Btu/h	30 VA	15 VA	0 V	24 V		12	PROVIDE DESKTOP MOUNT KIT
F05	CEILING SPEAKERS - 90 DEGREE, 40W SPEAKER	OSQ	ACOUSTICDESIGN 90 DEGREE	AUD-CIS2T	CEILING FLUSH	0.TA501/3	AUD-001	CEILING, FLUSH	MFR	NONE	3/4"	AV RACK	0					70 V				
F06	70W AUDIO AMPLIFIER(S) - 40W PLENUM RATED	EXTRON	MPA-401	60-845-01	ABOVE CEILING			CEILING	MFR	NONE	3/4"	F09	0			40 VA		120 V				
F09	52" LED LCD FLAT PANEL DISPLAY	SAMSUNG	ME-C SERIES	ME52C	WALL SURFACE	0.TA503/2	VID-004	SEE ELEVATIONS	3-GANG	2-GANG	1.25"	AV RACK	1	488 Btu/h	2 Btu/h	143 VA	1 VA	120 V	0 V	0	37	PROVIDE IPTV DECODER AT DISPLAY.

TYPE "G" TERMINATION ID SCHEDULE (JURY DELIBERATION ROOMS)

ID#	DEVICE DESCRIPTION	MANUFACTURER	MODEL	PART NUMBER	MOUNTING TYPE	DETAIL	SPECIFIED DEVICE	BOX MOUNTING HEIGHT	JUNCTION BOX SIZE	WALL PLATE SIZE	CONDUIT SIZE	CONDUIT ROUTE	DATA DROPS	HEAT LOAD ACTIVE	HEAT LOAD STANDBY	POWER PEAK	POWER STANDBY	VOLTAGE AC	VOLTAGE DC	NOISE	WEIGHT PRODUCT (LBS)	NOTES
G07	7" WALL MOUNTED TOUCHSCREEN CONTROLLER	CRESTRON	TSW-750 SERIES	TSW-750	WALL FLUSH		CTL-002	48" AFF	4-GANG	NONE	3/4"	AV RACK	1	44 Btu/h	20 Btu/h	18 VA	9 VA	48 V			1	
G09	65" LED LCD FLAT PANEL DISPLAY	SAMSUNG	ME-C SERIES	ME65C	WALL SURFACE	0.TA503/2	VID-006	SEE ELEVATIONS	3-GANG	2-GANG	1.25"	AV RACK	1	819 Btu/h	3 Btu/h	240 VA	1 VA	120 V	0 V	0	110	
G12	COMBINATION ELEC/TELECOM/AV FLOORBOX	N/A	N/A	N/A	FLOOR	0.TA502/4	CTL-014	FLOOR	3-GANG	3-GANG	(2) 1.25"	ACT CEILING	6	0 Btu/h	0 Btu/h			120 V				
G15	MOBILE EVIDENCE PRESENTATION CART PASS-THRU FLUSH PLATE	EXTRON	AS NEEDED	AS NEEDED	MILLWORK		CTL-015	22" AFF	2-GANG	1-GANG	1.25"	G09	3	0 Btu/h	0 Btu/h			120 V				

TYPE "H" TERMINATION ID SCHEDULE (IDF RACKS)

ID#	DEVICE DESCRIPTION	MANUFACTURER	MODEL	PART NUMBER	MOUNTING TYPE	DETAIL	SPECIFIED DEVICE	BOX MOUNTING HEIGHT	JUNCTION BOX SIZE	WALL PLATE SIZE	CONDUIT SIZE	CONDUIT ROUTE	DATA DROPS	HEAT LOAD ACTIVE	HEAT LOAD STANDBY	POWER PEAK	POWER STANDBY	VOLTAGE AC	VOLTAGE DC	NOISE	WEIGHT PRODUCT (LBS)	NOTES
H1.1	AV EQUIPMENT CABINET - SLIDE OUT AND ROTATING	MIDDLE ATLANTIC	WR SERIES - 44U	WR-44-42	RACK		CTL-009	NONE	NONE	NONE	N/A	N/A	1		0 Btu/h		0 VA	120 V				
H2.1	AV EQUIPMENT CABINET	MIDDLE ATLANTIC	WRK-SA SERIES - 44U	WRK-44SA-32LRD	RACK		CTL-008	NONE	NONE	NONE	N/A	N/A	1		0 Btu/h		0 VA	120 V				
H4.1	AV EQUIPMENT CABINET	MIDDLE ATLANTIC	WRK-SA SERIES - 44U	WRK-44SA-32LRD	RACK		CTL-008	NONE	NONE	NONE	N/A	N/A	1		0 Btu/h		0 VA	120 V				
H4.2	AV EQUIPMENT CABINET	MIDDLE ATLANTIC	WRK-SA SERIES - 44U	WRK-44SA-32LRD	RACK		CTL-008	NONE	NONE	NONE	N/A	N/A	1		0 Btu/h		0 VA	120 V				
H4V	VERTICAL CABLE MANAGEMENT	PANDUIT	SEE 27 SERIES SPECS	SEE SPEC	FLOOR		CTL-008	NONE	NONE	NONE	N/A	N/A										
H5.1	AV EQUIPMENT CABINET	MIDDLE ATLANTIC	WRK-SA SERIES - 44U	WRK-44SA-32LRD	RACK		CTL-008	NONE	NONE	NONE	N/A	N/A	1		0 Btu/h		0 VA	120 V				
H5.2	AV EQUIPMENT CABINET	MIDDLE ATLANTIC	WRK-SA SERIES - 44U	WRK-44SA-32LRD	RACK		CTL-008	NONE	NONE	NONE	N/A	N/A	1		0 Btu/h		0 VA	120 V				
H5V	VERTICAL CABLE MANAGEMENT	PANDUIT	SEE 27 SERIES SPECS	SEE SPEC	FLOOR		CTL-008	NONE	NONE	NONE	N/A	N/A										
H6.1	AV EQUIPMENT CABINET	MIDDLE ATLANTIC	WRK-SA SERIES - 44U	WRK-44SA-32LRD	RACK		CTL-008	NONE	NONE	NONE	N/A	N/A	1		0 Btu/h		0 VA	120 V				
H6.2	AV EQUIPMENT CABINET	MIDDLE ATLANTIC	WRK-SA SERIES - 44U	WRK-44SA-32LRD	RACK		CTL-008	NONE	NONE	NONE	N/A	N/A	1		0 Btu/h		0 VA	120 V				
H6V	VERTICAL CABLE MANAGEMENT	PANDUIT	SEE 27 SERIES SPECS	SEE SPEC	FLOOR		CTL-008	NONE	NONE	NONE	N/A	N/A										
H7.1	AV EQUIPMENT CABINET	MIDDLE ATLANTIC	WRK-SA SERIES - 44U	WRK-44SA-32LRD	RACK		CTL-008	NONE	NONE	NONE	N/A	N/A	1		0 Btu/h		0 VA	120 V				
H7.2	AV EQUIPMENT CABINET	MIDDLE ATLANTIC	WRK-SA SERIES - 44U	WRK-44SA-32LRD	RACK		CTL-008	NONE	NONE	NONE	N/A	N/A	1		0 Btu/h		0 VA	120 V				
H7V	VERTICAL CABLE MANAGEMENT	PANDUIT	SEE 27 SERIES SPECS	SEE SPEC	FLOOR		CTL-008	NONE	NONE	NONE	N/A	N/A										
H9.1	AV EQUIPMENT CABINET - SLIDE OUT AND ROTATING	MIDDLE ATLANTIC	WR SERIES - 44U	WR-44-42	RACK		CTL-009	NONE	NONE	NONE	N/A	N/A	1		0 Btu/h		0 VA	120 V				
H9.2	AV EQUIPMENT CABINET - SLIDE OUT AND ROTATING	MIDDLE ATLANTIC	WR SERIES - 44U	WR-44-42	RACK		CTL-009	NONE	NONE	NONE	N/A	N/A	1		0 Btu/h		0 VA	120 V				
HB1.1	AV EQUIPMENT CABINET	MIDDLE ATLANTIC	WRK-SA SERIES - 44U	WRK-44SA-32LRD	RACK		CTL-008	NONE	NONE	NONE	N/A	N/A	1		0 Btu/h		0 VA	120 V				NOTE 2.
HB1.2	AV EQUIPMENT CABINET	MIDDLE ATLANTIC	WRK-SA SERIES - 44U	WRK-44SA-32LRD	RACK		CTL-008	NONE	NONE	NONE	N/A	N/A	1		0 Btu/h		0 VA	120 V				

TYPE "I" TERMINATION ID SCHEDULE (IPTV SYSTEM)

ID#	DEVICE DESCRIPTION	MANUFACTURER	MODEL	PART NUMBER	MOUNTING TYPE	DETAIL	SPECIFIED DEVICE	BOX MOUNTING HEIGHT	JUNCTION BOX SIZE	WALL PLATE SIZE	CONDUIT SIZE	CONDUIT ROUTE	DATA DROPS	HEAT LOAD ACTIVE	HEAT LOAD STANDBY	POWER PEAK	POWER STANDBY	VOLTAGE AC	VOLTAGE DC	NOISE	WEIGHT PRODUCT (LBS)	NOTES
I00.01	POWER SEQUENCING PLUG STRIP	SENCORE	AS NEEDED	AS NEEDED	RACK		IPTV-001	NONE	NONE	NONE	N/A	N/A	0	79 Btu/h	79 Btu/h	23 VA	23 VA	120 V		0	7	
I01	COMCAST CABLE TELEVISION DECODER	SENCORE	AS NEEDED	AS NEEDED	RACK		IPTV-001	NONE	NONE	NONE	N/A	N/A	0	79 Btu/h	79 Btu/h	23 VA	23 VA	120 V		0	7	
I02	IPTV ENCODER CHASSIS	EXTERITY	AS NEEDED	AS NEEDED	RACK		IPTV-002	NONE	NONE	NONE	N/A	N/A	1	433 Btu/h	433 Btu/h	127 VA	127 VA	120 V		0	38	
I03	48-PORT ETHERNET NETWORK SWITCH	NETGEAR	PROSAFE GS748TPS	GS748TPS-100NAS	RACK		CTL-018	NONE	NONE	NONE	N/A	N/A	1	2047 Btu/h	1143 Btu/h	600 VA	335 VA	120 V	0 V	57	11	(DUAL) DUPLEX LC FIBER
I04	(F) VTC TELEPRESENCE HEADEND EQUIPMENT - VARIOUS	POLYCOM	FUTURE	FUTURE	RACK			NONE	NONE	NONE	N/A	N/A	2	1600 Btu/h	400 Btu/h	480 VA	120 VA	120 V	0 V			MEDIA MGR, CAPTURE SERVER, COLLAB SRVR
I05	AV RESOURCE MANAGEMENT SERVER	CRESTRON	AS NEEDED	AS NEEDED	RACK		CTL-020	NONE	NONE	NONE	N/A	N/A	2	4100 Btu/h	2891 Btu/h	1100 VA	750 VA	120 V	0 V	49	65	
I06	AV IOS/ANDROID SERVER	CRESTRON	AS NEEDED	AS NEEDED	RACK		CTL-020	NONE	NONE	NONE	N/A	N/A	2	4100 Btu/h	2891 Btu/h	1100 VA	750 VA	120 V	0 V	49	65	

TYPE "J" TERMINATION ID SCHEDULE (COURT INFORMATION DOCKET SYSTEM)

ID#	DEVICE DESCRIPTION	MANUFACTURER	MODEL	PART NUMBER	MOUNTING TYPE	DETAIL	SPECIFIED DEVICE	BOX MOUNTING HEIGHT	JUNCTION BOX SIZE	WALL PLATE SIZE	CONDUIT SIZE	CONDUIT ROUTE	DATA DROPS	HEAT LOAD ACTIVE	HEAT LOAD STANDBY	POWER PEAK	POWER STANDBY	VOLTAGE AC	VOLTAGE DC	NOISE	WEIGHT PRODUCT (LBS)	NOTES
J01	65" LED LCD FLAT PANEL DISPLAY - COURT INFORMATION																					

ARCH: E1 30" x 42"
 Checker: Approved
 Project Management Initials:
 Lisa Phillips: 9/22/2015 3:24:56 PM
 Pathname: C:\Users\lphillips\Documents\LOCH_TOWER_AV12_CENTRAL_caracas.rvt
 Printed on: % Post-Consumer Recycled Content Paper

TYPE "L" TERMINATION ID SCHEDULE (STANDARD LEFT COURTS)

ID#	DEVICE DESCRIPTION	MANUFACTURER	MODEL	PART NUMBER	MOUNTING TYPE	DETAIL	SPECIFIED DEVICE	BOX MOUNTING HEIGHT	JUNCTION BOX SIZE	WALL PLATE SIZE	CONDUIT SIZE	CONDUIT ROUTE	DATA DROPS	HEAT LOAD ACTIVE	HEAT LOAD STANDBY	POWER PEAK	POWER STANDBY	VOLTAGE AC	VOLTAGE DC	NOISE	WEIGHT PRODUCT (LBS)	NOTES	
L00.01	POWER SEQUENCING PLUG STRIP	APC	L21-20R INPUT 0RU	AP7960	RACK		CTL-013	NONE	NONE	NONE	NONE	N/A	1		0 Btu/h	0 VA	0 VA	208 V					
L00.02	AUDIOVISUAL CONTROL SYSTEM HARDWARE	CRESTRON	AS NEEDED	AS NEEDED	RACK		CTL-003	NONE	NONE	NONE	N/A	N/A	1	37 Btu/h	37 Btu/h	11 VA	11 VA	0 V	12 V		5		
L00.03	RACK MOUNTED COMPUTER W/OVERLAY SOFTWARE	DELL	BY OWNER	BY OWNER	RACK			NONE	NONE	NONE	NONE	N/A	1	1023 Btu/h	171 Btu/h	300 VA	50 VA	120 V			40		
L00.04	AV INTEGRATED HDBASE-T VIDEO/AUDIO SWITCHER	EXTRON	XTP SERIES	AS NEEDED	RACK		VID-008	NONE	NONE	NONE	NONE	N/A	2	2764 Btu/h	341 Btu/h	810 VA	100 VA	120 V			39		
L00.06	IPTV DECODER	EXTERITY	AS NEEDED	AS NEEDED	WALL SURFACE			SEE ELEVATIONS	3-GANG	2-GANG	1"	AV RACK	1		0 Btu/h	50 VA	10 VA	120 V					
L00.07	AUDIO AVB DIGITAL SIGNAL PROCESSOR	BIAMP	TESIRA AVB DSP	AS NEEDED	RACK		AUD-005	NONE	NONE	NONE	N/A	N/A	2	512 Btu/h	171 Btu/h	150 VA	50 VA	120 V			18		
L00.09	(F) COURTROOM AUDIO RECORDER	FTR	GOLD SERIES	FUTURE	RACK		AUD-007	NONE	NONE	NONE	N/A	N/A	2	116 Btu/h	10 Btu/h	34 VA	3 VA	120 V	0 V		11		
L00.10	(F) VIDEO TELECONFERENCING CODEC	POLYCOM	HDX 9000	FUTURE	RACK		VTC-002	NONE	NONE	NONE	N/A	N/A	2	645 Btu/h	102 Btu/h	189 VA	30 VA	120 V	0 V		20		
L00.11	70V AUDIO AMPLIFIER(S) - 300W PER CHANNEL - 4 CHANNEL	CROWN	DRIVE CORE AMPS	DCI 4300	RACK		AUD-009	NONE	NONE	NONE	NONE	N/A	1	530 Btu/h	407 Btu/h	564 VA	120 VA	120 V	0 V		20		
L00.12	48-PORT ETHERNET NETWORK SWITCH	NETGEAR	PROSAFE GS748TSP	GS748TSP-100NAS	RACK		CTL-018	NONE	NONE	NONE	N/A	N/A	1	2047 Btu/h	1143 Btu/h	600 VA	335 VA	120 V	0 V	57	11	(DUAL) DUPLEX LC FIBER	
L00.13	BLU-RAY/DVD PLAYER	SONY	BDP-S6200	BDP-S6200	RACK SHELF		VID-010	NONE	NONE	NONE	NONE	N/A	1	85 Btu/h	10 Btu/h	25 VA	3 VA	120 V			8		
L00.16	ASSISTIVE LISTENING TRANSMITTER	WILLIAMS SOUND	WIR-SYS-7518	WIR-MOD-232	RACK		AUD-006	NONE	NONE	NONE	NONE	N/A	1		0 Btu/h	0 VA	0 VA	120 V					
L00.17	12/24V POWER SUPPLY	ALTRONIX	R1224DC16CB	R1224DC16CB	RACK		CTL-019	NONE	NONE	NONE	N/A	N/A	1	332 Btu/h	100 Btu/h	720 VA	200 VA	120 V	24 V		16		
L00.19	DVD/VHS PLAYER	MAGNAVOX	DV225MG9	DV225MG9	RACK		VID-011	NONE	NONE	NONE	NONE	N/A	0		0 Btu/h	100 VA	0 VA	120 V		0	6		
L01	164" MOTORIZED TENSIONED 16:10 PROJECTION SCREEN	DA-LITE	TENSIONED ADVANTAGE ELECTROL	34614	CEILING FLUSH	0.TA504	VID-001	CEILING	2-GANG	2-GANG	1"	AV RACK	0	983 Btu/h	0 Btu/h	288 VA	0 VA	120 V		0	203		
L02	CEILING SPEAKERS - 90 DEGREE, 40W SPEAKER	QSC	ACOUSTICDESIGN 90 DEGREE	AD-CI52T	CEILING FLUSH	0.TA501/3	AUD-001	CEILING,FLUSH	MFR	NONE	3/4"	AV RACK	0	130 Btu/h	0 Btu/h	40 VA	0 VA	70 V		0	8		
L03	CEILING PROJECTOR - 8500 LUMEN 2.3-3.6X THROW - ZOOM LENS	PANASONIC	PT-DZ SERIES	PT-DZ870ULW	CEILING FLUSH	0.TA505/1	VID-002	CEILING	3-GANG	2-GANG	1.25"	AV RACK	1	3514 Btu/h	500 Btu/h	1030 VA	172 VA	120 V			39		
L03.01	MOTORIZED PROJECTOR LIFT - WHITE COLORED	DRAPER	AEROLIFT 150		CEILING FLUSH	0.TA505/1	CTL-022	CEILING,FLUSH	MFR	3-GANG	1.25"	ACT CEILING	1					120 V	0 V				
L04	15" DESKTOP TOUCHSCREEN CONTROLLER	CRESTRON	V15 SERIES	V15-TILT-B-DGE-1_PAK	DESKTOP		CTL-001	DESKTOP	1-GANG	1-GANG	3/4"	AV RACK	1	103 Btu/h	50 Btu/h	30 VA	15 VA	0 V	24 V		12		
L04.01	15" DESKTOP TOUCHSCREEN CONTROLLER (SECONDARY INPUT LOCATION)	N/A	N/A	N/A	DESKTOP		CTL-001	DESKTOP	1-GANG	1-GANG	3/4"	AV RACK	1	103 Btu/h	50 Btu/h	30 VA	15 VA	0 V	24 V		12		
L06	18" GOOSENECK TABLE MICROPHONE (ON/OFF & LED INDICATOR BASE)	CLOCK AUDIO	C35 SERIES WITH S-80S LATCH SWITCH	C-35/SR; S-80S	DESKTOP		AUD-003	TABLE	1-GANG	1-GANG	N/A	N/A	0	0 Btu/h	0 Btu/h	0 VA	0 VA	0 V	48 V				
L07	MICROPHONE SEMI-RECESSED IN JURY MILLWORK - HALF CARDIOID	CLOCK AUDIO	CS-1SN-RF	CS-1SN-RF	MILLWORK		AUD-003	FLOOR	1-GANG	1-GANG	1"	AV RACK	0	0 Btu/h	0 Btu/h	0 VA	0 VA	0 V	48 V			ROUTE UP TO TOP OF HALF-HEIGHT WALL	
L08	(F) 23" FLAT PANEL JUROR DISPLAY ON ARTICULATING ARM	FUTURE	FUTURE	FUTURE	WALL SURFACE			FLOOR	2-GANG	1-GANG	1"	AV RACK	1		0 Btu/h	0 Btu/h	0 VA	120 V					
L09	52" LED LCD FLAT PANEL DISPLAY - VIDEO WITNESS	SAMSUNG	ME-C SERIES	ME52C	WALL SURFACE		VID-004	SEE ELEVATIONS	3-GANG	2-GANG	1.25"	AV RACK	1	488 Btu/h	2 Btu/h	143 VA	1 VA	120 V	0 V	0	37		
L09.01	FLAT PANEL DISPLAY ARTICULATING ARM (25" EXTENSION)	CHIEF	THINSTALL LARGE SERIES	TSS25T	WALL SURFACE		VID-004	NONE	NONE	NONE	N/A	N/A	0	0 Btu/h	0 Btu/h	0 VA	0 VA	0 V	0 V				
L11	ASSISTED LISTENING IR RADIATOR	WILLIAMS SOUND	WIR-TX-75	WIR-TX-75	WALL SURFACE		AUD-006	120" AFF	2-GANG	1-GANG	1"	AV RACK	1			19 VA	1 VA	0 V	48 V		1		
L12	COMBINATION ELEC/TELECOM/AV FLOORBOX	N/A	N/A	N/A	FLOOR	0.TA502/4	CTL-014	FLOOR	3-GANG	3-GANG	(2) 1.25"	ACT CEILING	6	0 Btu/h	0 Btu/h	0 VA	0 VA	120 V					
L14	MEDIA INTERFACE W/HDMI,VGA,3.5mm AUDIO,(2) MIC XLR	EXTRON	CABLE CUBBY 700 SERIES	70-1046-08	MILLWORK		CTL-010	NONE	NONE	NONE	N/A	N/A	2	0 Btu/h	0 Btu/h	0 VA	0 VA	120 V			7		
L15	MOBILE EVIDENCE PRESENTATION CART PASS-THRU FLUSH PLATE	EXTRON	AS NEEDED	AS NEEDED	MILLWORK	0.TA501	CTL-015	22" AFF	2-GANG	1-GANG	N/A	N/A	3	0 Btu/h	0 Btu/h	0 VA	0 VA	120 V					
L16	ASSISTIVE LISTENING CHARGER	WILLIAMS SOUND	WIR-SYS-7518	CHG-518	DESKTOP		AUD-006	18" AFF	2-GANG	1-GANG	1"	AV RACK	0			100 VA	10 VA	120 V	0 V		11		
L18	(F) PRESS INPUT/OUTPUT WALLPLATE	FUTURE	FUTURE	FUTURE	WALL FLUSH			18" AFF	4-GANG	3-GANG	(3) 1.25"	AV RACK	0	0 Btu/h	0 Btu/h	0 VA	0 VA	120 V					
L28	(F) VIDEO DISTRIBUTION AMPLIFIER	FUTURE	FUTURE	FUTURE	FLOOR				NONE	NONE	N/A	N/A						120 V					
L37	HDBASE-T SCALING RECEIVER	EXTRON	XTP-SR-HDMI	60-1199-01	WALL SURFACE		VID-012	SEE ELEVATIONS	1-GANG	1-GANG	1"	AV RACK	0	41 Btu/h	34 Btu/h	12 VA	10 VA	0 V	12 V		2		
L40	(F) VIDEO TELECONFERENCING CAMERA - JUDGE	POLYCOM	FUTURE	FUTURE	WALL FLUSH	0.TA502/1	VID-014	SEE ELEVATIONS	MFR	2-GANG	1"	AV RACK	1	82 Btu/h	0 Btu/h	24 VA	0 VA	120 V	12 V		12		
L41	(F) VIDEO TELECONFERENCING CAMERA - WITNESS	POLYCOM	FUTURE	FUTURE	WALL FLUSH	0.TA502/1	VID-014	SEE ELEVATIONS	MFR	2-GANG	1"	AV RACK	1	82 Btu/h	0 Btu/h	24 VA	0 VA	120 V	12 V		12		
L42	(F) VIDEO TELECONFERENCING CAMERA - ATTORNEY	POLYCOM	FUTURE	FUTURE	WALL FLUSH	0.TA502/1	VID-014	SEE ELEVATIONS	MFR	2-GANG	1"	AV RACK	1					120 V					
L44	52" LED LCD FLAT PANEL DISPLAY	SAMSUNG	ME-C SERIES	ME52C	WALL SURFACE	0.TA503/2	VID-004	SEE ELEVATIONS	3-GANG	2-GANG	1.25"	AV RACK	1	488 Btu/h	2 Btu/h	143 VA	1 VA	120 V	0 V	0	37		
L45	TOUCHSCREEN DESKTOP INTERACTIVE DISPLAY ANNOTATOR	SMART TECH	SMART PODIUM	SP524-SMP	DESKTOP		VID-013	DESKTOP	2-GANG	1-GANG	1"	AV RACK	1			60 VA	5 VA	120 V			19	MOUNTED SIMILAR TO DETAIL LISTED	
L46	RECESSED VOLUME CONTROLLED SPEAKER WITH 3.5MM JACK	VALCOM	DESKTOP SPEAKER	V-763	DESKTOP		AUD-008	MILLWORK	2-GANG	1-GANG	1.25"	AV RACK	1					-24 V		1			
L47	LIGHTING CONTROLS RS232 INTERFACE	CRESTRON	AS NEEDED	AS NEEDED	ABOVE CEILING		CTL-003	CEILING	2-GANG	2-GANG	1"	AV RACK	1										
L49	AUDIO 4-PORT POE AVB ENCODER	BIAMP	TESIRA	EX-IN	ABOVE CEILING		AUD-010	NONE	NONE	NONE	N/A	N/A	1										
L52	MICROPHONE SEMI-RECESSED IN BENCH MILLWORK - CARDIOID	CLOCK AUDIO	C-012EN-RF	C-012EN-RF	MILLWORK		AUD-003	MILLWORK	1-GANG	1-GANG	1"	AV RACK	0	0 Btu/h	0 Btu/h	0 VA	0 VA	0 V	48 V				
L54	MOTORIZED SHADE CONTROL INTERFACE	CRESTRON	AS NEEDED	AS NEEDED	ABOVE CEILING		CTL-003	CEILING	2-GANG	2-GANG	1"	AV RACK	1										
L55	VIDEOCONFERENCING CART INPUT WALLPLATE	EXTRON	AS NEEDED	AS NEEDED	MILLWORK		CTL-023	SEE ELEVATIONS	2-GANG	1-GANG	1"	AV RACK	1	0 Btu/h	0 Btu/h			120 V					

TYPE "P" TERMINATION ID SCHEDULE (MEDIA ROOM DISPLAYS)

ID#	DEVICE DESCRIPTION	MANUFACTURER	MODEL	PART NUMBER	MOUNTING TYPE	DETAIL	SPECIFIED DEVICE	BOX MOUNTING HEIGHT	JUNCTION BOX SIZE	WALL PLATE SIZE	CONDUIT SIZE	CONDUIT ROUTE	DATA DROPS	HEAT LOAD ACTIVE	HEAT LOAD STANDBY	POWER PEAK	POWER STANDBY	VOLTAGE AC	VOLTAGE DC	NOISE	WEIGHT PRODUCT (LBS)	NOTES	
P01	(F) 40" PRESS ROOM DISPLAY	FUTURE	FUTURE	FUTURE	WALL SURFACE	2.TA308	VID-005	SEE ELEVATIONS	2-GANG	1-GANG	1.25"	P02	1		0 Btu/h	0 VA	0 VA	120 V					
P02	(F) PRESS INPUT/OUTPUT WALLPLATE	FUTURE	FUTURE	FUTURE	WALL FLUSH		CTL-021	18" AFF	4-GANG	3-GANG	(3) 1.25"	AV RACK	0	0 Btu/h	0 Btu/h	0 VA	0 VA	120 V		0			
P04	(F) PRESS VIDEO SWITCHING EQUIPMENT	FUTURE	FUTURE	FUTURE	RACK			NONE	NONE	NONE	N/A	N/A	2	1600 Btu/h	400 Btu/h	480 VA	120 VA	120 V	0 V				

TYPE "R" TERMINATION ID SCHEDULE (STANDARD RIGHT COURTS)

ID#	DEVICE DESCRIPTION	MANUFACTURER	MODEL	PART NUMBER	MOUNTING TYPE	DETAIL	SPECIFIED DEVICE	BOX MOUNTING HEIGHT	JUNCTION BOX SIZE	WALL PLATE SIZE	CONDUIT SIZE	CONDUIT ROUTE	DATA DROPS	HEAT LOAD ACTIVE	HEAT LOAD STANDBY	POWER PEAK	POWER STANDBY	VOLTAGE AC	VOLTAGE DC	NOISE	WEIGHT PRODUCT (LBS)	NOTES	
R00.01	POWER SEQUENCING PLUG STRIP	APC	L21-20R INPUT 0RU	AP7960	RACK		CTL-013	NONE	NONE	NONE	NONE	N/A	1		0 Btu/h	0 VA	0 VA	208 V					
R00.02	AUDIOVISUAL CONTROL SYSTEM HARDWARE	CRESTRON	AS NEEDED	AS NEEDED	RACK		CTL-003	NONE	NONE	NONE	N/A	N/A	1	37 Btu/h	37 Btu/h	11 VA	11 VA	0 V	12 V		5		
R00.03	RACK MOUNTED COMPUTER W/OVERLAY SOFTWARE	DELL	BY OWNER	BY OWNER	RACK			NONE	NONE	NONE	NONE	N/A	1	1023 Btu/h	171 Btu/h	300 VA	50 VA	120 V			40		
R00.04	AV INTEGRATED HDBASE-T VIDEO/AUDIO SWITCHER	EXTRON	XTP SERIES	AS NEEDED	RACK		VID-008	NONE	NONE	NONE	NONE	N/A	2	2764 Btu/h	341 Btu/h	810 VA	100 VA	120 V			39		
R00.06	IPTV DECODER	EXTERITY	AS NEEDED	AS NEEDED	WALL SURFACE		IPTV-003	SEE ELEVATIONS	3-GANG	2-GANG	1"	AV RACK	1		0 Btu/h	50 VA	10 VA	120 V					
R00.07	AUDIO AVB DIGITAL SIGNAL PROCESSOR	BIAMP	TESIRA AVB DSP	AS NEEDED	RACK		AUD-005	NONE	NONE	NONE	N/A	N/A	2	512 Btu/h	171 Btu/h	150 VA	50 VA	120 V			18		
R00.09	(F) COURTROOM AUDIO RECORDER	FTR	GOLD SERIES	FUTURE	RACK		AUD-007	NONE	NONE	NONE	N/A	N/A	2	116 Btu/h	10 Btu/h	34 VA	3 VA	120 V	0 V		11		
R00.10	(F) VIDEO TELECONFERENCING CODEC	POLYCOM	HDX 9000	FUTURE	RACK		VTC-002	NONE	NONE	NONE	N/A	N/A	2	645 Btu/h	102 Btu/h	189 VA	30 VA	120 V	0 V				